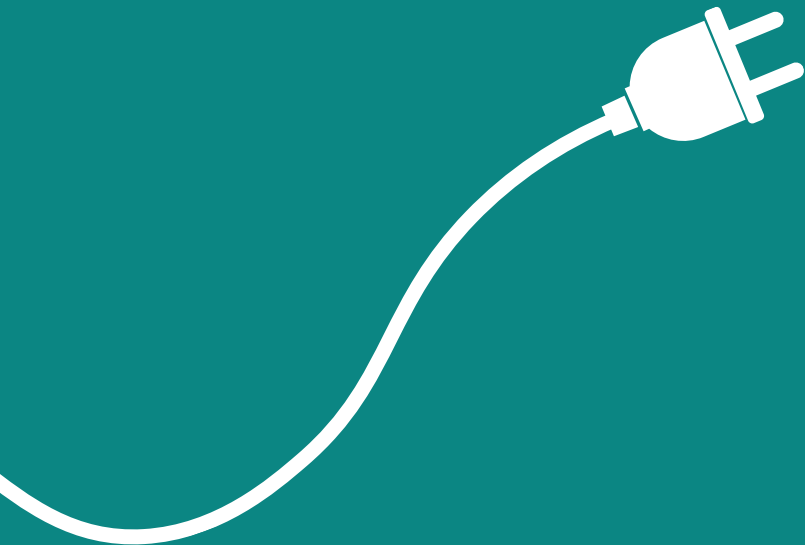
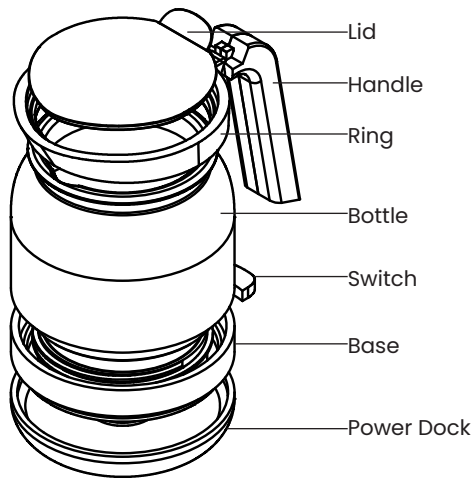


Manual



Kettle



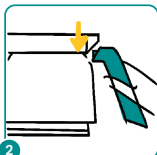
Need a better size?

How to replace the bottle



1

Counterclockwise. Take off.



2

Take the handle off.



3

Take the ring off.



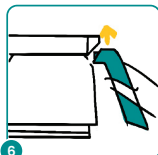
4

Get the bottle.



5

Put the ring on.



6

Put the handle on.



7

Clockwise. Recover. Done.



Watch it online

Looks dirty? Takes long to boil?

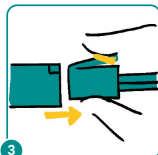
How to remove limescale



1
Counterclockwise. Take off.



2
Take the heating board off.



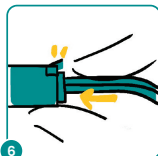
3
Plug the wire out.



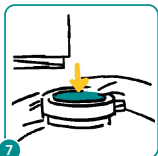
4
Use something clean it.



5
Make it dry.



6
Plug the wire in. Click.



7
Put the heating board on.



8
Clockwise. Recover. Done.



Watch it online

Power is cut off?

How to replace the wire



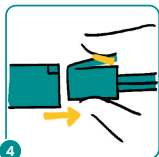
1 Counterclockwise. Take off.



2 Counterclockwise. Take off.



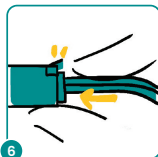
3 Counterclockwise. Take off.



4 Plug the wire out.



5 Counterclockwise. Take off.



6 Plug the wire in. Click.



7 Counterclockwise. Take off.



8 Clockwise. Recover. Done.



Watch it online

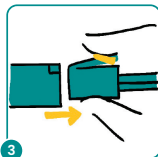
Less responsive? Doesn't it auto-turn off?
How to replace the switch



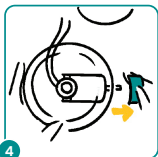
1
Counterclockwise. Take off.



2
Take the heating board off.



3
Plug the wire out.



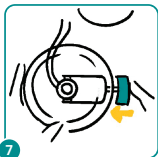
4
Take the switch off.



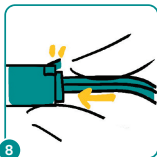
5
Take it off.



6
Put a functioning one back.



7
Put the switch on.



8
Plug the wire in. Click.



9
Clockwise. Recover. Done.



Watch it online

Try something new?

The product allows for customized accessories and upgradeable parts. For more details, please see our website. ↘



zurara.in