

Atlas of
BORNHOLM



Anna Ohmsen

This mapping atlas zooms in on Bornholm and creates an insight into a more specific place in Sandvig. The mapping process becomes a focal point for finding out where the seaweed production facility is to be located. From understanding the water quality to examining smaller details and surroundings, a zoomed-in atlas is compiled. Through a palimpsest approach, the observations will underline different layers of the place.

The Baltic Sea	
Algea blossom	5
The idea of a cultivated landscape	6
Wind farms	7
Water condition	8
Growing seaweed	9
Bornholm	
Existing smokeries	11
Facilities	12
Nautical chart	12
Positioning	12
A palimpsest exploration	
Location	16
Water	17
Surroundings	19
Infrastructure	21
01 Site	23
02 Site	25
03 Site	27
04 Site	29
Research	
Serial Vision, site	31
Interview, municipality	33
Coastal Path	35
Coastal Directorate	36

Every summer, colourful blooms of phytoplankton can be observed in the shallow water of the Baltic Sea. They have intensified as a result of increased nutrient runoff from land around the sea (mainly because of agricultural fertilisers and sewage).

Algal Harmful Blooms are also one of the issues that affect the Baltic Sea. Biodiversity loss, climate change, eutrophication, overfishing, plastic waste, are other examples of environmental problems that impact the health of the Baltic Sea.

www.copernicus.eu, Europe's eyes on Earth



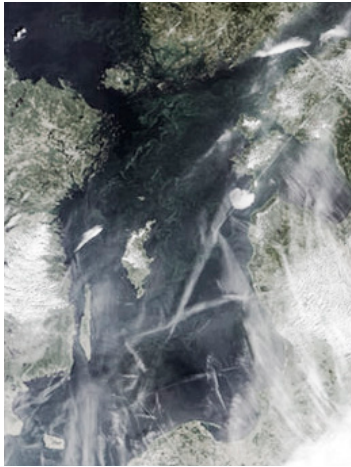
2004



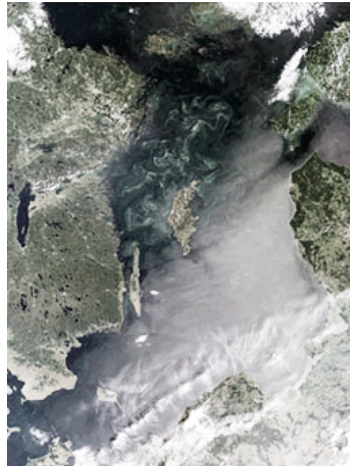
2005



2006



2007



2008



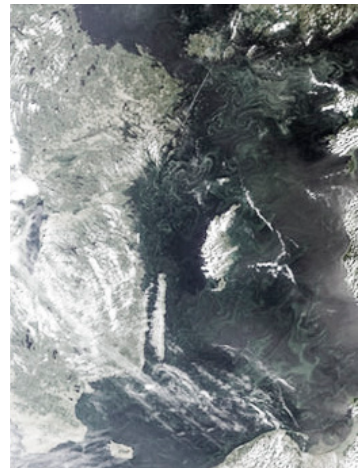
2008



2009

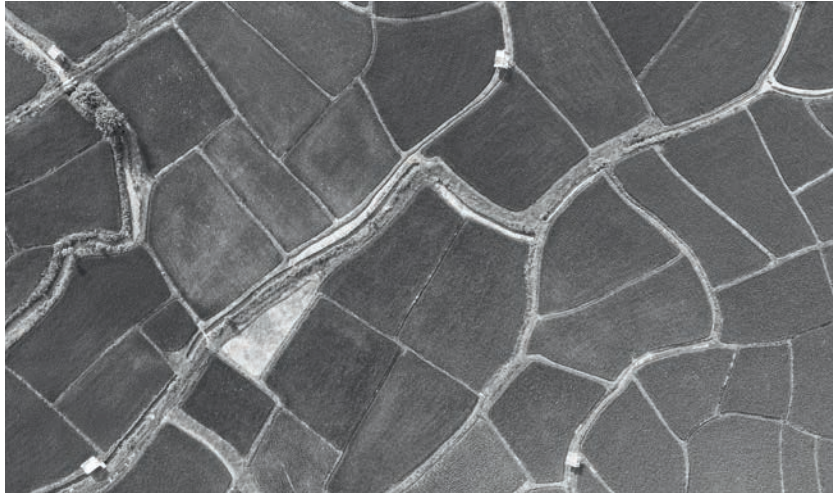


2010



2011

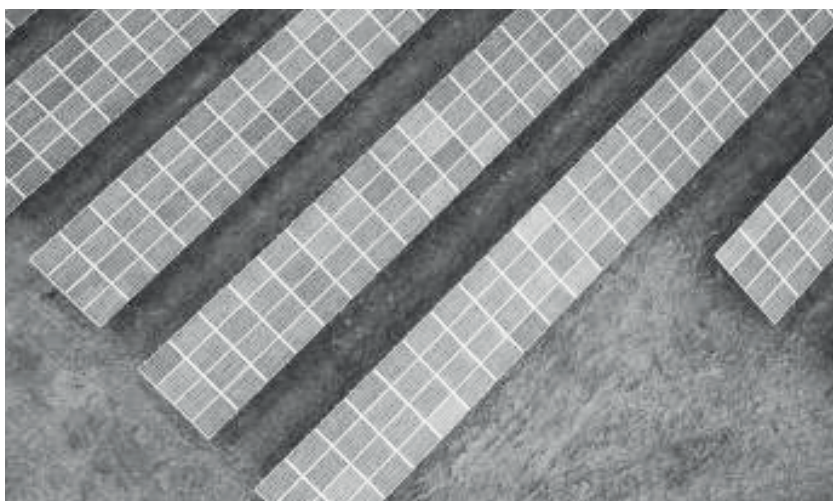
The idea of a cultivated landscape



Fields



Windmills



Solar cells



Water conditions

DEPTH



- 0-10 m.
- 10-40 m.
- 40-90 m.

OXYGEN



- Oxygen
- Oxygen content less than 2 ml. per liter
- Oxygen free

SALINITY



- 13-18 salinity
- 8-13 salinity
- <8 salinity
- Not specified

ALGAE



- Large
- Medium
- Small

Growing seaweed
Best location for growing seaweed





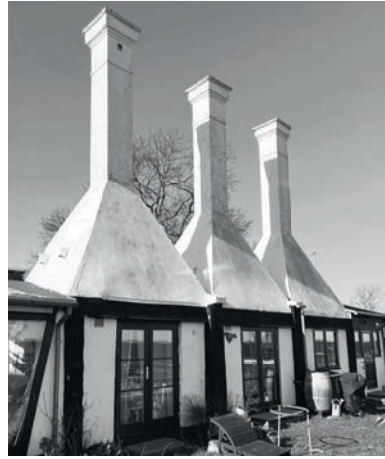
1



1



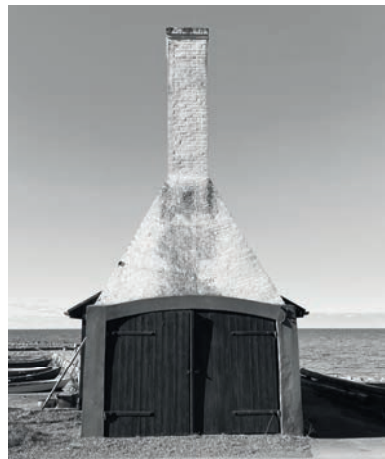
2



W6



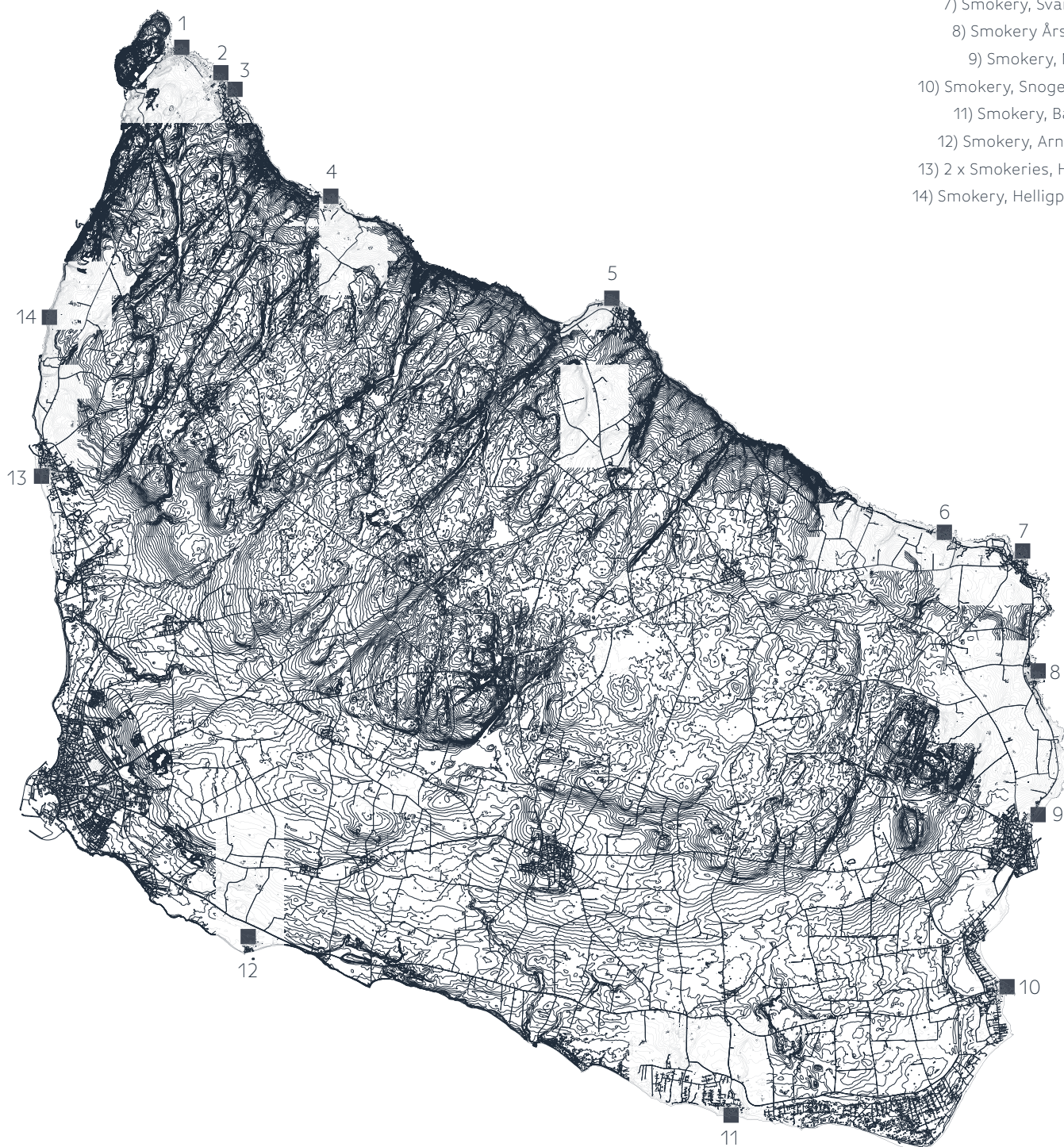
5



14

Existing smokeries

- 1) 2 x Smokeries, Sandvig Harbour
- 2) 2 x Smokeries, Møllenæs
- 3) Smokery, Gulehage
- 4) 5 x Smokeries, Tejn
- 5) 15 x Smokeries, Gudhjem
- 6) Smokery, Listed harbour
- 7) Smokery, Svaneke
- 8) Smokery Årsdale
- 9) Smokery, Nexø
- 10) Smokery, Snogebæk
- 11) Smokery, Bakka
- 12) Smokery, Arnager
- 13) 2 x Smokeries, Hasle
- 14) Smokery, Helligpeder



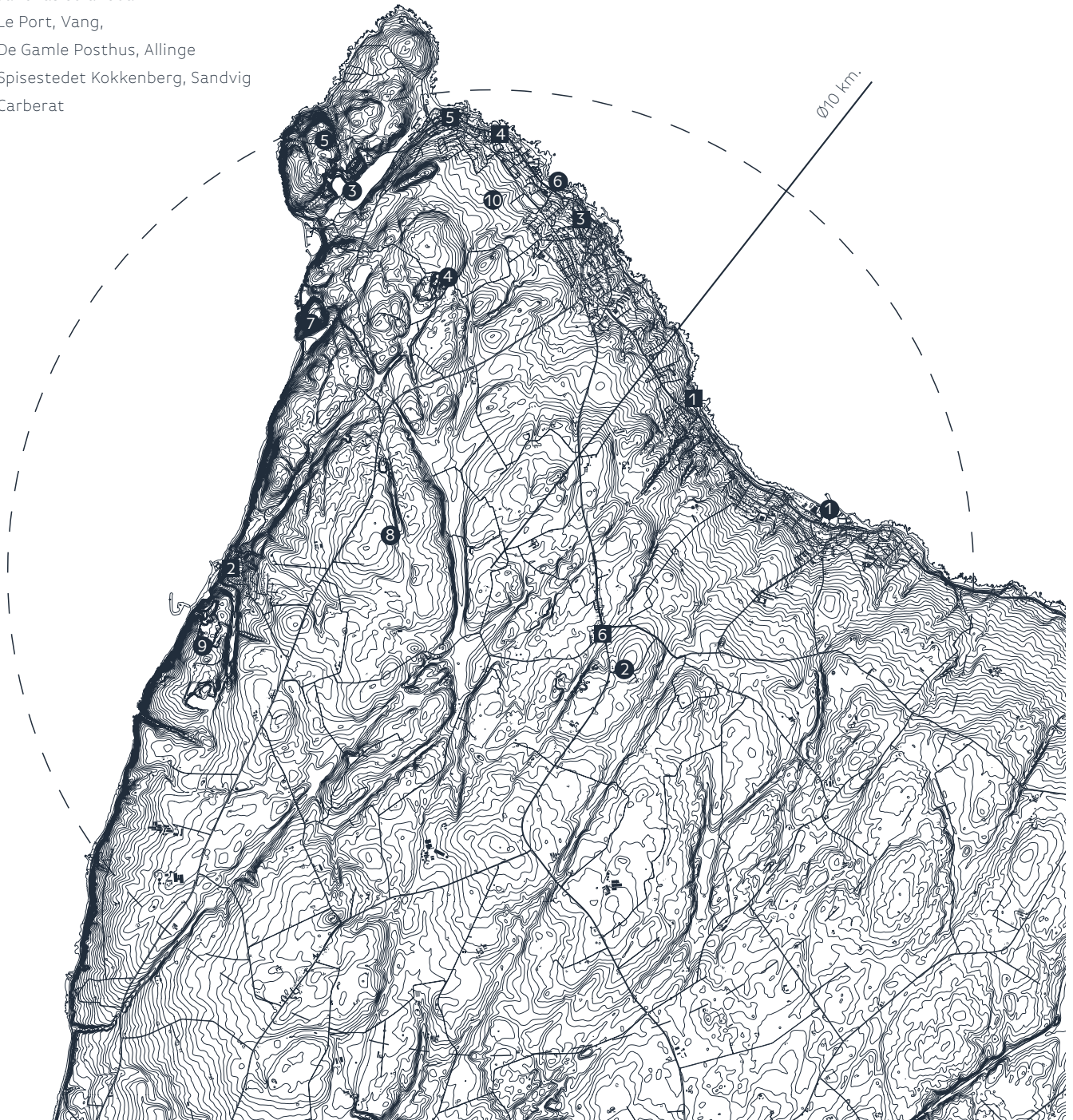
Facilities

Attractions ●

- 1) Ivandet, Tejn
- 2) Olsker Kirke
- 3) Hammersø/Opalsø
- 4) Moseløkken Stenbrud Museum
- 5) Hammeren Fyr
- 6) Domen
- 7) Hammershus
- 8) Bornholms Tekniske Samling
- 9) Granitbrud, Vang
- 10) Madsebakke Helleristninger

Restaurants ■

- 1) Sandkås Strandbar
- 2) Le Port, Vang,
- 3) De Gamle Posthus, Allinge
- 4) Spisestedet Kokkenberg, Sandvig
- 5) Carberat





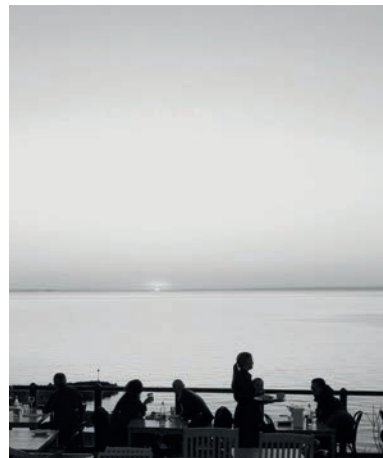
Hammershus



IVandet



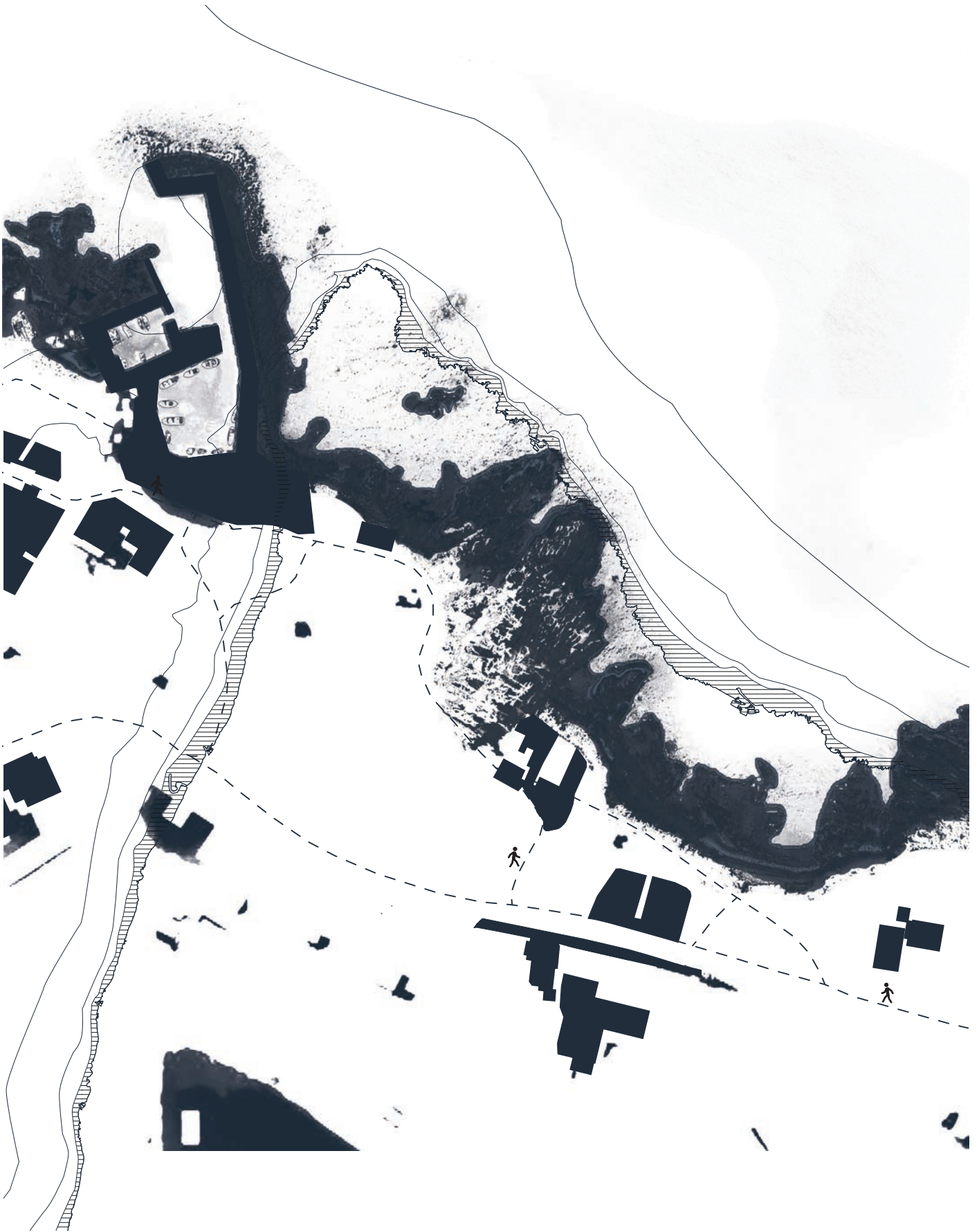
Olsker Kirke



Le Port, Vang

The land, so heavily charged with traces and with past readings, seems very similar to a palimpsest. To set up new developments, to exploit more rationally certain lands, it is often necessary to modify their substance in an irreversible manner. But the land is not a throw-away wrapper or a consumer product which can be replaced. Every land is unique, whence the need to "recycle," to scrape clean once more

- André Corboz, "The Land as Palimpsest" (1983)



Location



North view



West view



South view





Kalas icecream



Sandvig Stranhotel



Sauna



*Walk, steps, landing, perspectives, ground, shapes,
perspectives, ever changing, stopping, fix-points,
towards, looking up, another view, differently,
surroundings, moving, arround, thoughts, change,
views, closer, stepping, touching, land, place,
positioning, form, a sense.*



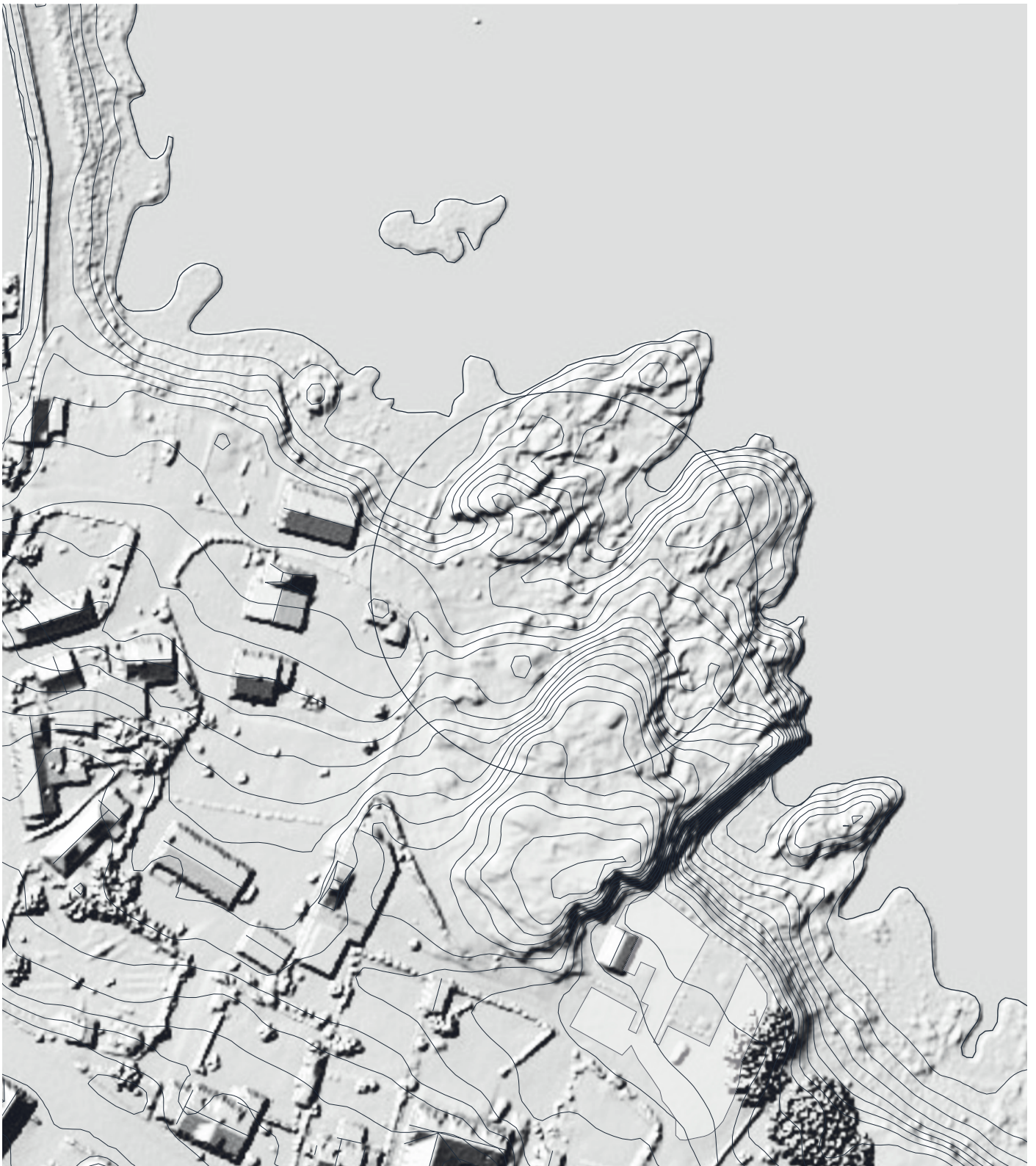


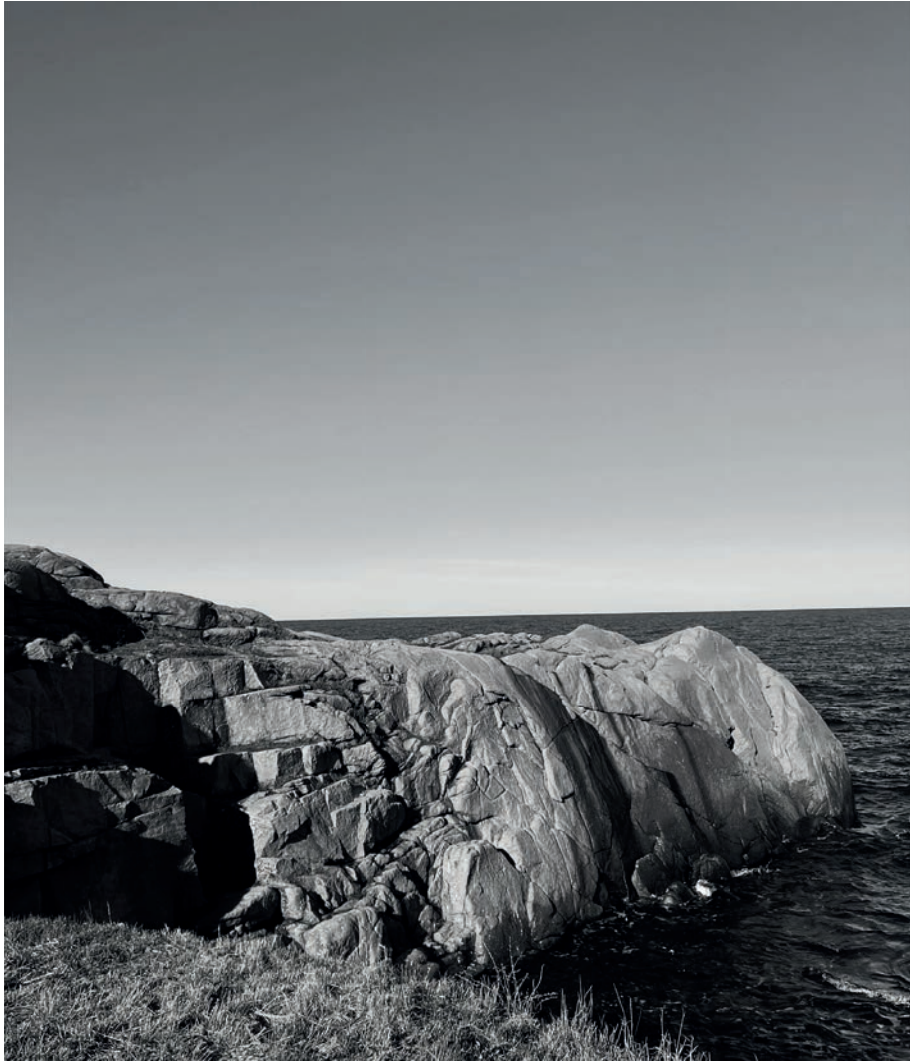
01 Site



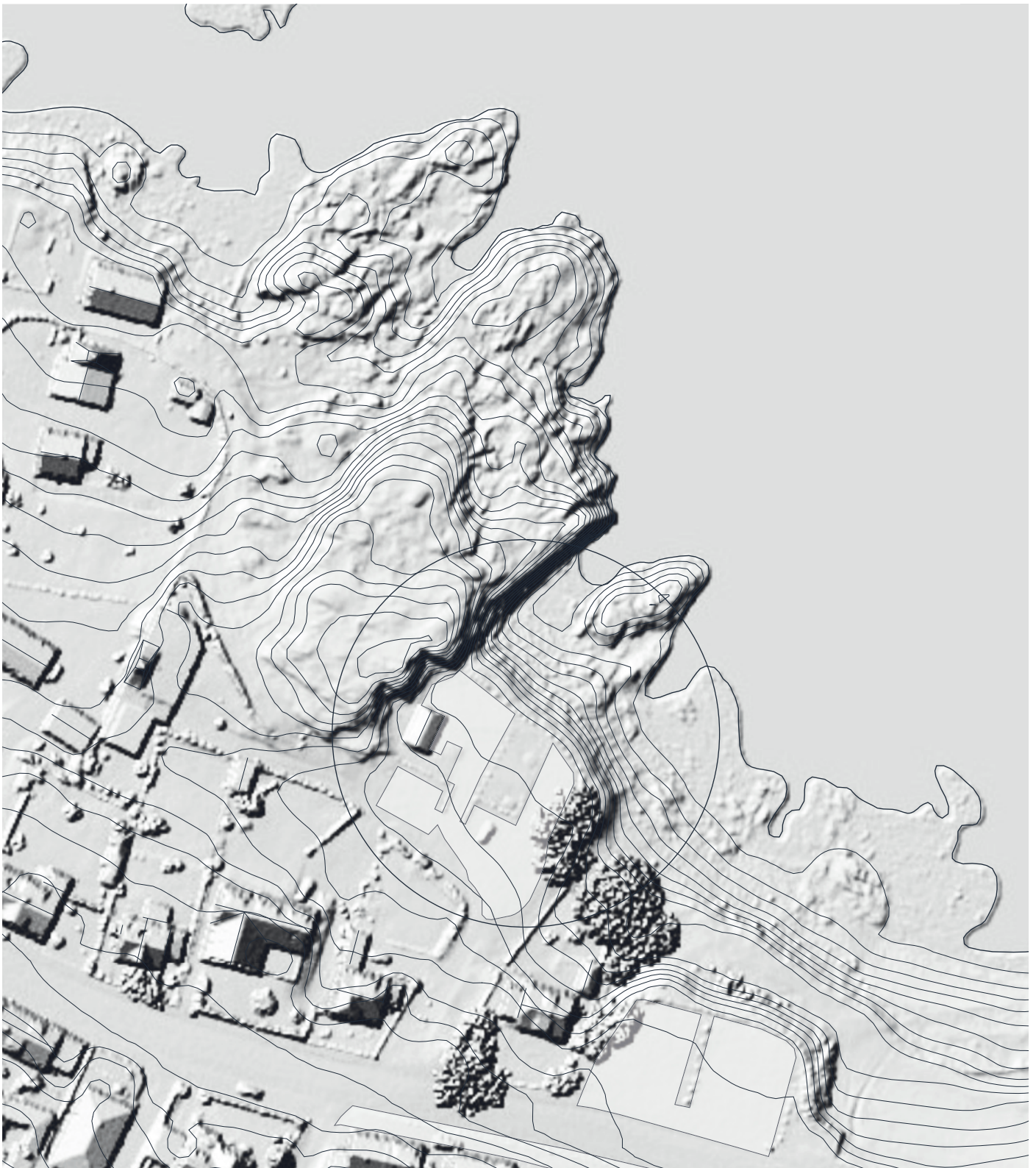


02 Site



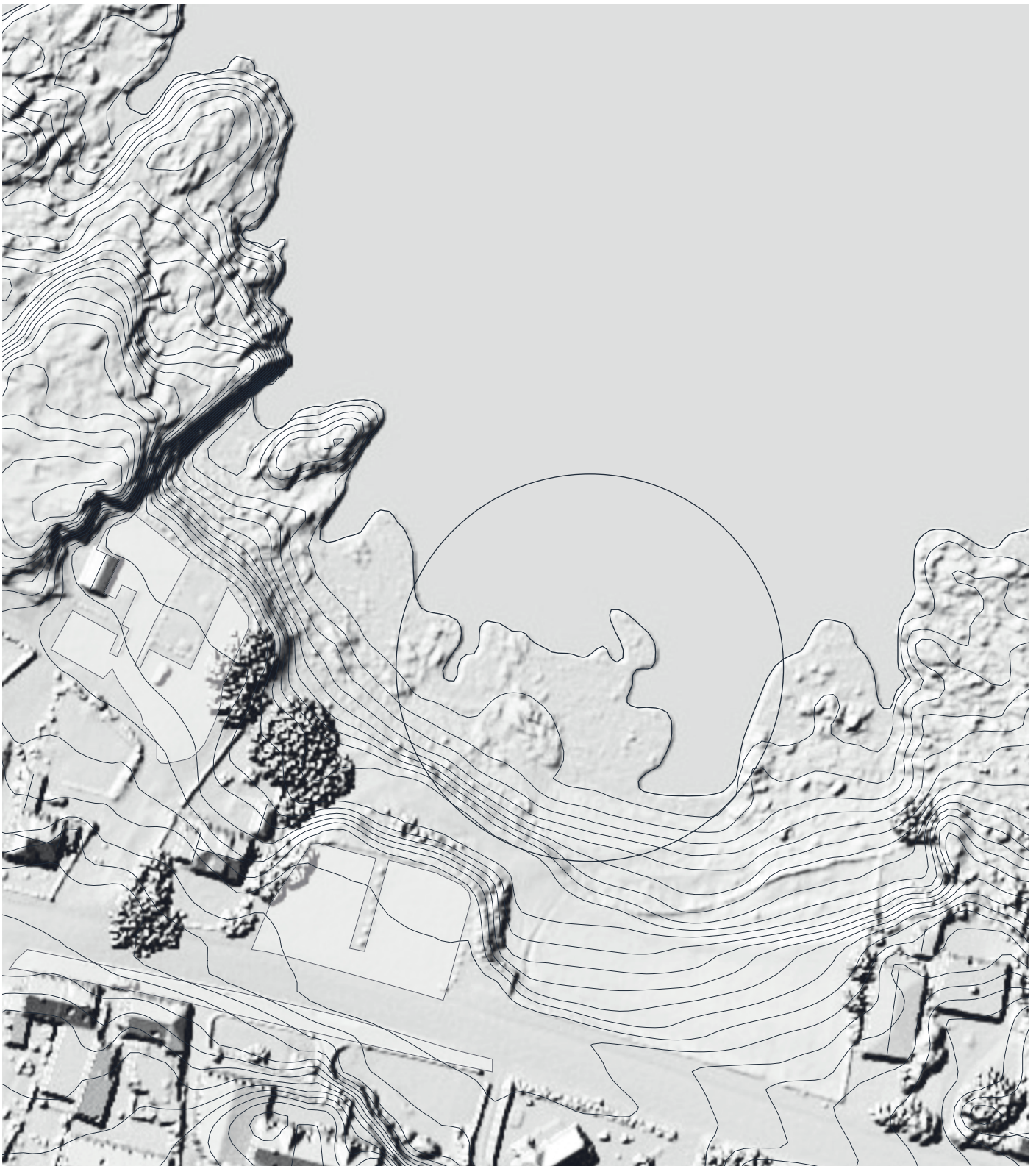


03 Site





04 Site





Serial vision 01



Serial vision 02



Serial vision 03



Serial vision 04



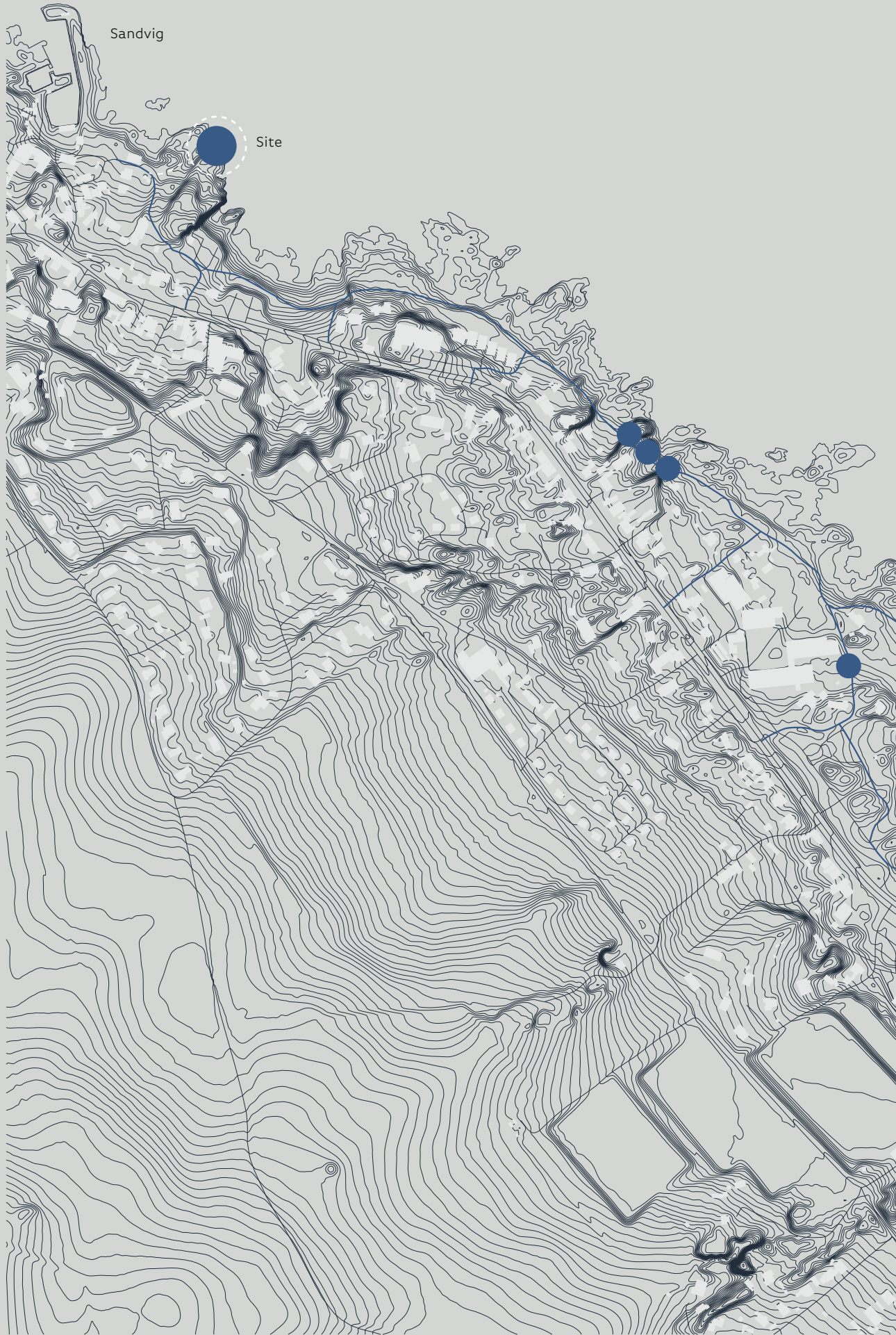
The land register you wish to work with is owned by the municipality and there is no beach protection. The rocks on Bornholm are special to the inhabitants, but sometimes you have to challenge and move boundaries to make people see new potentials. I wouldn't suggest removing any rocks to create space for your project, but rather build around it and connect it with something recreational.

Your place could create a strategy and connecting some initiatives. We in the municipality are working on implementing a coastal path between Allinge and Sandvig. Your approach could be a part of the coastal path and give it a greater experience.

In the winter period most of the towns are closed, but the locals ask for more activities. More and more cultural evenings and events are arranged by the inhabitants and restaurants take turns to stay open for different weeks to also gather people.

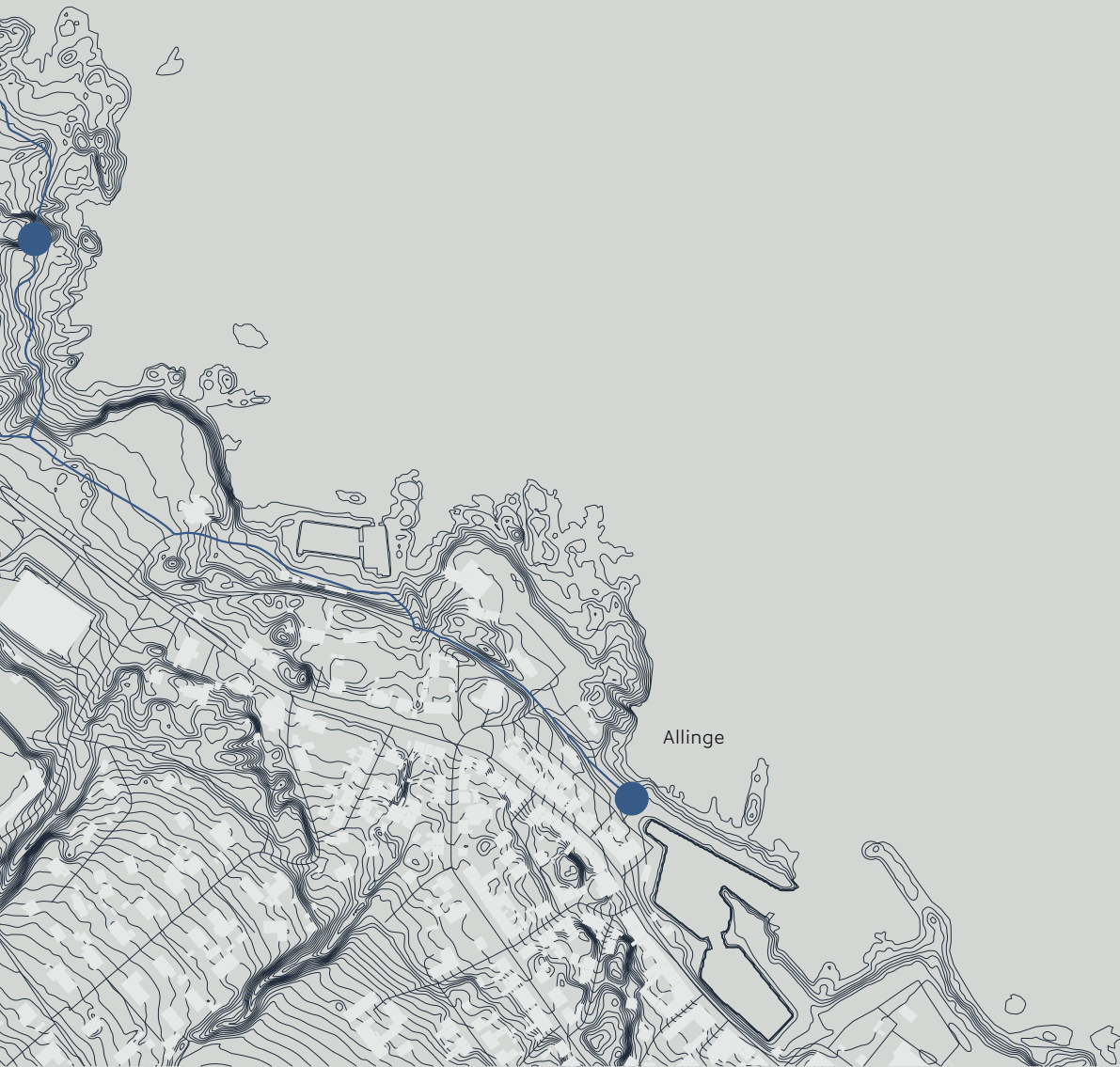


Rocks



Sandvig

Site



Coastal path, municipality
1:5000



Coastal Directorate

In connection with being in contact with the Coastal Directorate via mail, they guided me to read different cases. I have gathered some fragments and information from the given information.

Primarily the project is a sustainable approach that have a public function. The beach where it is situated do not have protection, also it due not touch the Natura Sites 2000 - therefore can a dispensation give the possiblity for creating the project at the chosen site.

- It benefits a group of members who, with the facility, get the opportunity for a recreational marine experience
- The facility is not considered to affect the port's operations
- The Coastal Directorate has i.a. assessed that there are no significant nature considerations that speak against the project, just as there do not seem to be other considerations that speak against the project.
- At the same time, all plans and projects must be assessed for their impact on species covered by Annex IV of the Habitats Directive.
- The Coastal Directorate has assessed that the project will not have a significant impact on Natura 2000 sites or Annex IV species.
- An impact assessment is prepared for the project.
- Get an assessment from the Danish Environmental Protection Agency, the Danish Maritime Authority and the Municipality

