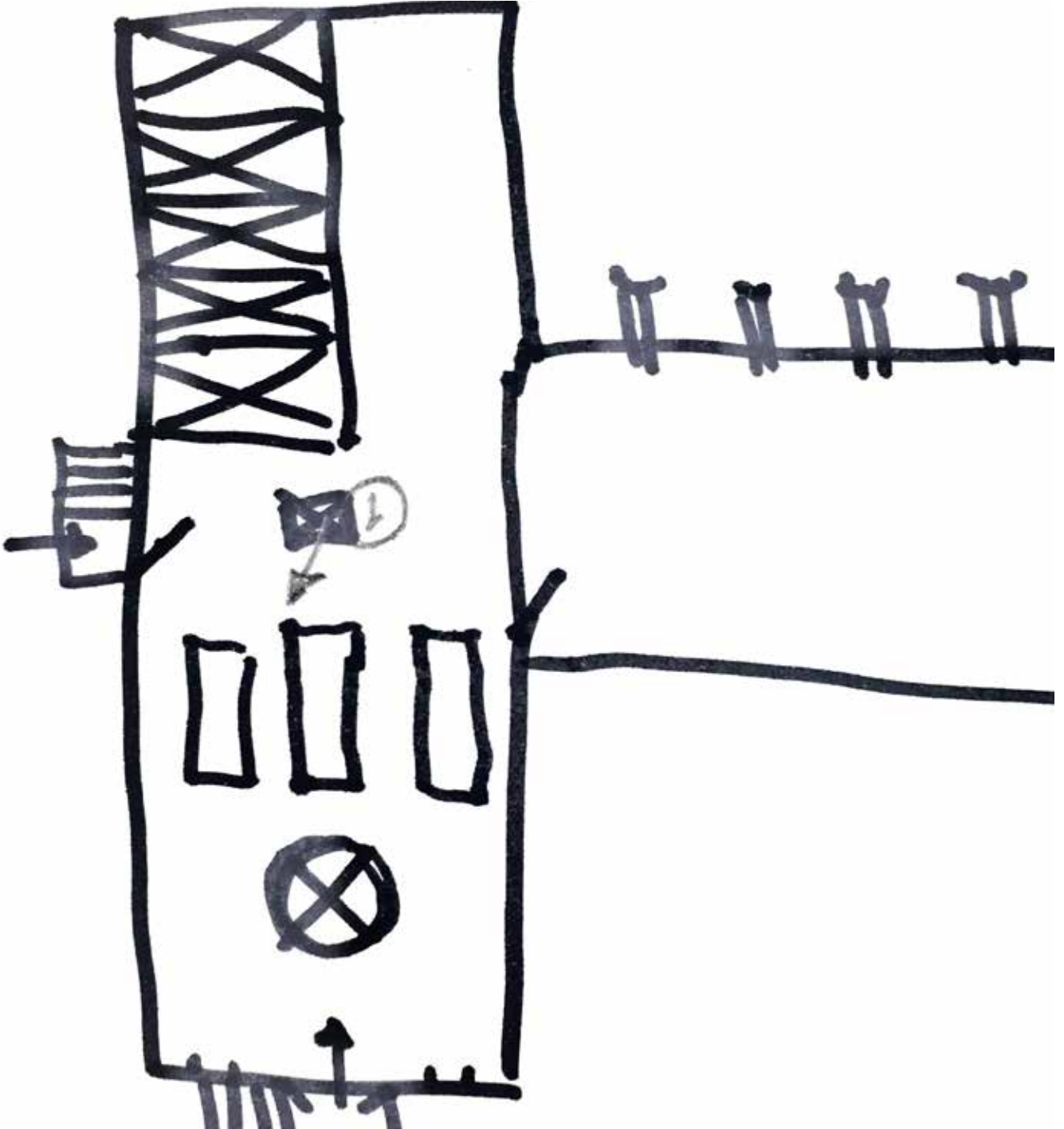


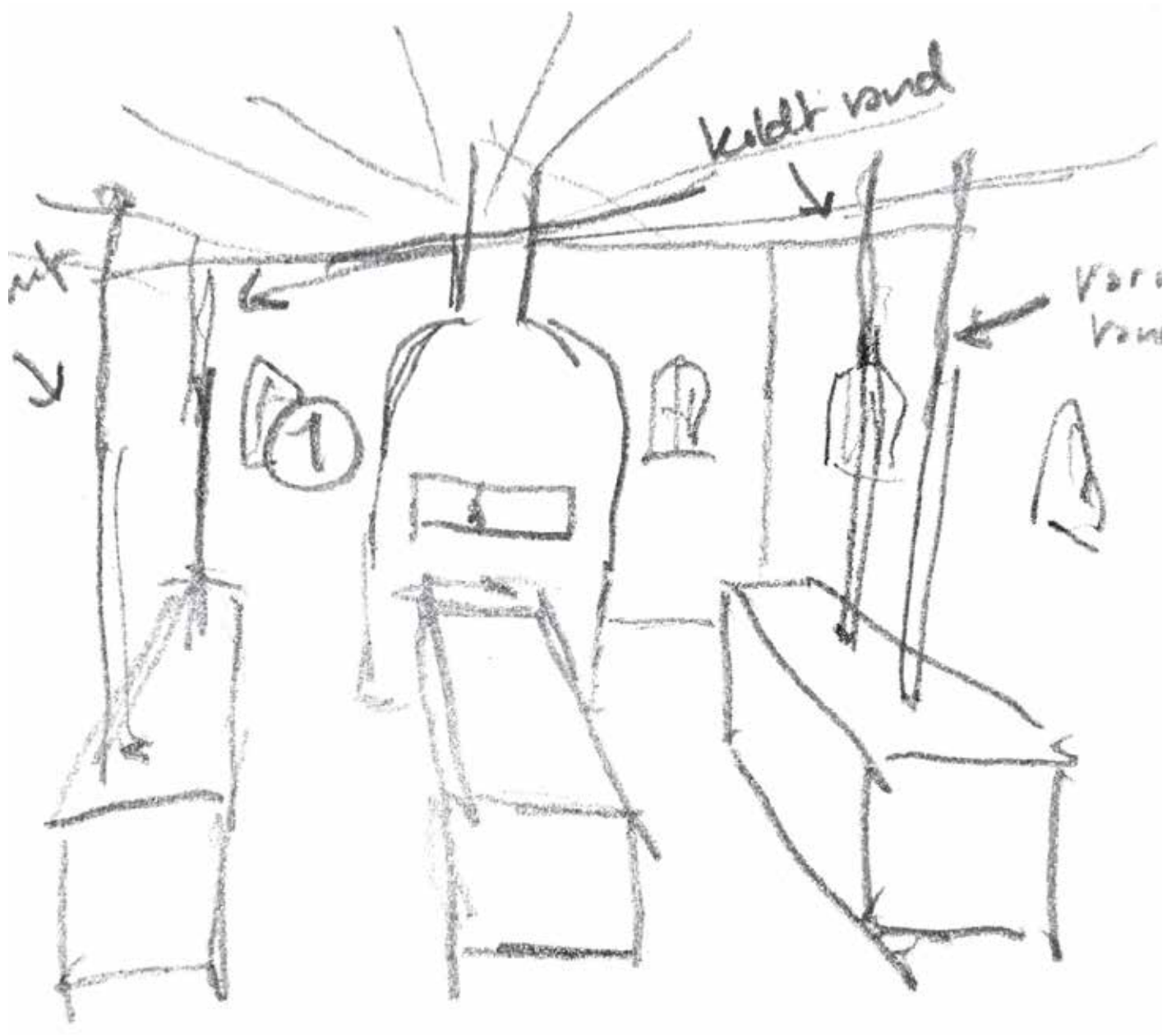
10 m

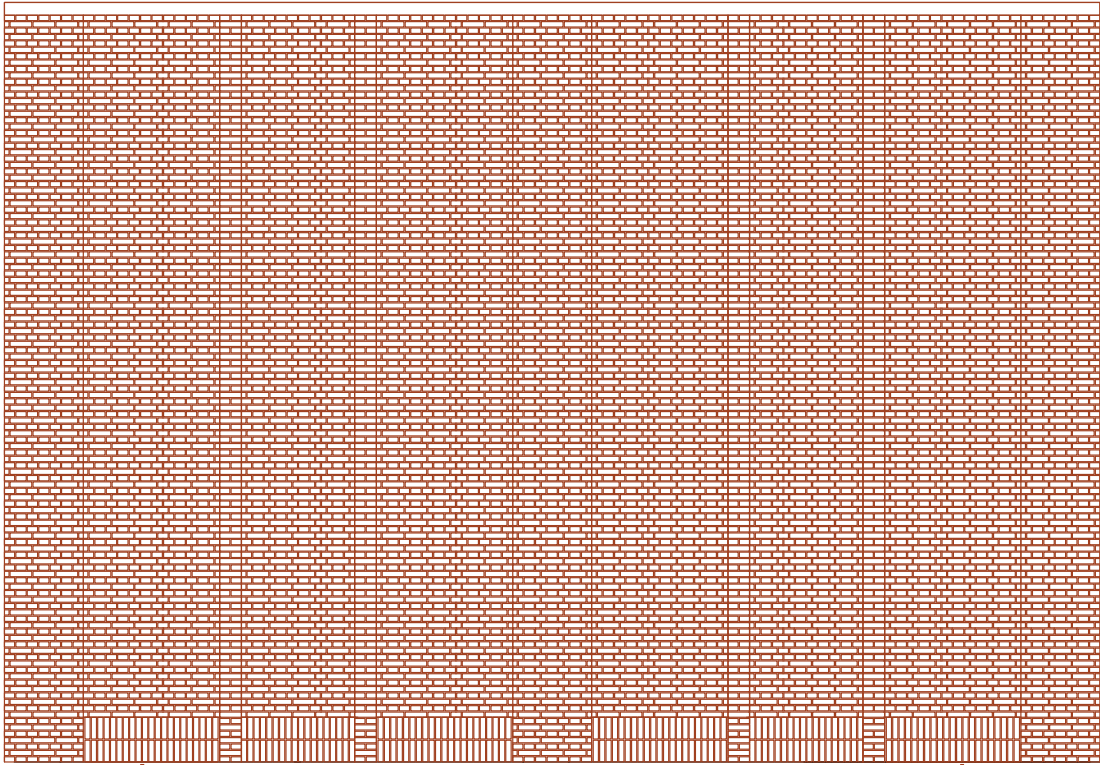
1

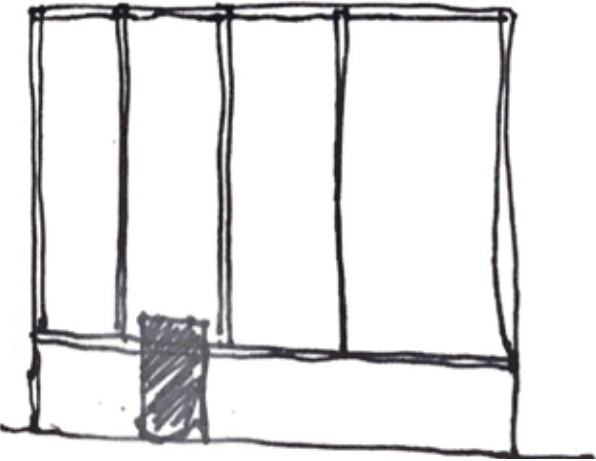
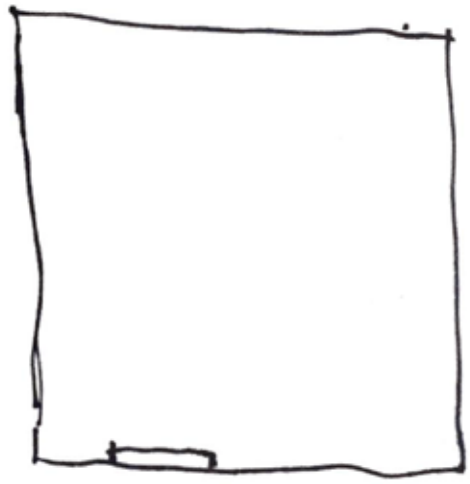
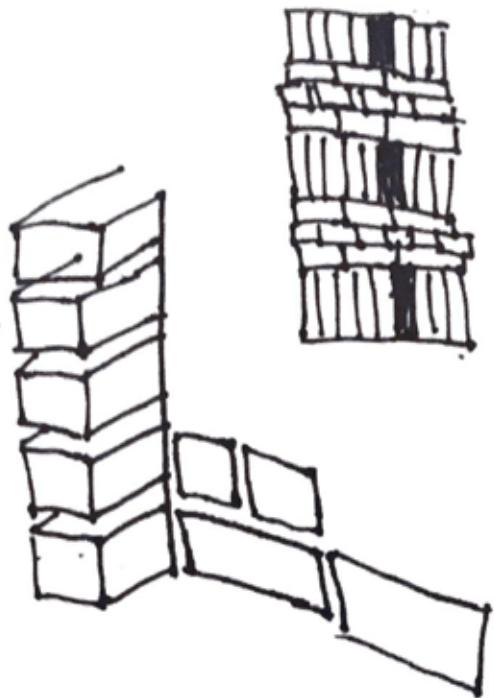
Trenkumudat  
 Bypass, see IV  
 Address Dempasari, 26  
 3400 Lembang

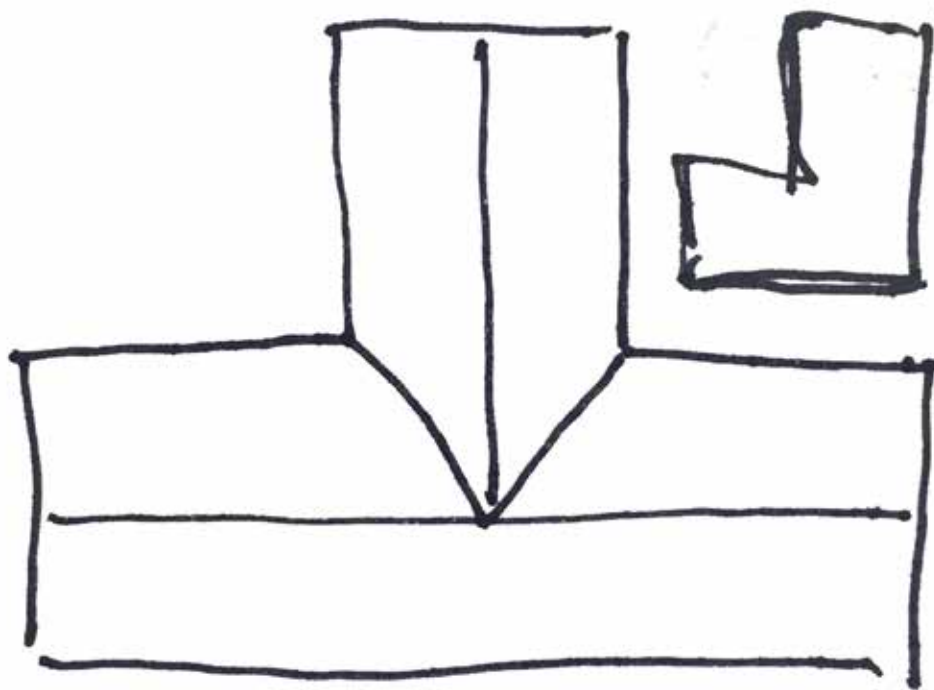
A-1, Dondong, Bolo, 08.09. - 18.  
 Ernie, see 'Academy/Depdik, s/Negara, Nona  
 800 11.50

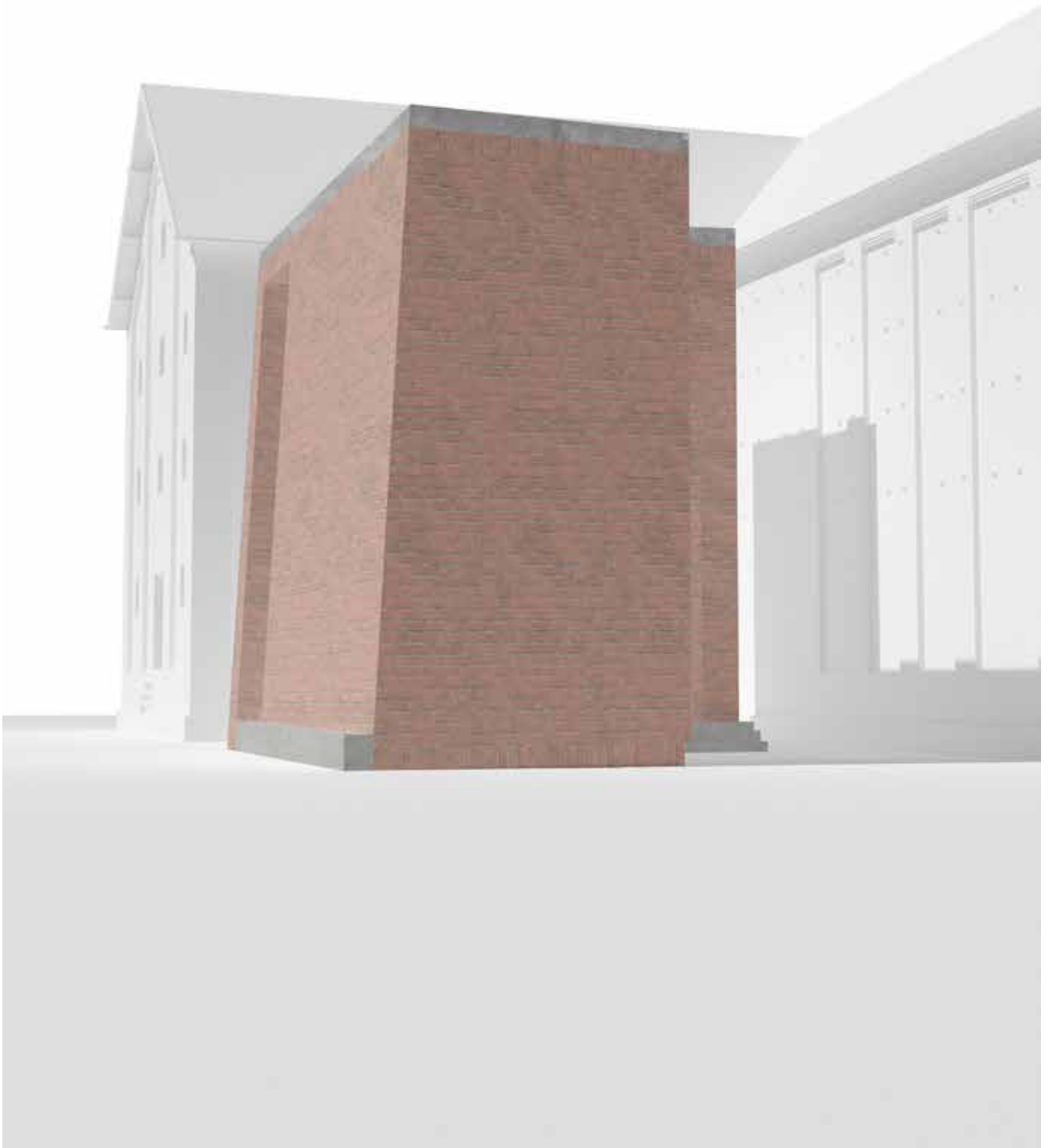




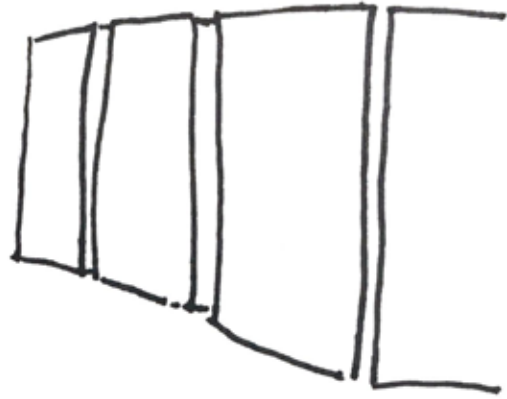
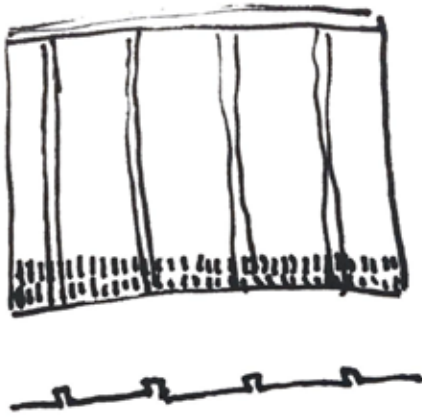




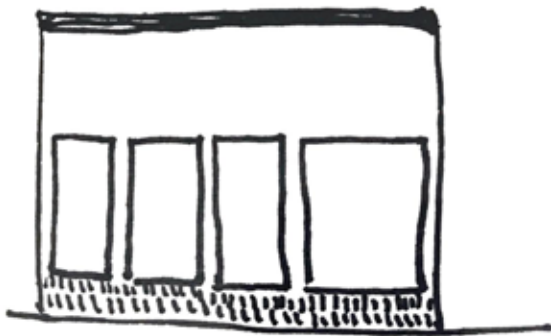
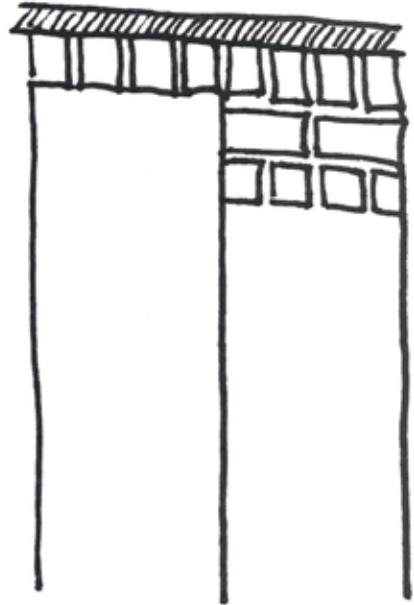
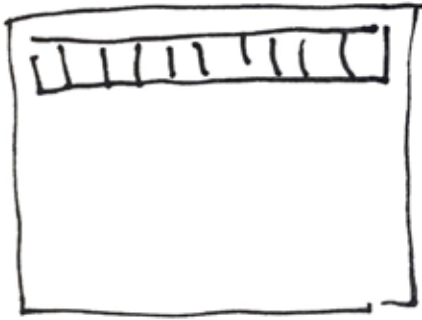




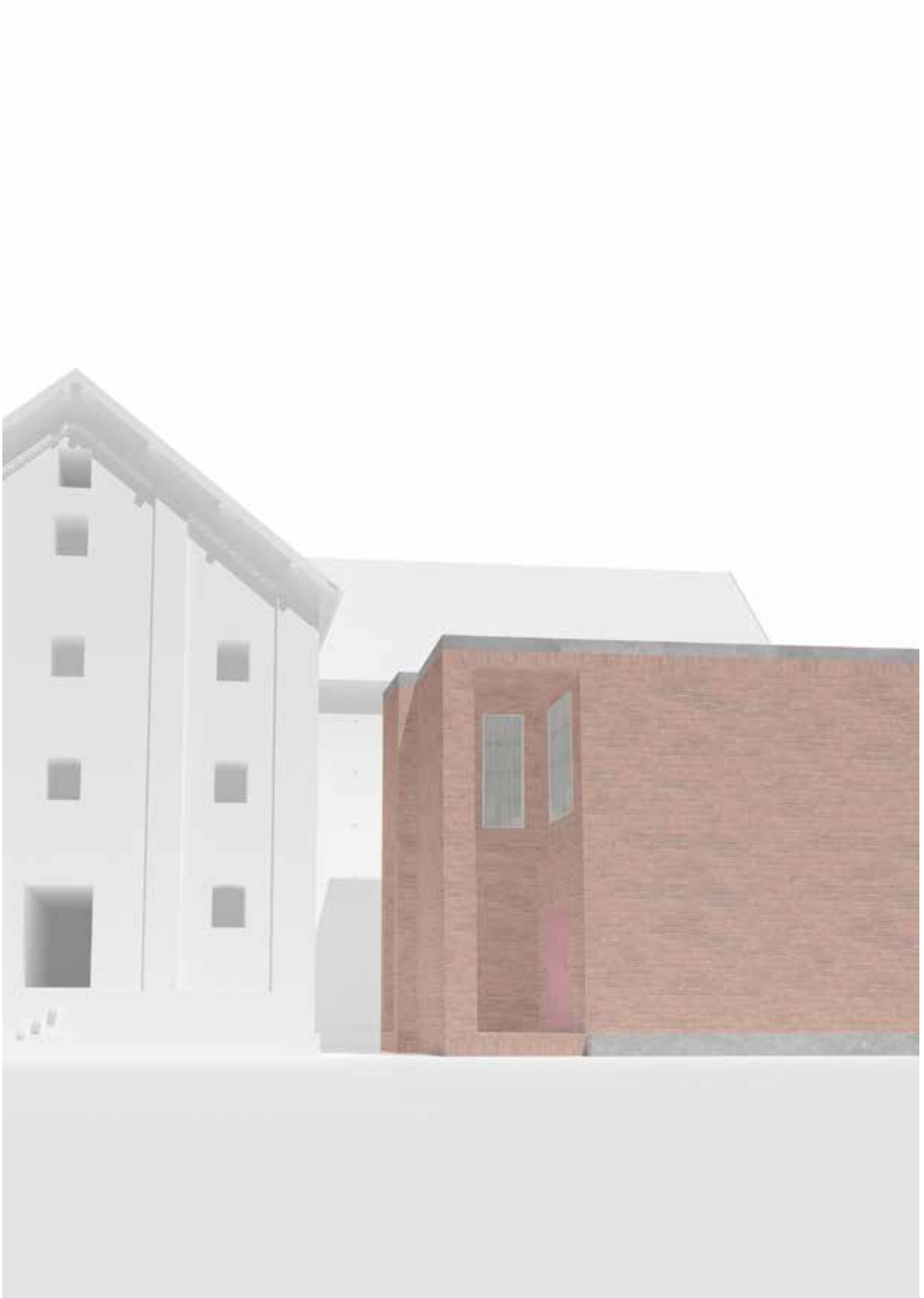


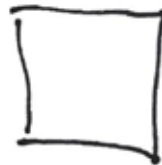
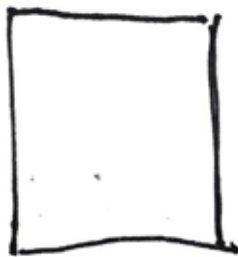


← Vindue i  
toppen  
(overlyst)

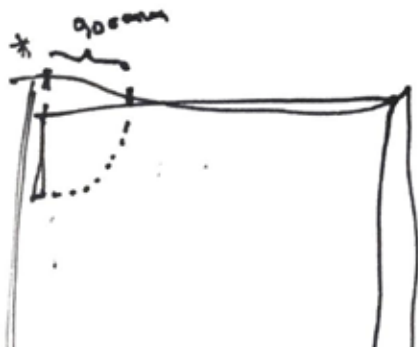


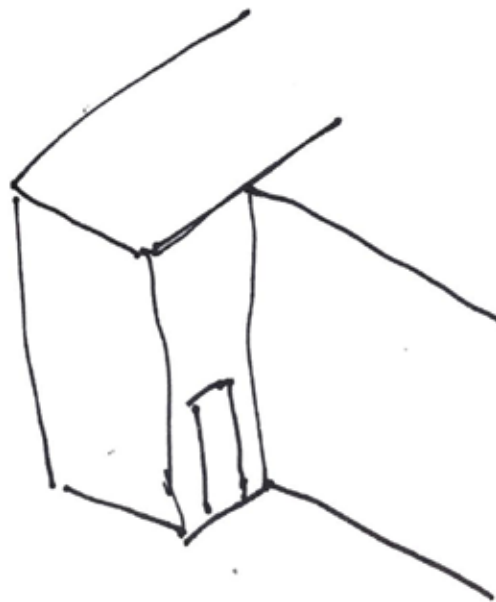
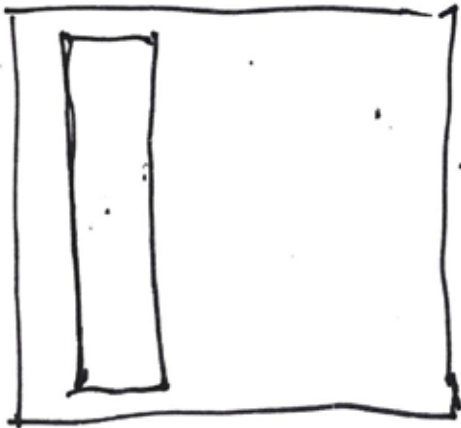
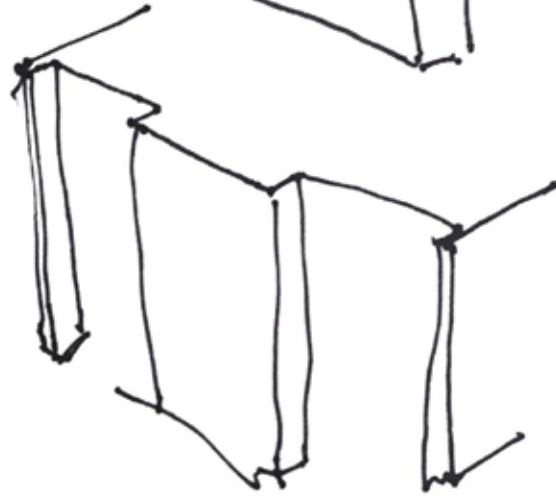
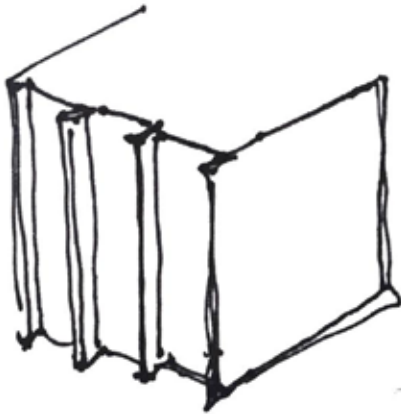
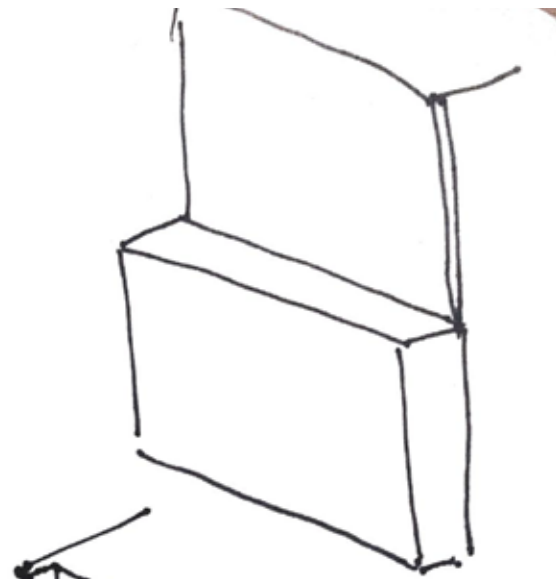
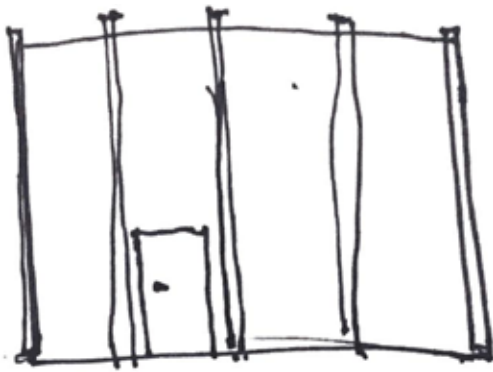
... ..





Trappe :  
    bredde : min 1,3m  
    → fri bredde (ml. håndlister el. væg og håndliste)  
    = min 1m  
    → fri loftshøjde = min. 2,1m

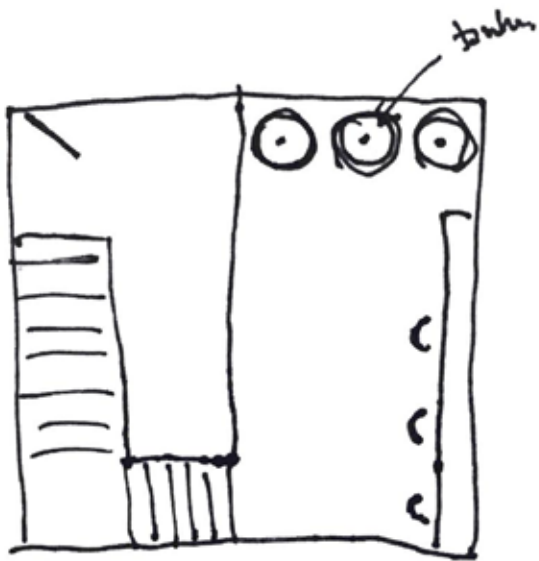






Rumme:

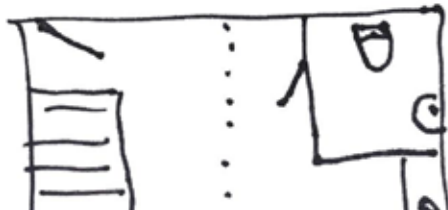
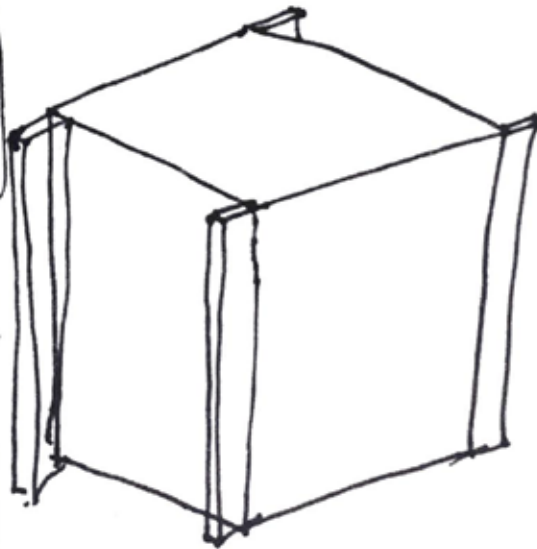
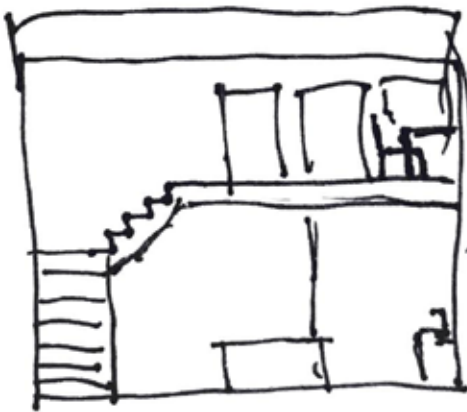
- toilet
- spiseskive /  
televægen
- testborstøje
- mikrobryg-test

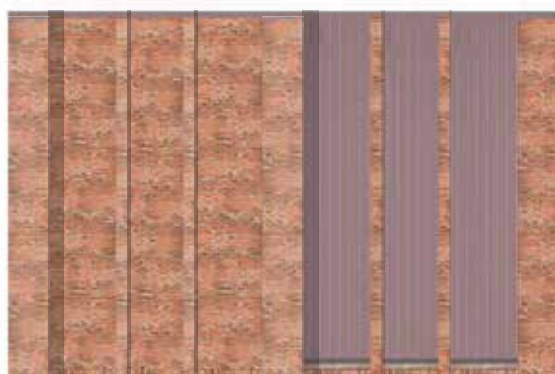
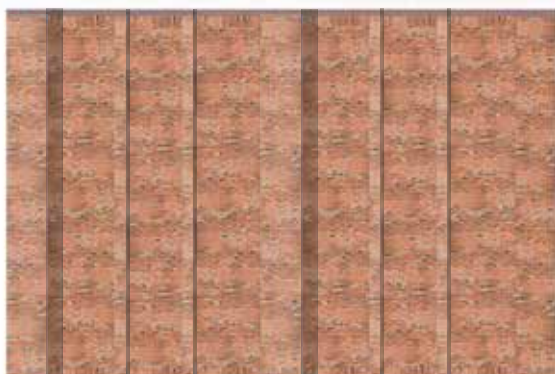
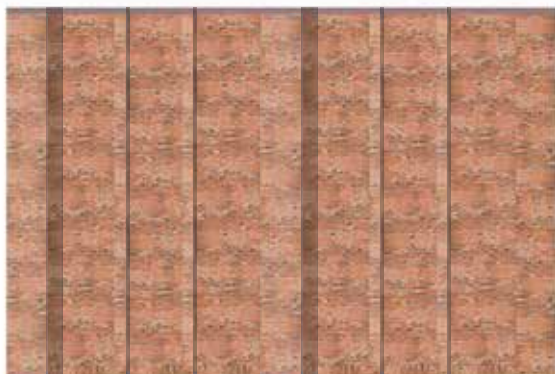


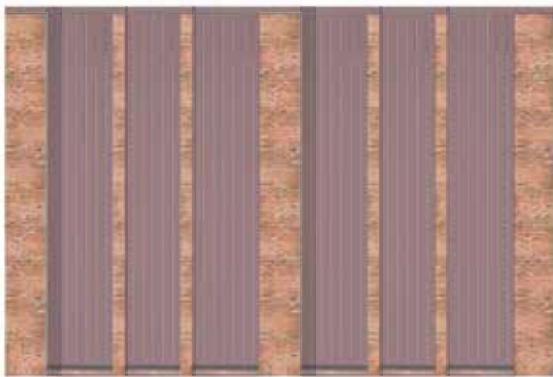
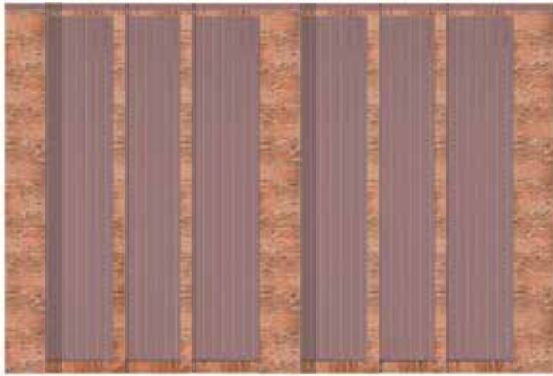
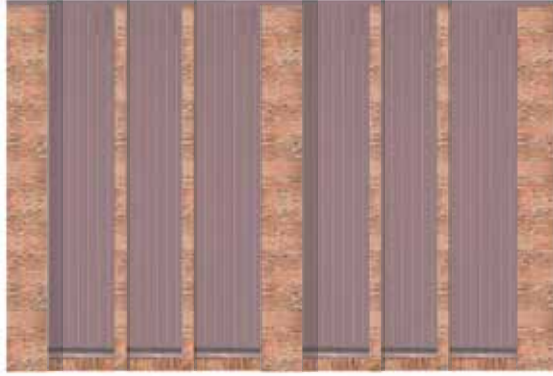
Programatik:

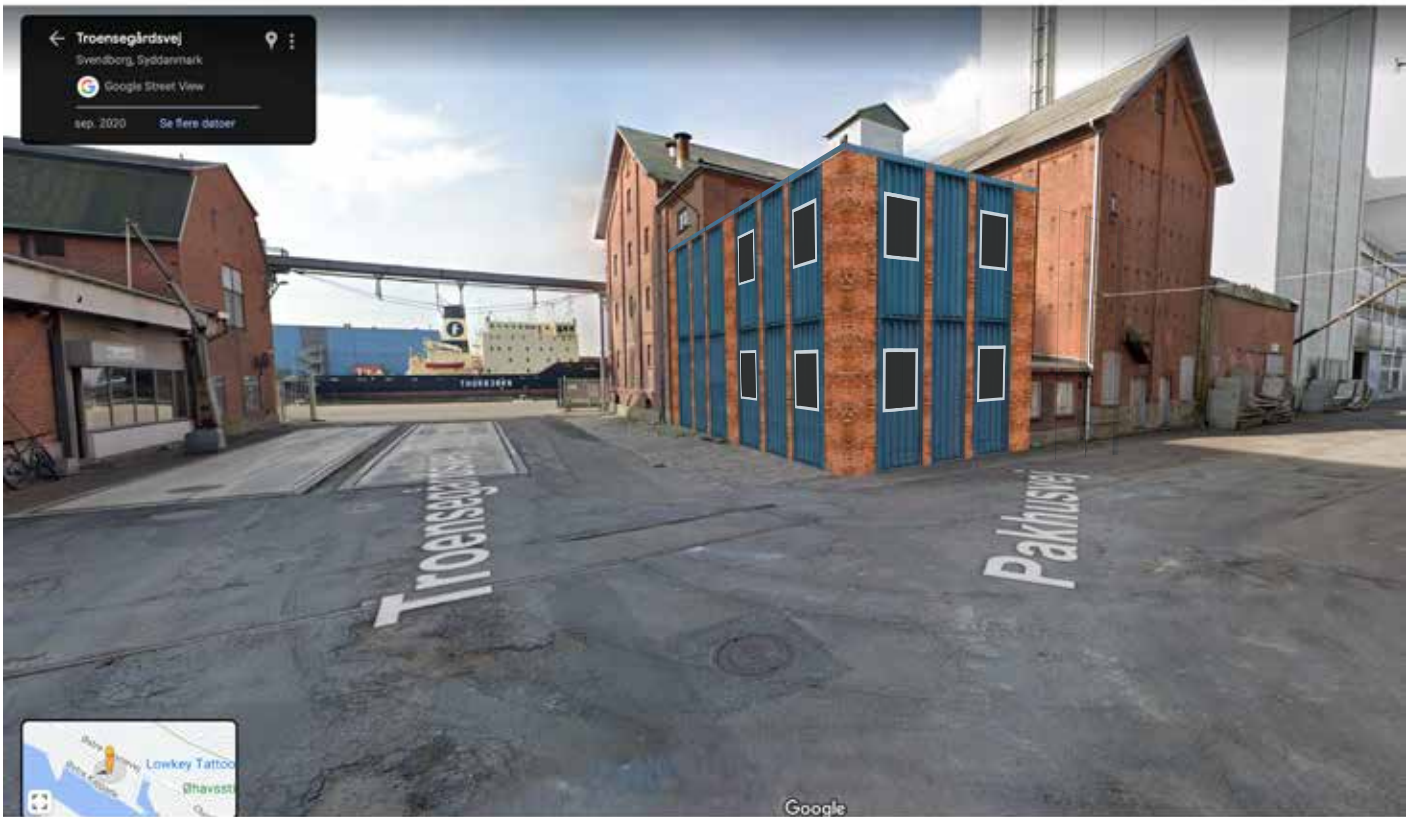
- toilet på stueetage.

enten toilet + televægen  
i stueetage og  
løb + bryg oppe,  
ellers toilet +







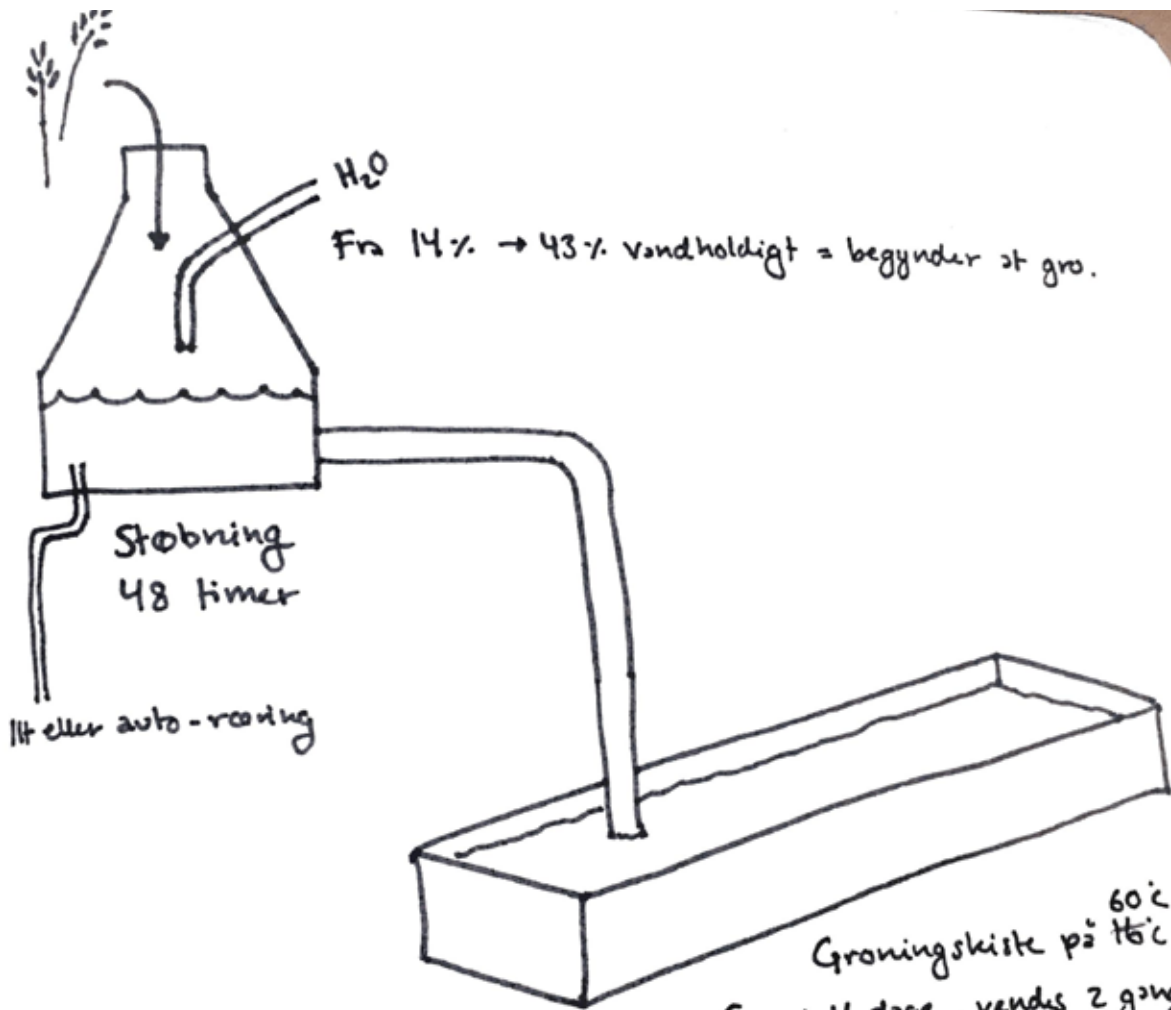






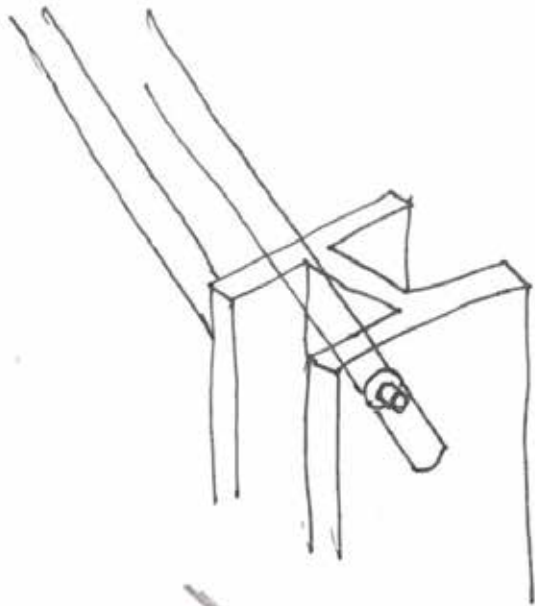
→ Japanske kuche, Minko-ku.

• Hvordan kan man lære om



Fra 14% → 43% vandholdigt = begynder at gro.

Groningskiste på 60°C.  
Gro i 4 dage, vendes 2 gange  
dagligt. Holdes i høj luft-  
fugtighed.

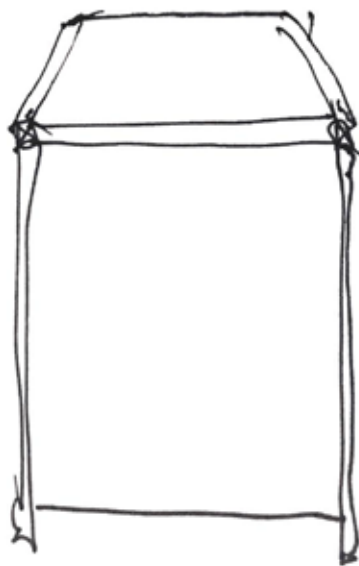
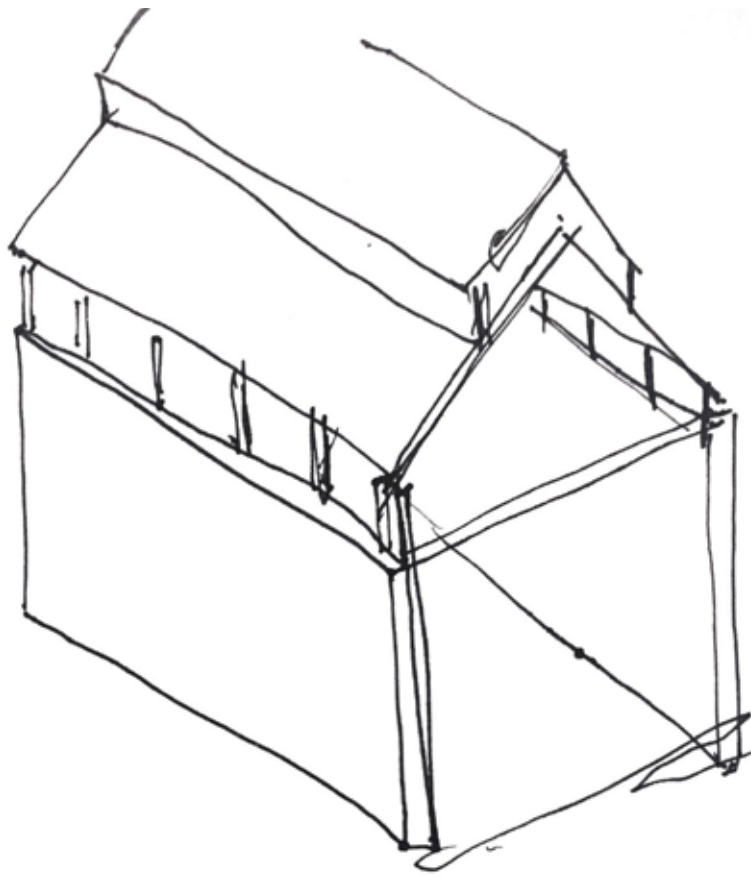


4848/

75/5

55.5

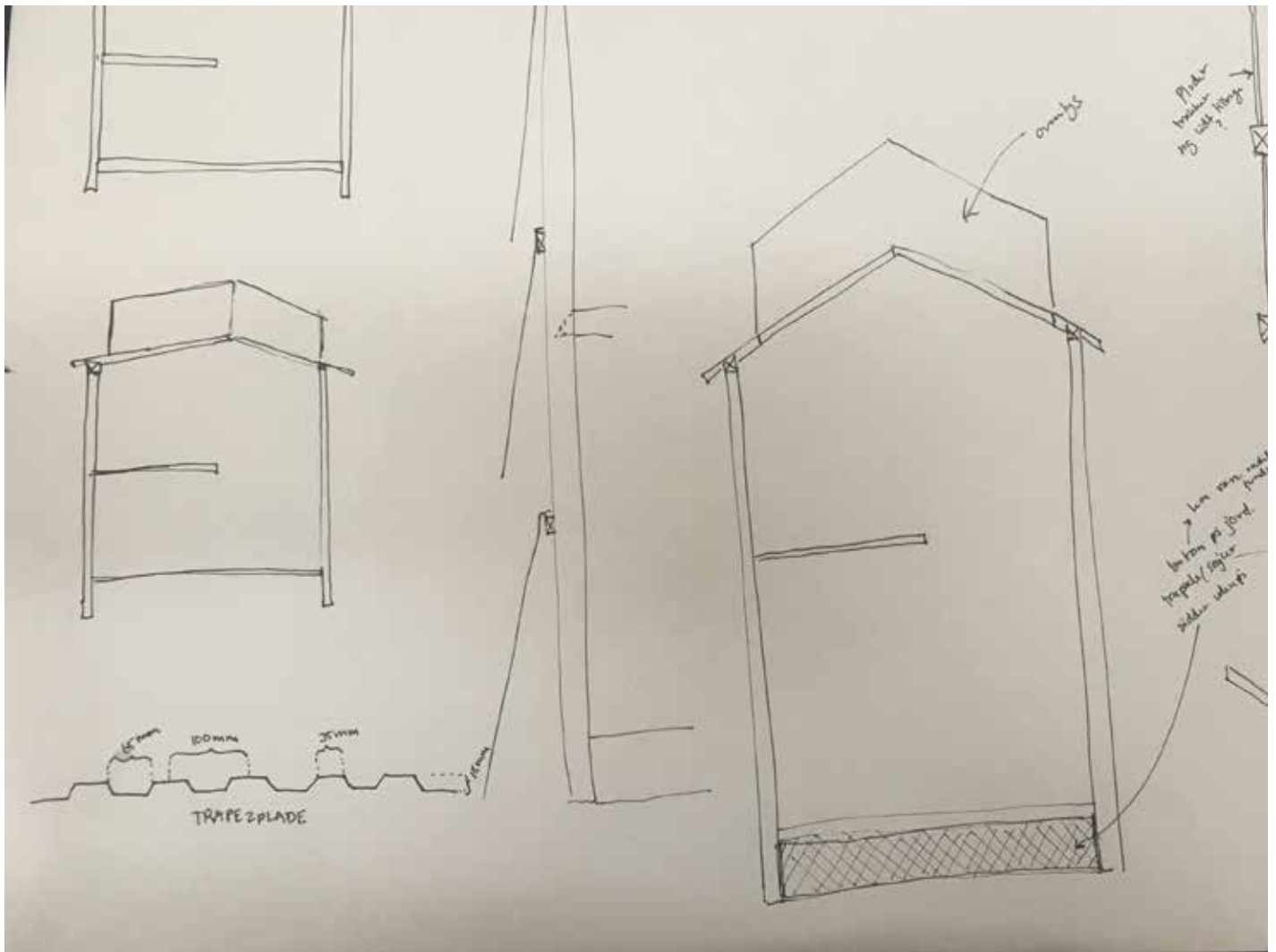
57.27

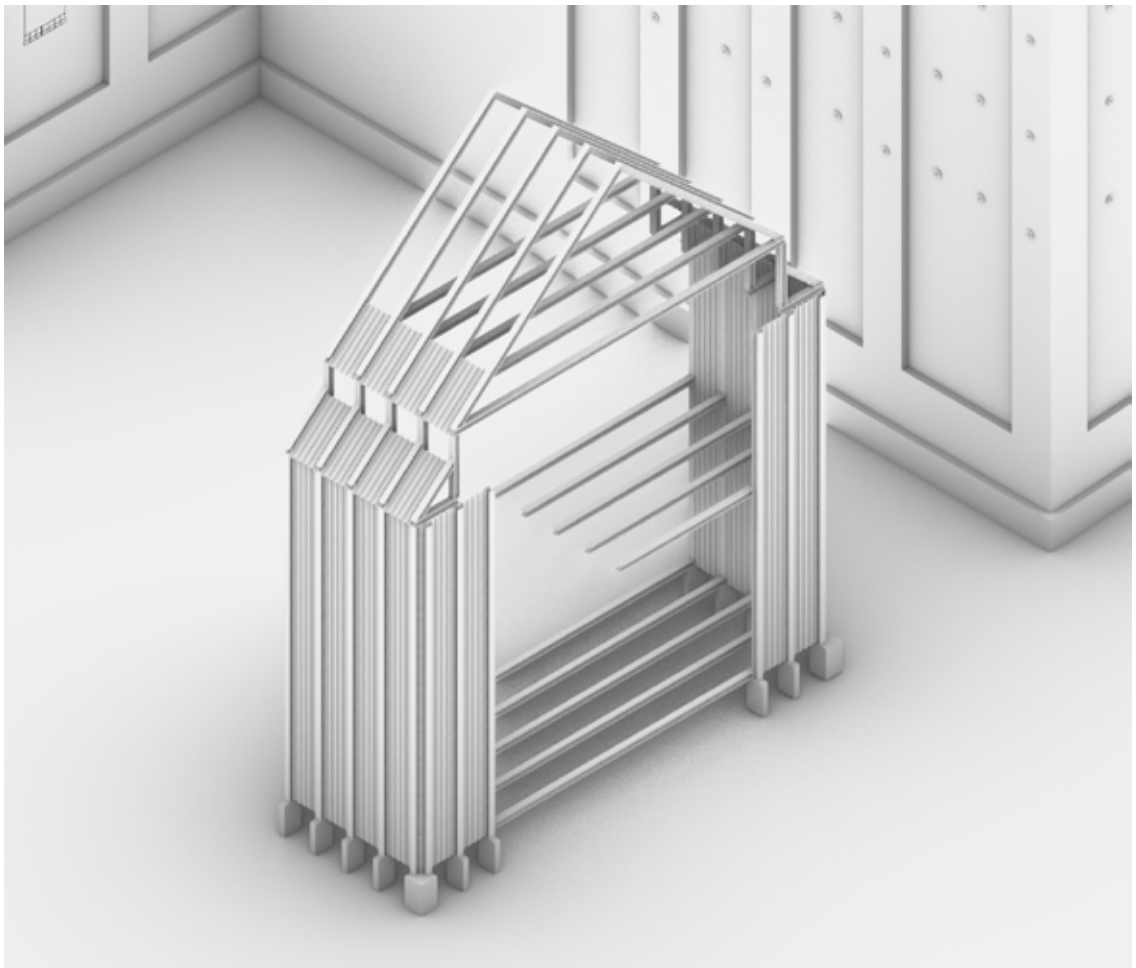
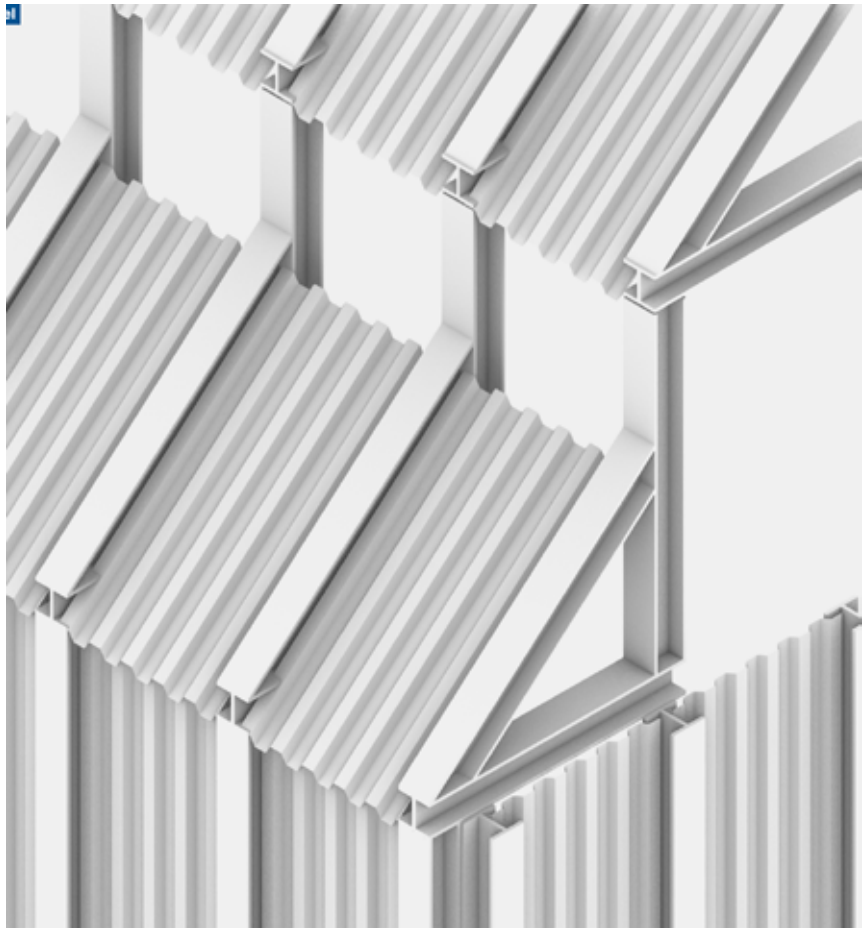


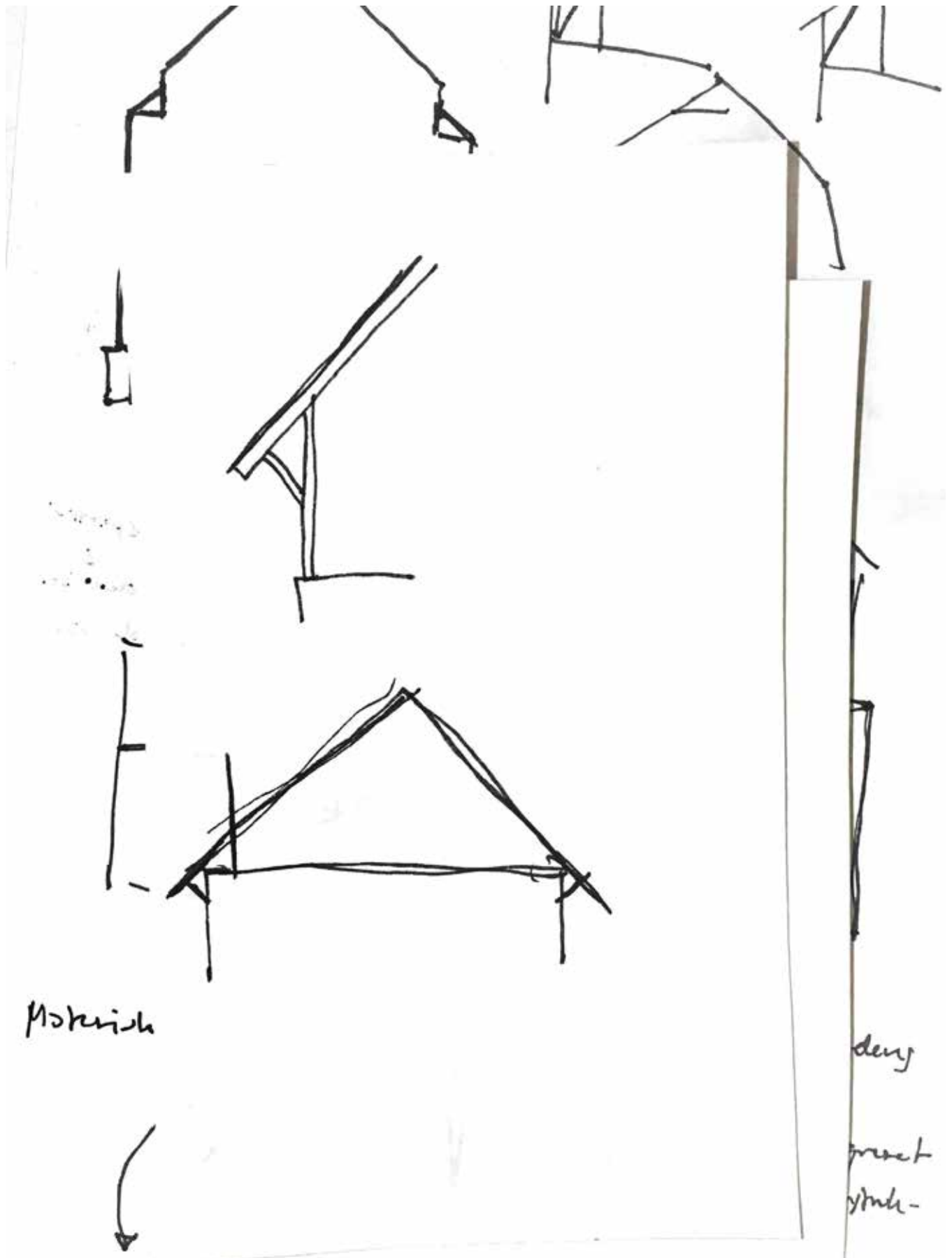


Historisk: hoves / der industrialiserede verdens  
 stiftighed.

Udsmykning: hovelet dekonstruktion / integrere  
 udsmykning i form af hovelet







Mokrish



denj

great  
yml-



