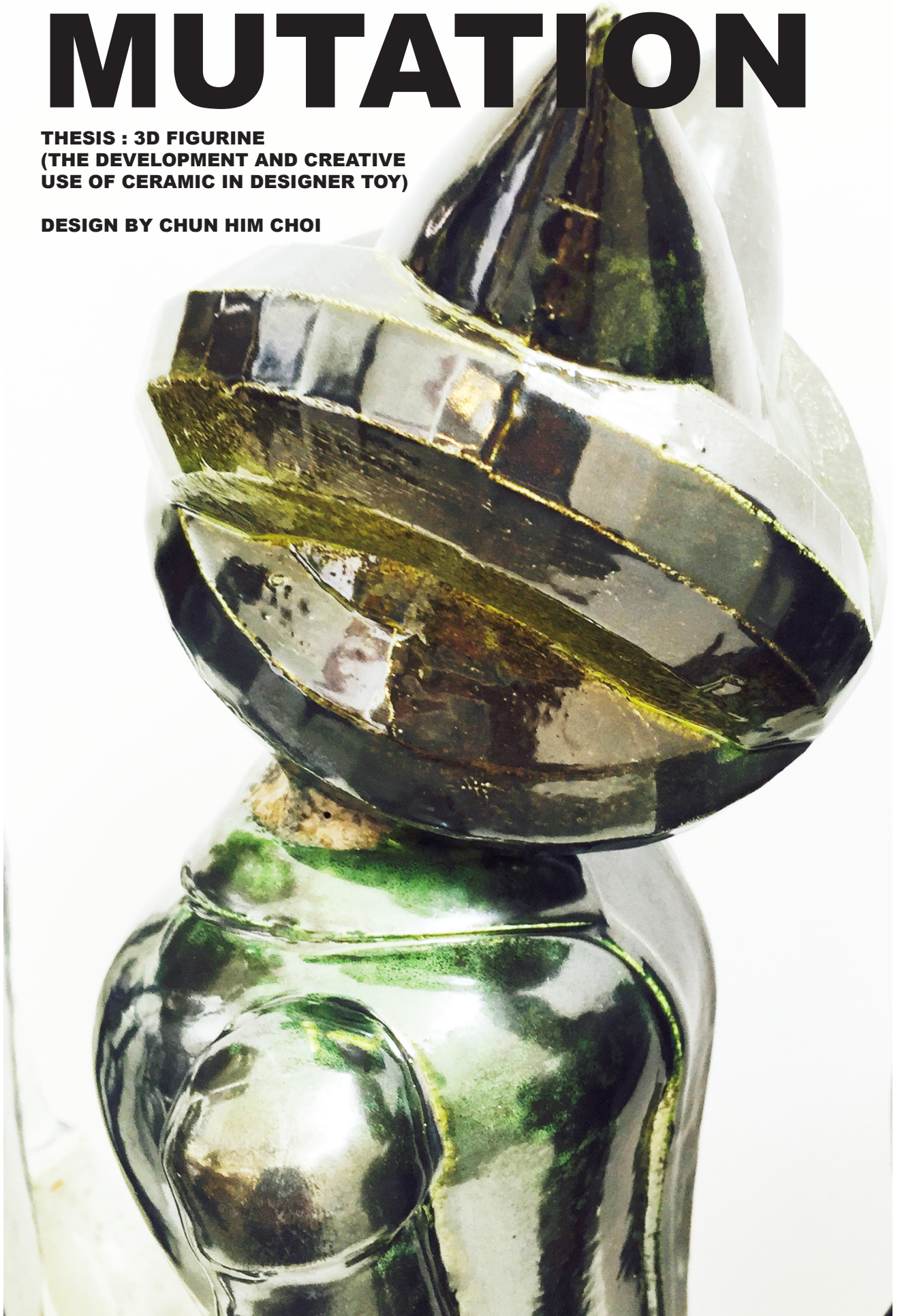


ABNORMAL MUTATION

**THESIS : 3D FIGURINE
(THE DEVELOPMENT AND CREATIVE
USE OF CERAMIC IN DESIGNER TOY)**

DESIGN BY CHUN HIM CHOI



Abstract

The world of contemporary art and plastic toys seemingly have more in common than one would think. As strange as it sounds, designer toys and sofubi(japanese vinyl) in the japanese toy market have crossed over to the realm of modern art and are now being produced as high priced ceramic sculptures. This fusion has recently become a reality due to high technology advancements in 3D modeling and printing. This thesis will not only explore what could be deemed a clash of genres and culture but also how plastic toys have merged into the art of ceramic sculptures.

Due to my asian upbringing and subsequent Western Education I was naturally curious about the impact and possible backlash this may have in the art community.

#01



- Metallic Gold Glazed
- Earthenware
- H37cm L16cm W14cm



#02



- Metallic Gold Glazed
- Metallic Black Glazed
- Earthenware
- H40cm L16cm W14cm



#03



- Metallic Black Glazed
- Earthenware
- H38cm L16cm W14cm



#04



- Metallic Green Glazed
- Metallic Black Glazed
- Earthenware
- H40cm L16cm W14cm



#05



- Metallic Gold Glazed
- Metallic Black Glazed
- Earthenware
- H40cm L16cm W14cm



#06



- Metallic Black Glazed
- Earthenware
- H40cm L16cm W14cm



#07



- Metallic Gold Glazed
- Metallic Black Glazed
- Earthenware
- H40cm L16cm W16cm



#08



- White Glazed

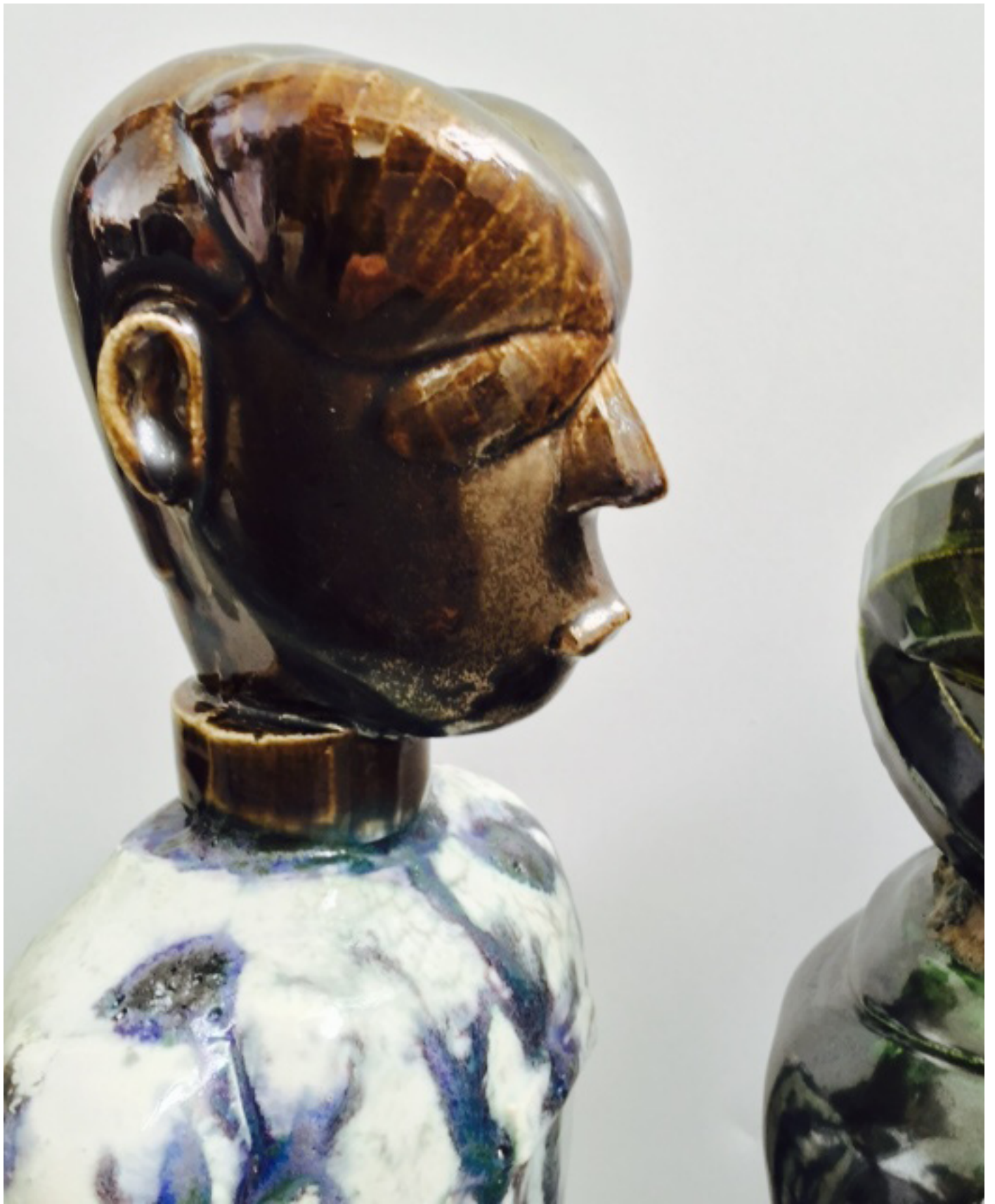
- Blue and Green Glazed

- Earthenware

- H37cm L16cm W14cm







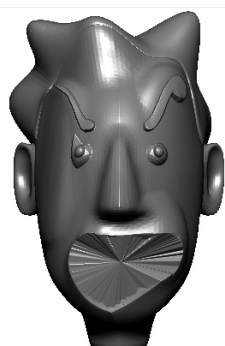
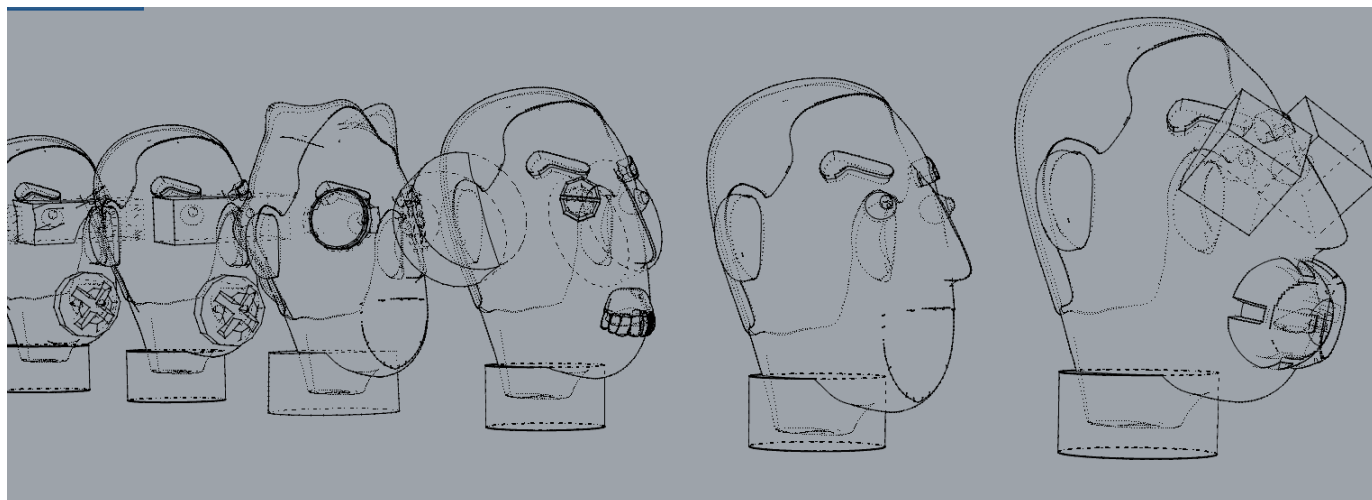




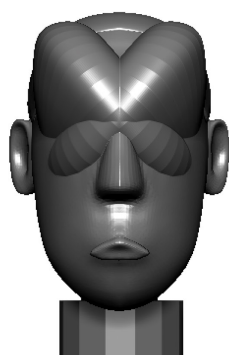




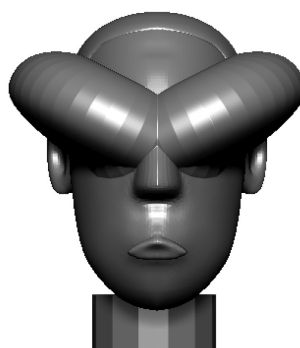
HEAD



01



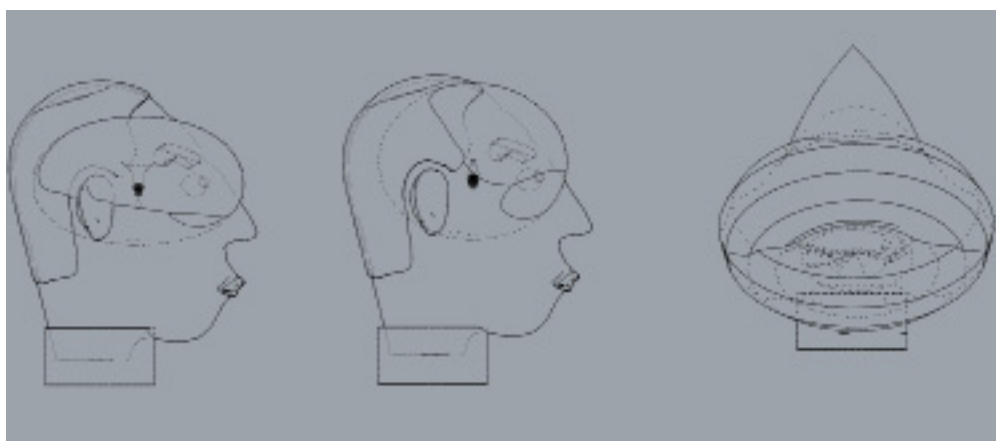
02

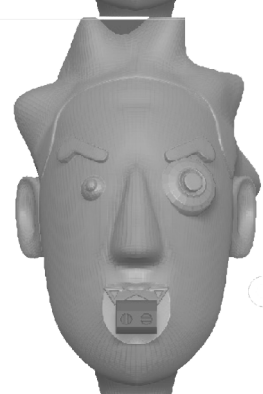
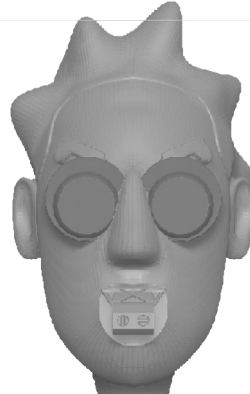
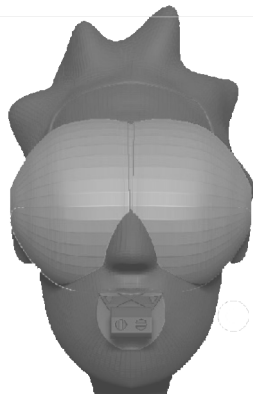
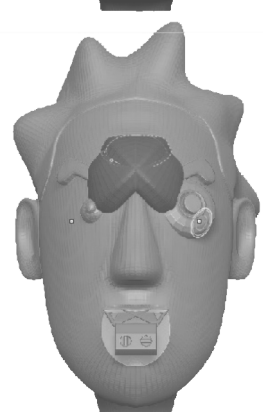
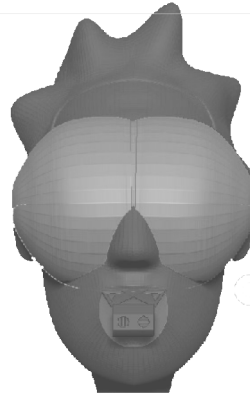
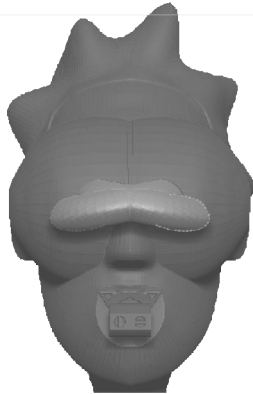
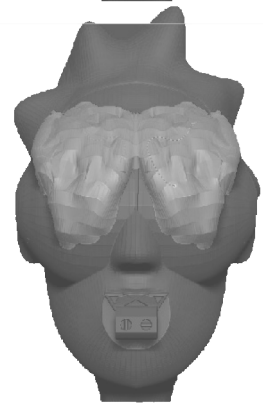
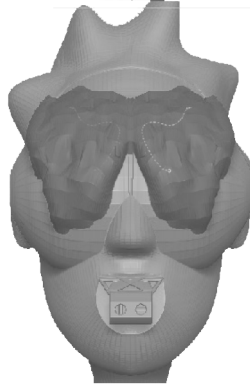
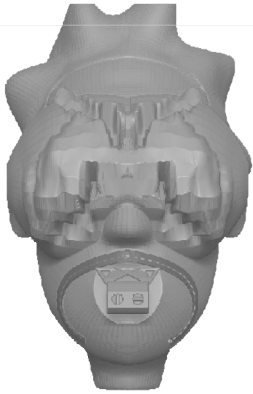
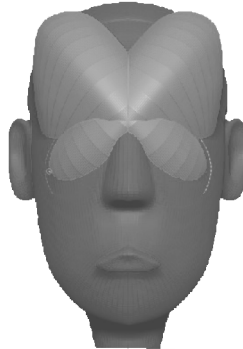
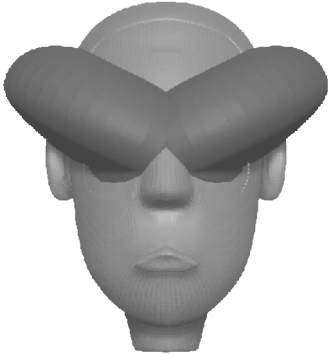
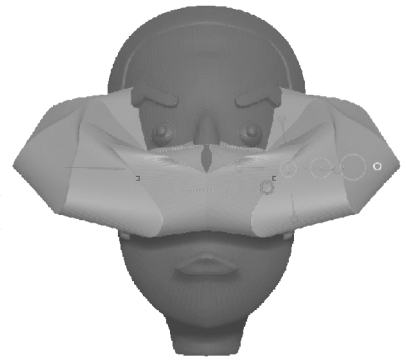
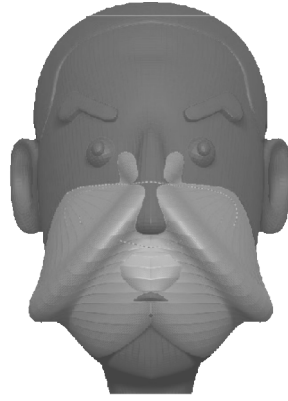
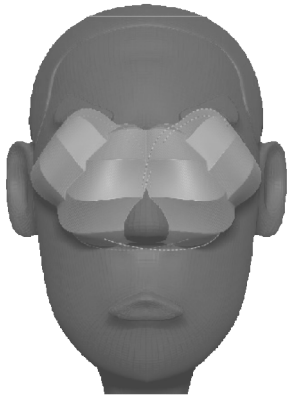


03

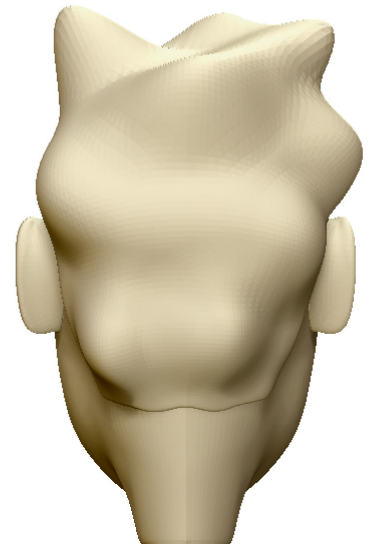


04

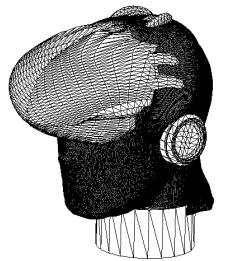
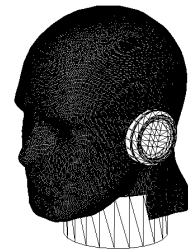
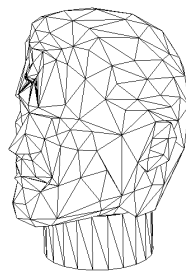
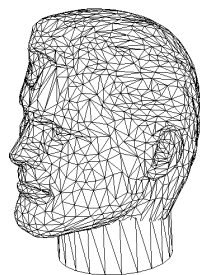
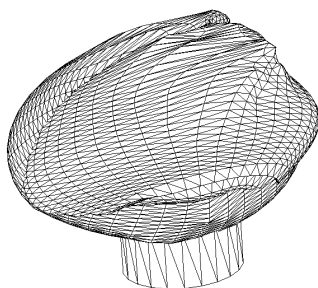
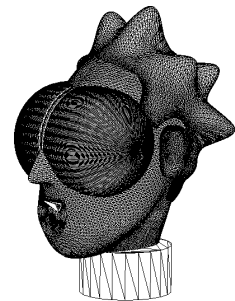
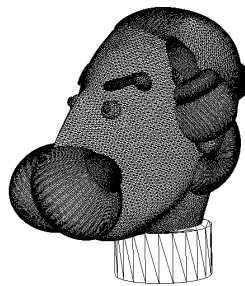
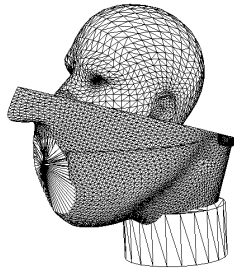
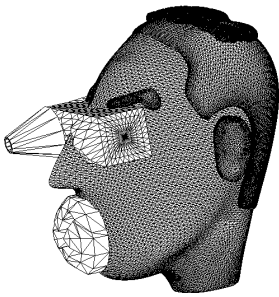
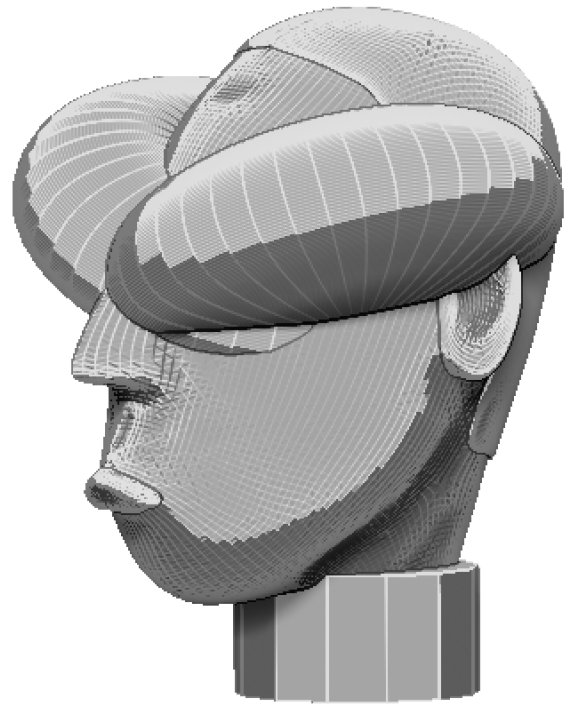
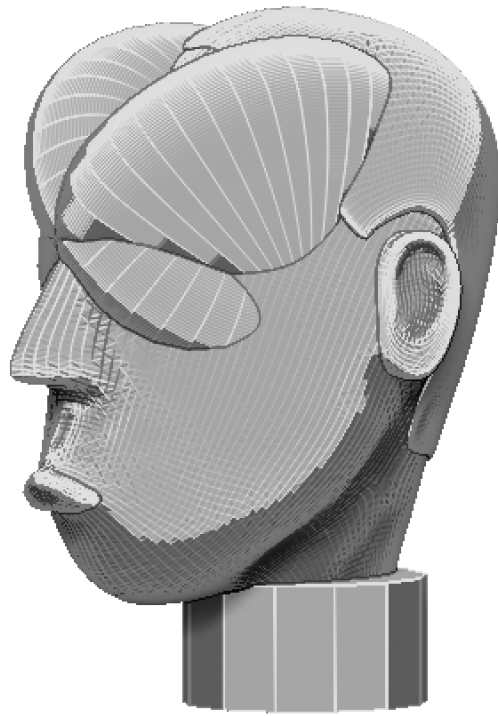


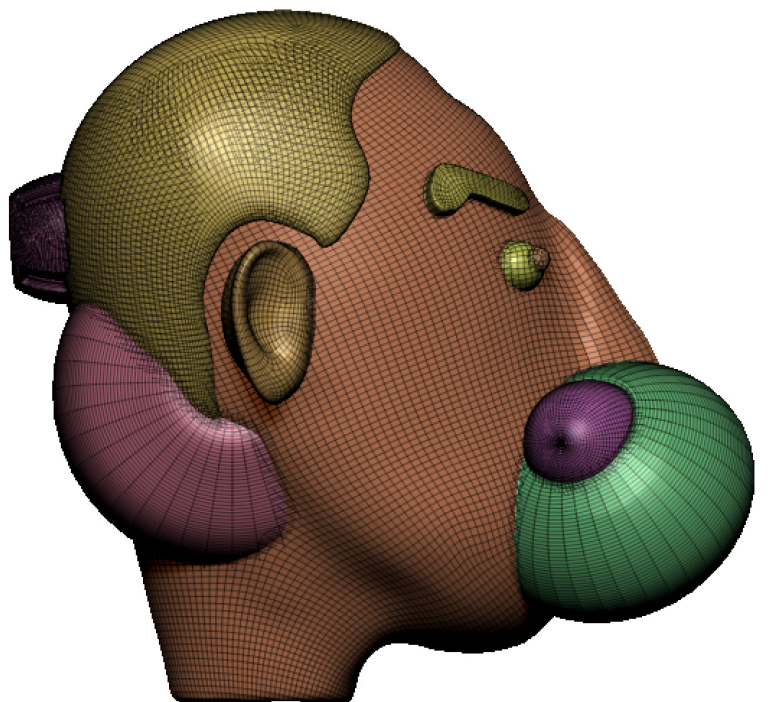
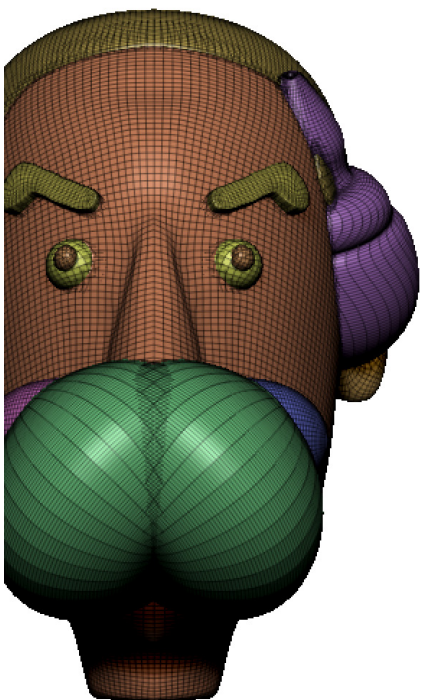
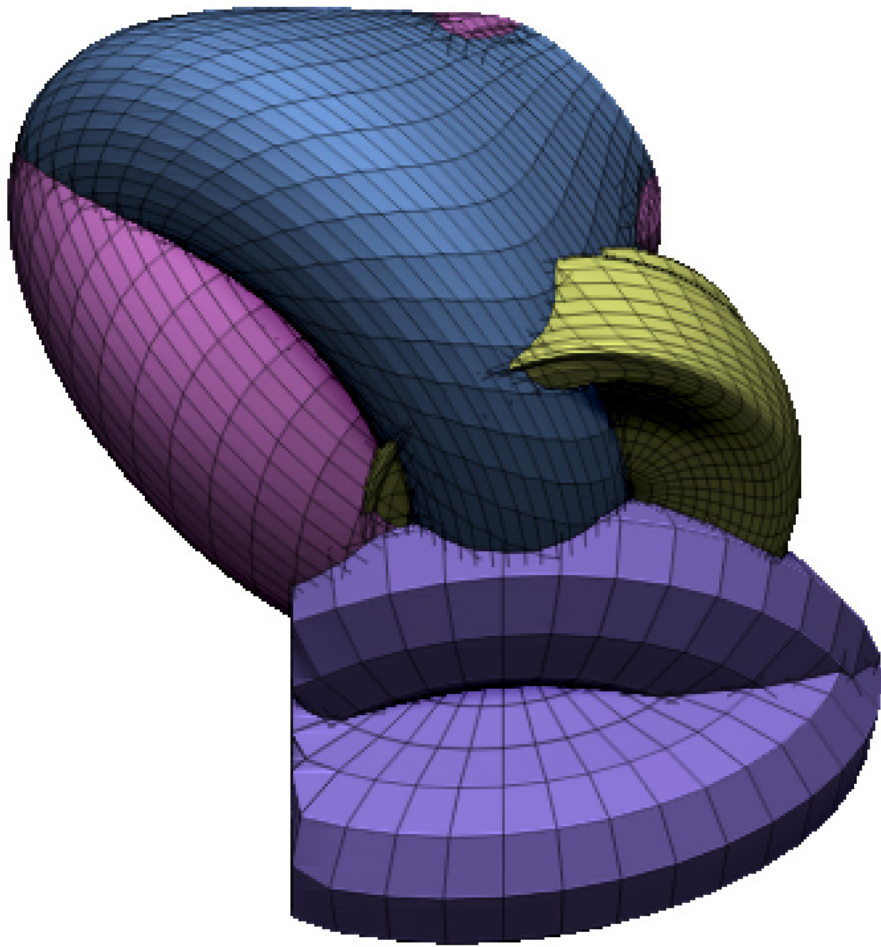


HEAD 01

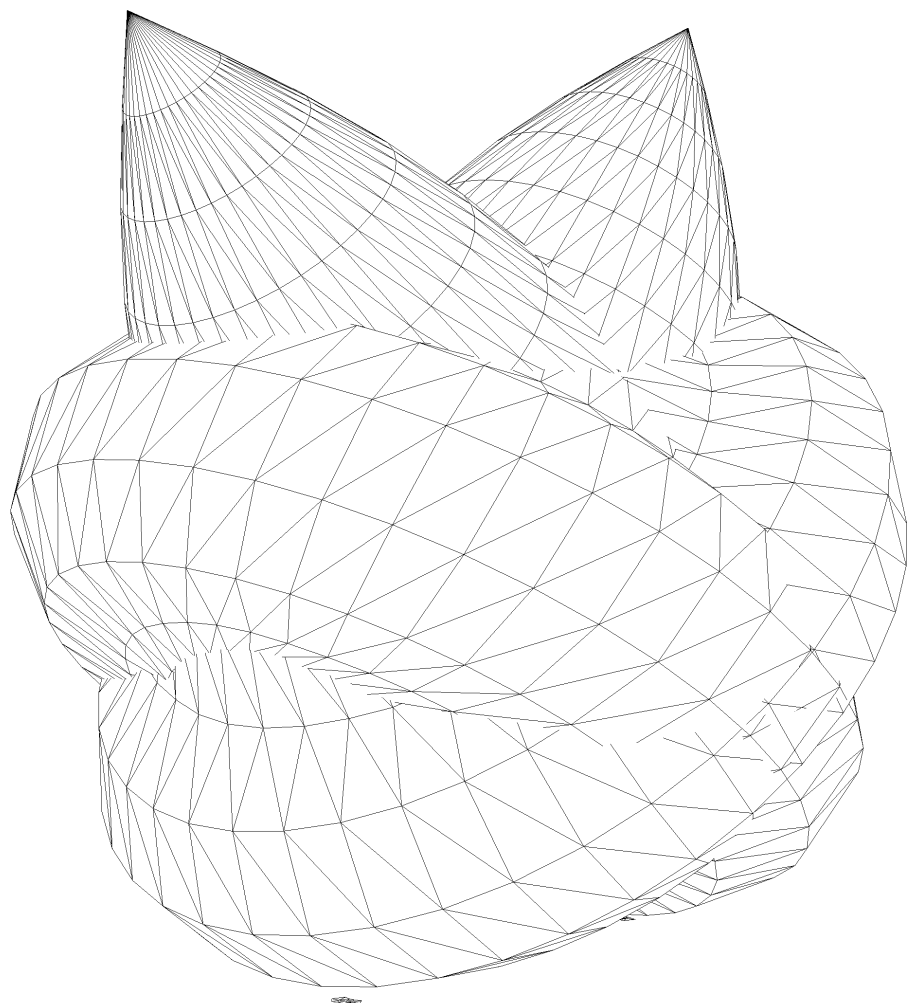
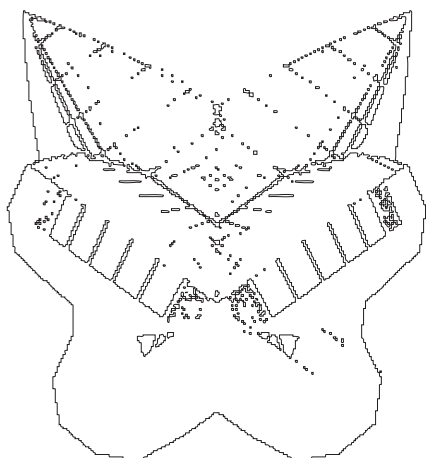
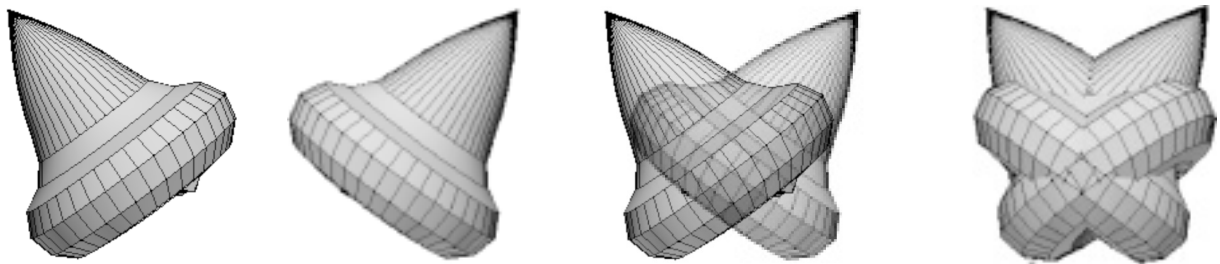
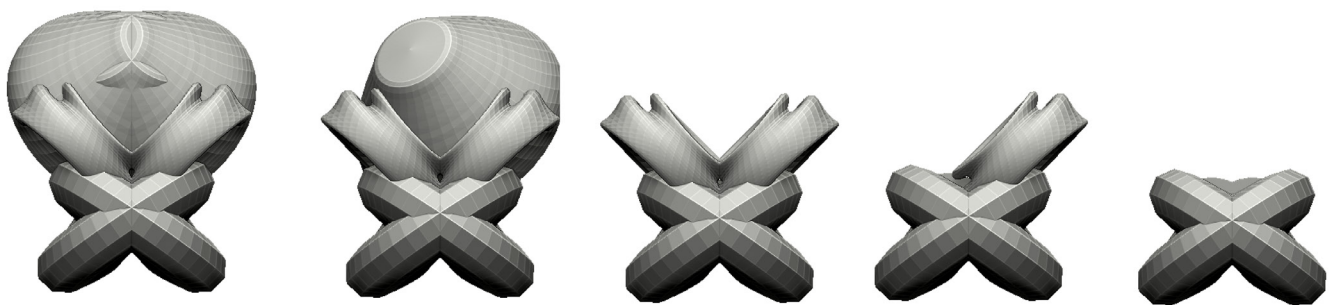


HEAD 02/03





HEAD 04



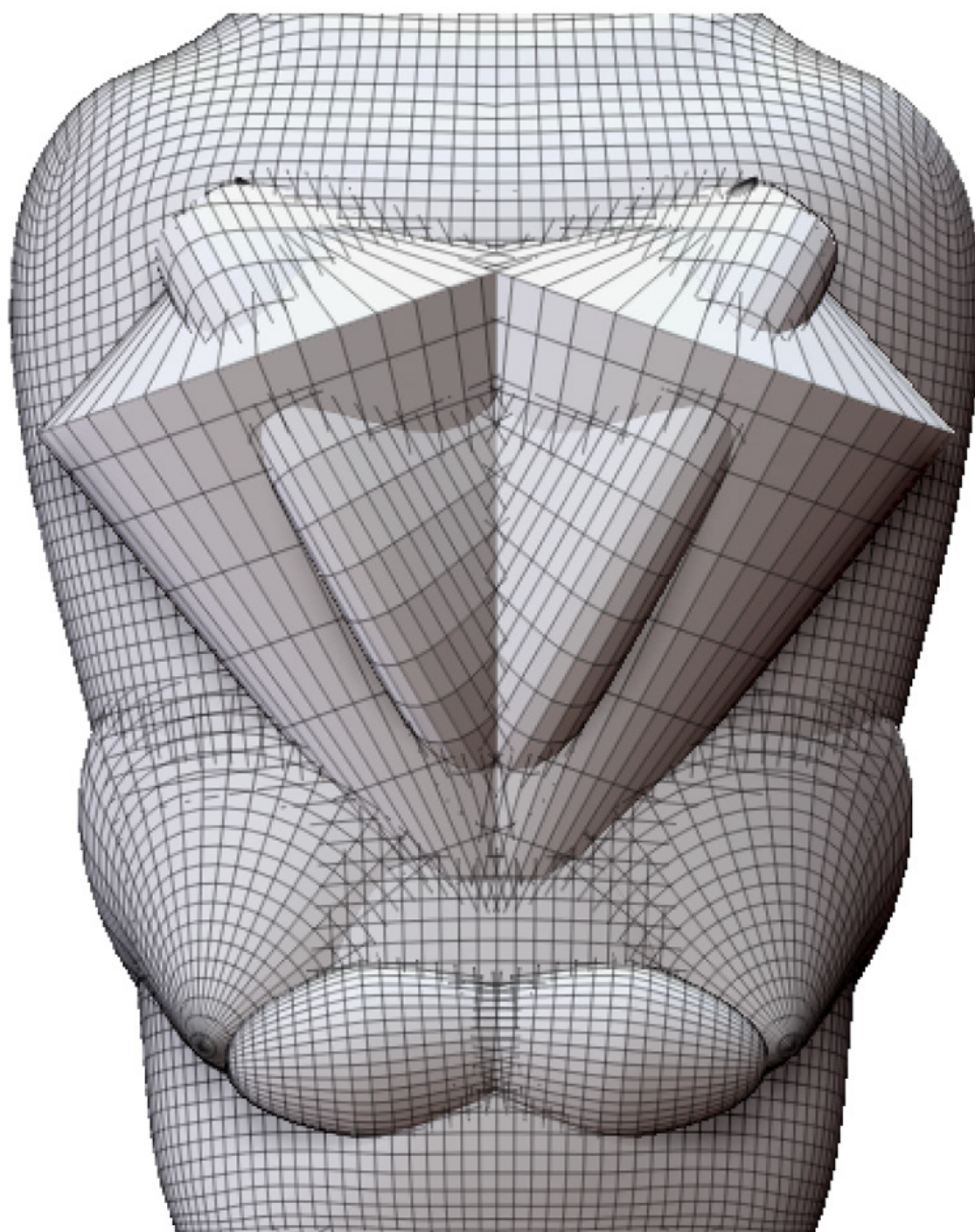
BODY 01



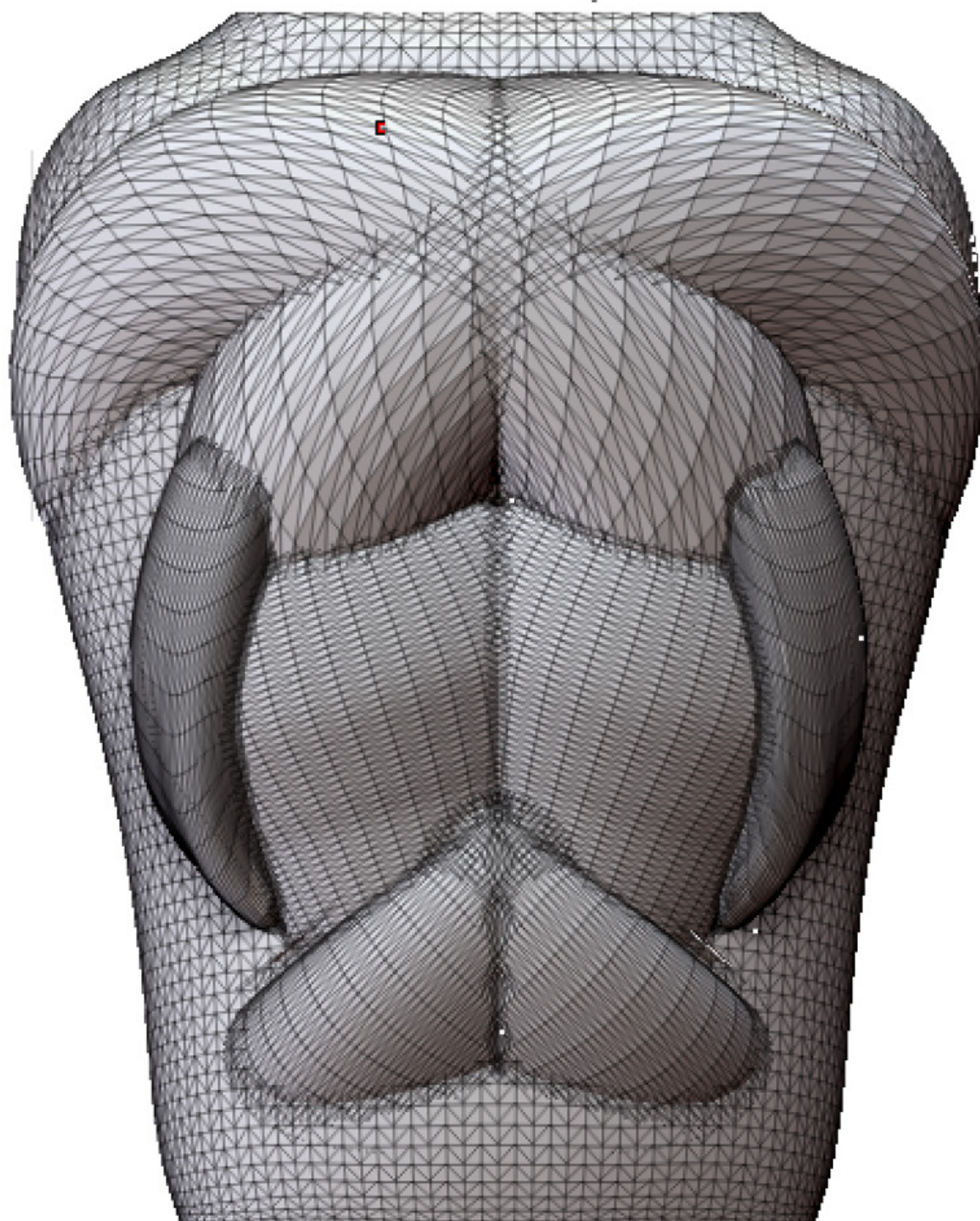
BODY 02



BODY 03



BODY 04



BODY 05

