

A CONTEMPORARY FISH MARKET

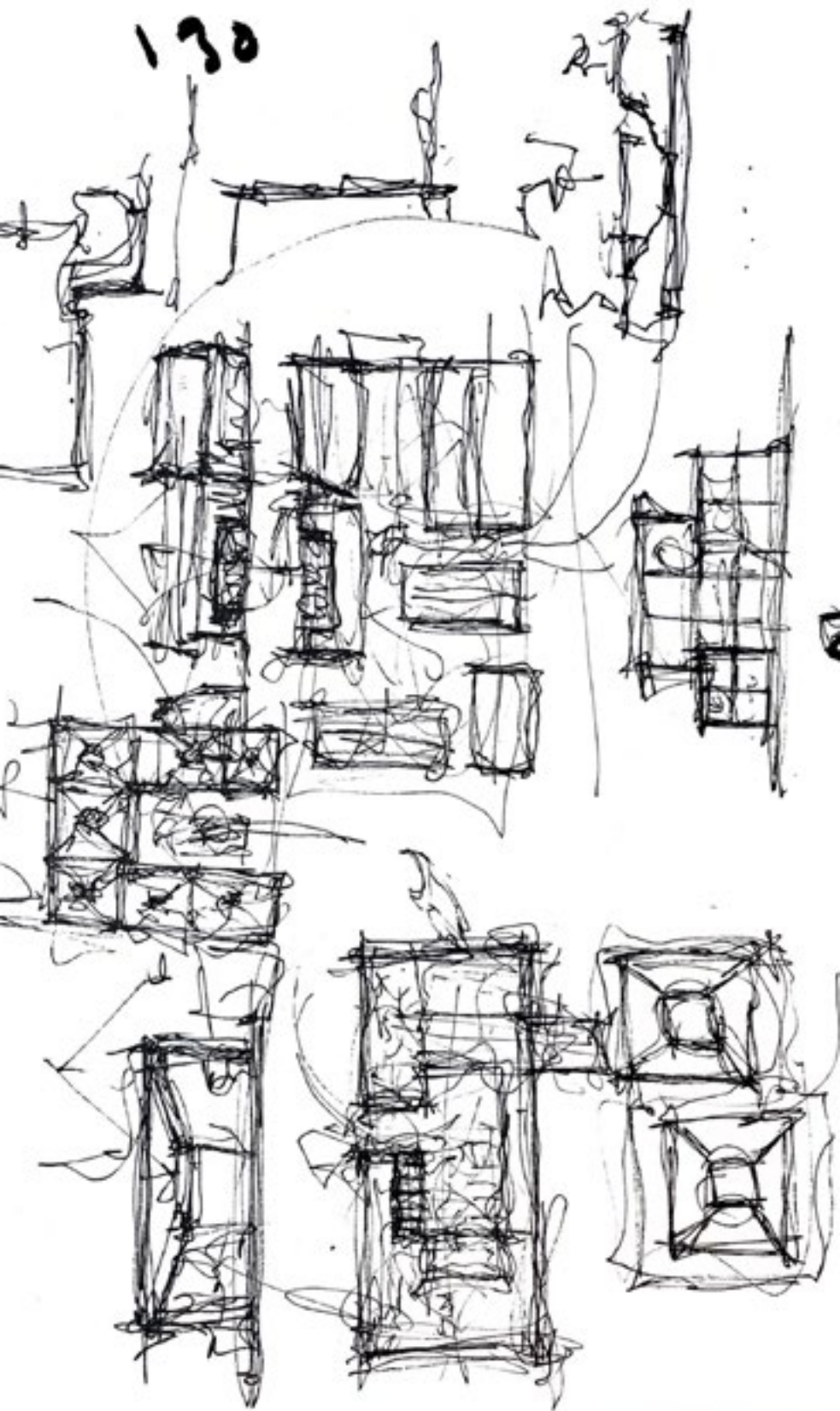
PROCESS, DRAWINGS AND ITERATIONS

ORIENTKAJ: A CONTEMPORARY FISH MARKET



ALEXANDER MIHEL 170320
AMIRA MATLAND 160367

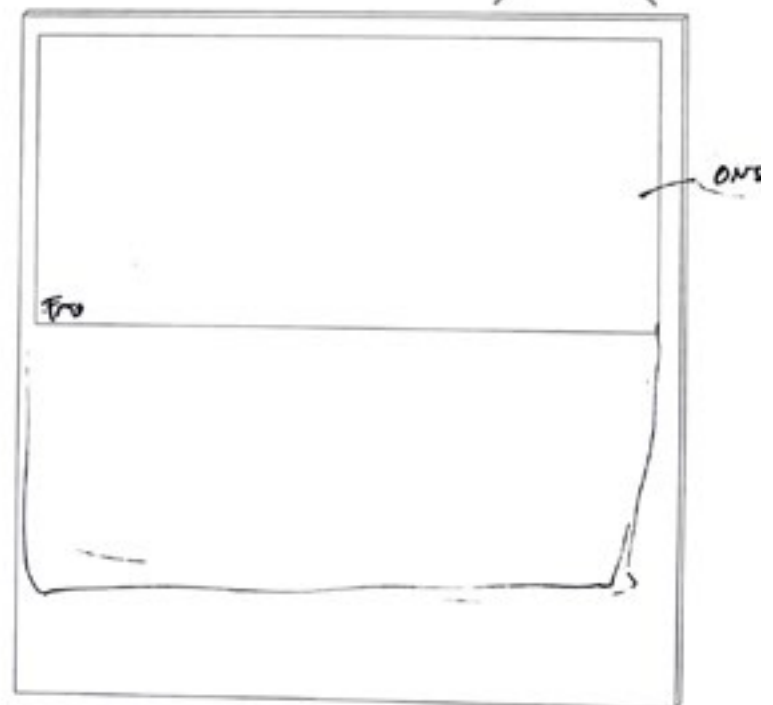
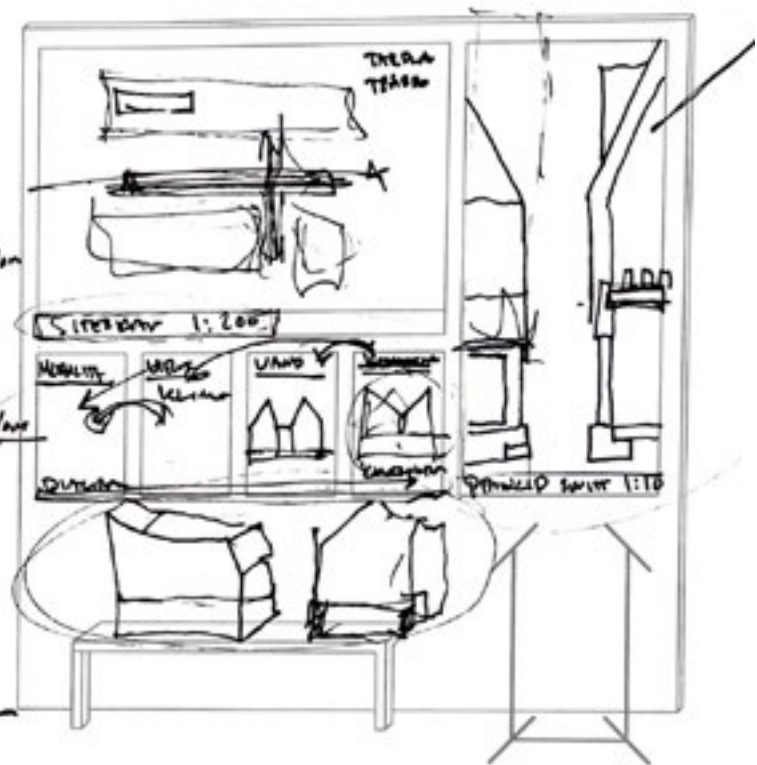
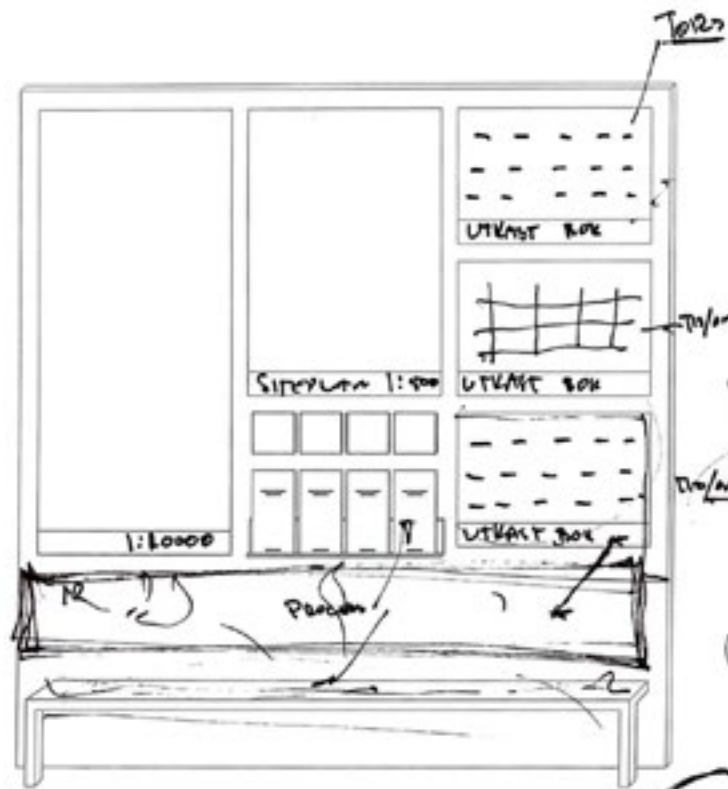
SPATIAL DESIGN 2023
DET KONGELIGE AKADEMI
ARKITEKTUR DESIGN KONSERVERING

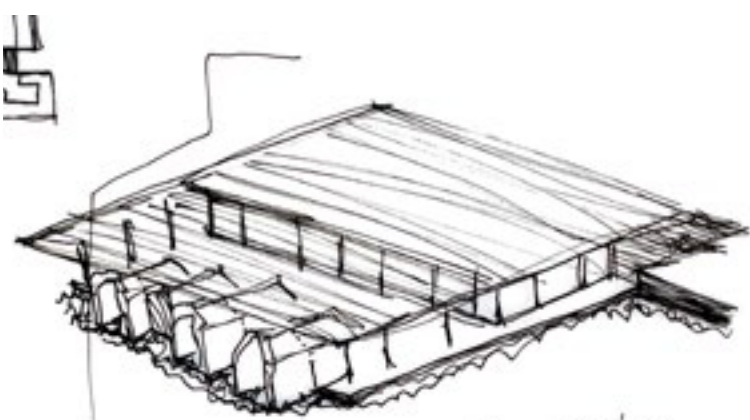


IDENTIFYING A FORM

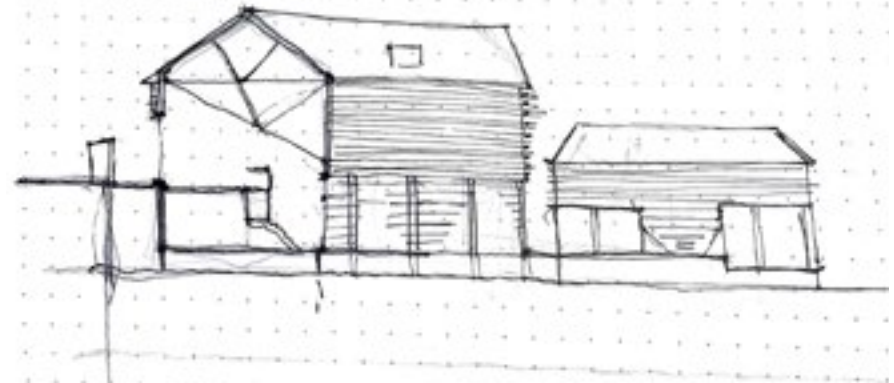
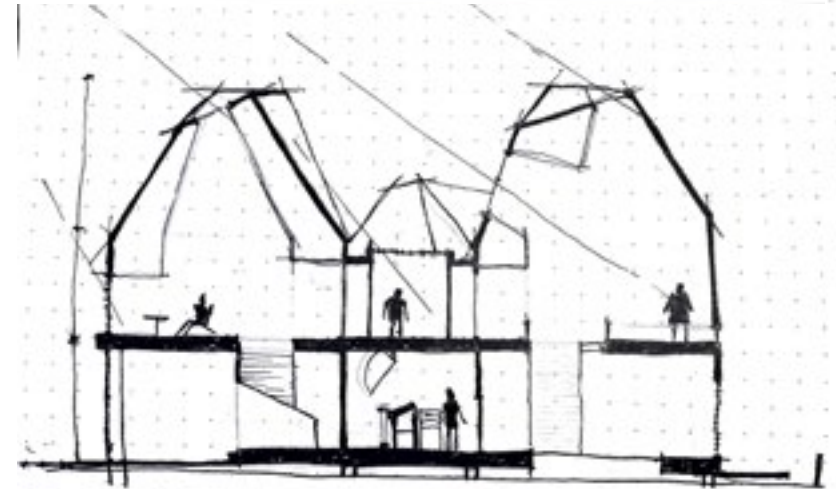
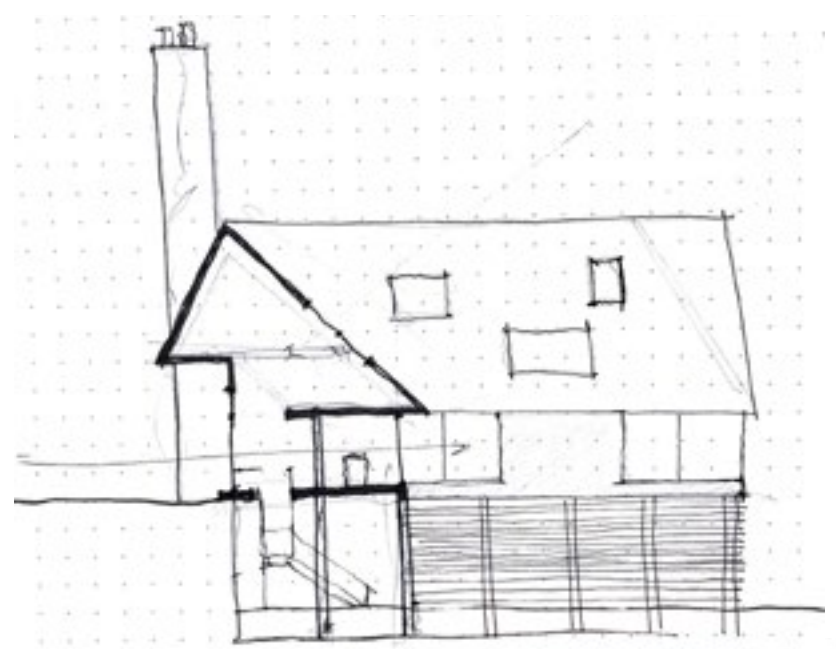
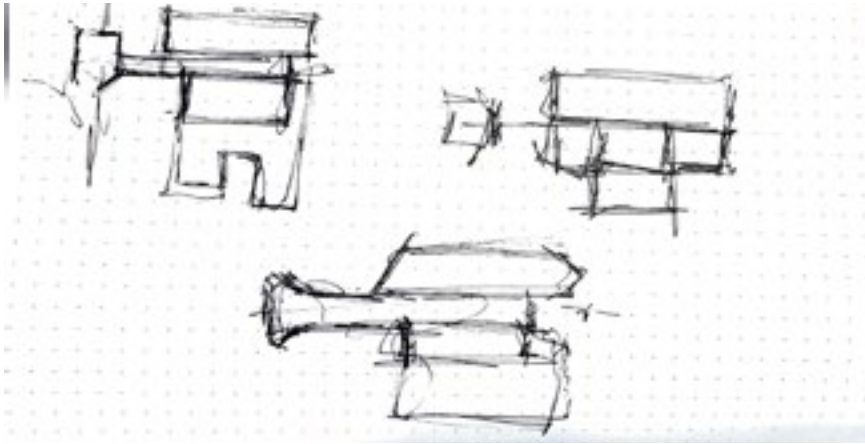
This book is the fourth part of our analysis, and can be read as the last of the four books. It is where we have collected our drawing and model process.

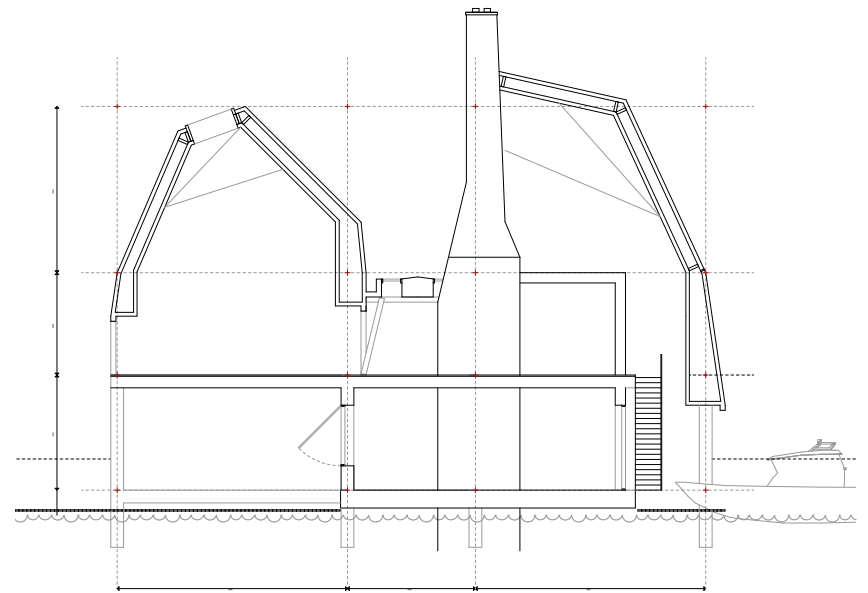
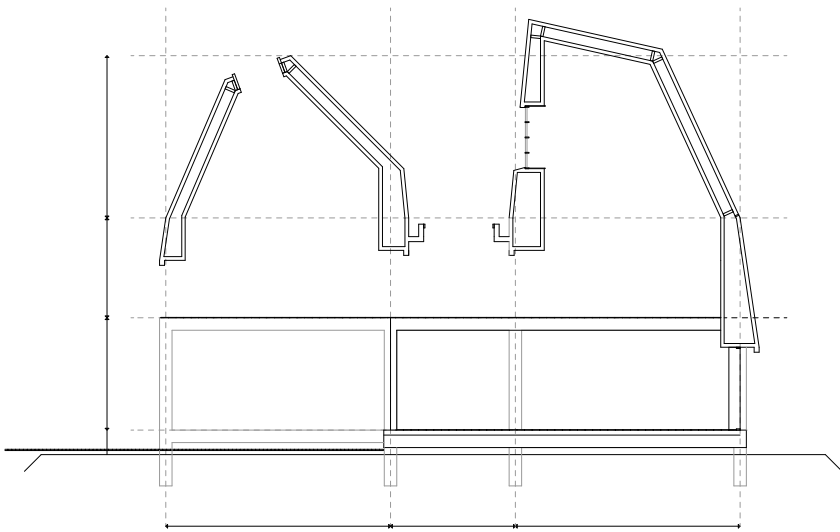
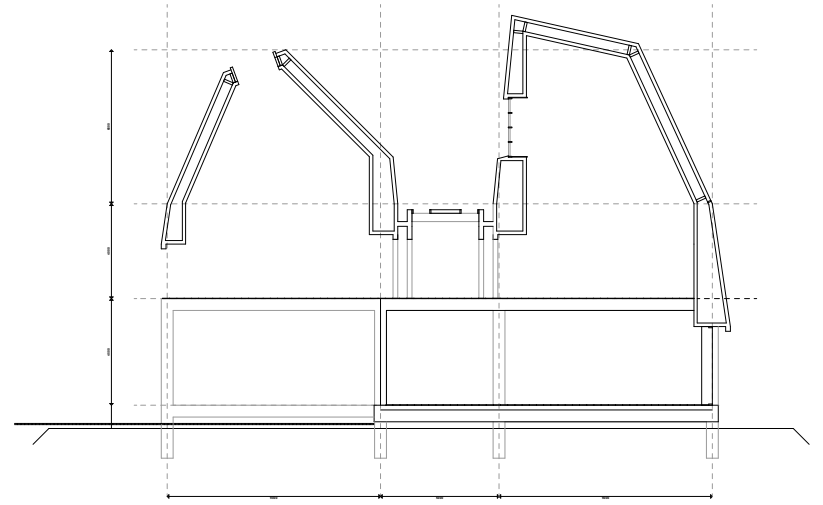
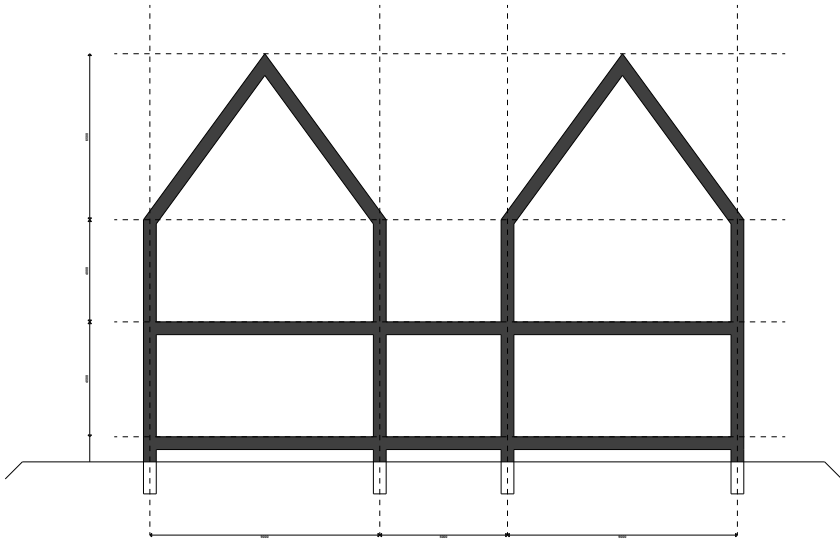
The book starts with the first sketches and evolves towards more finished shapes and models.

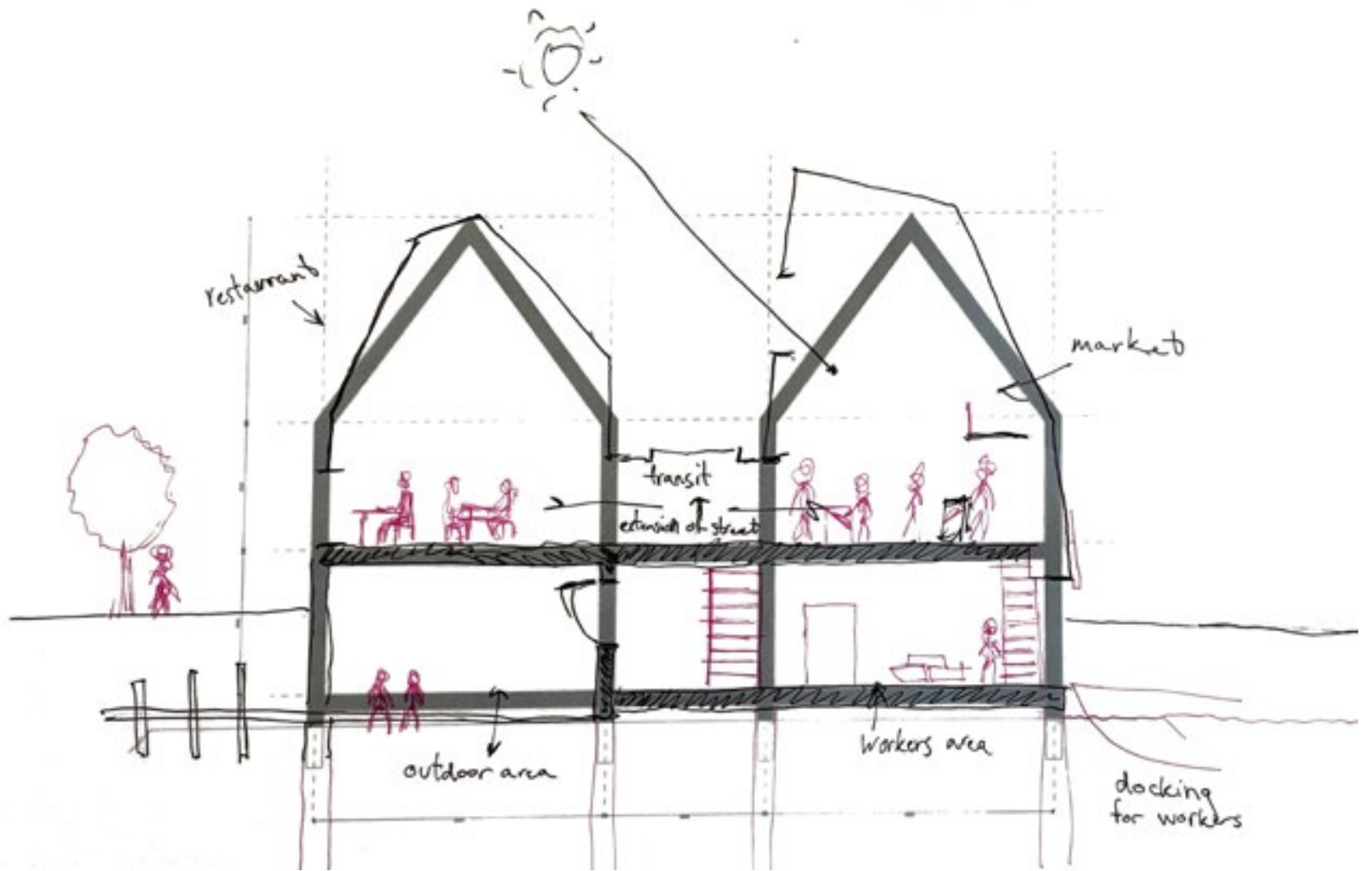


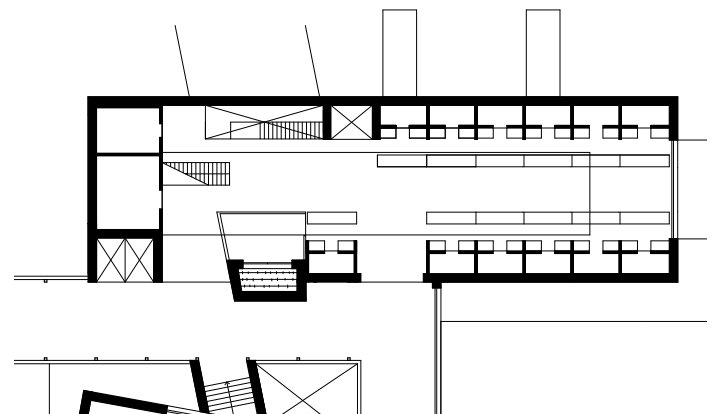
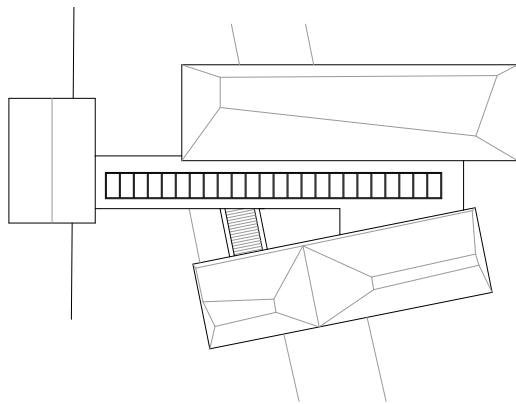
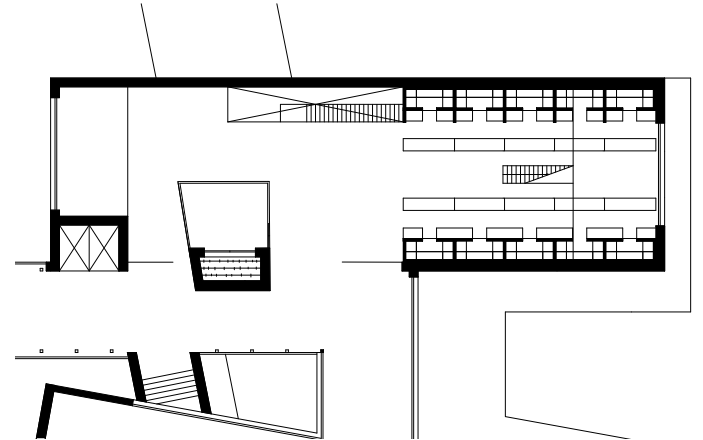
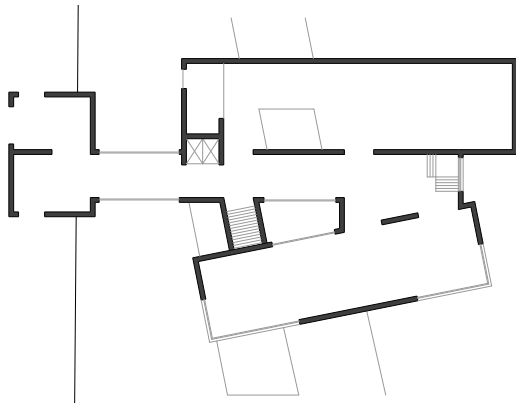
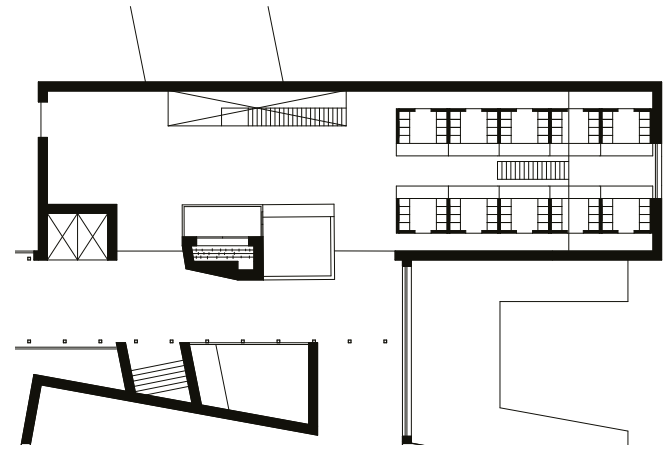
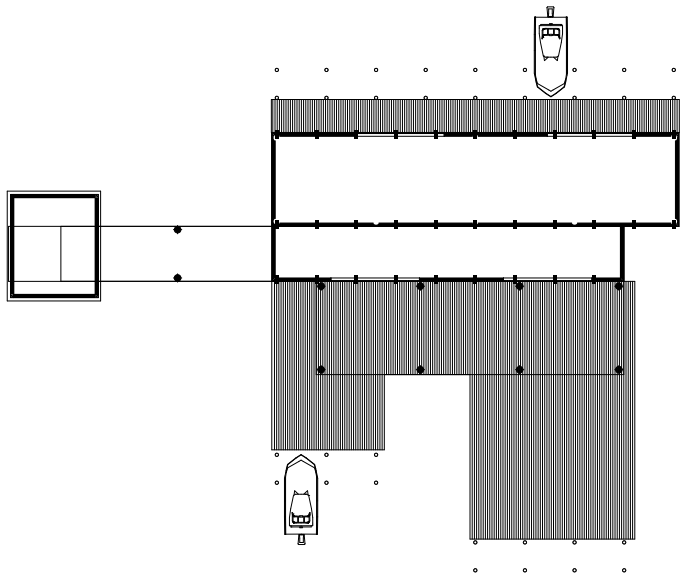


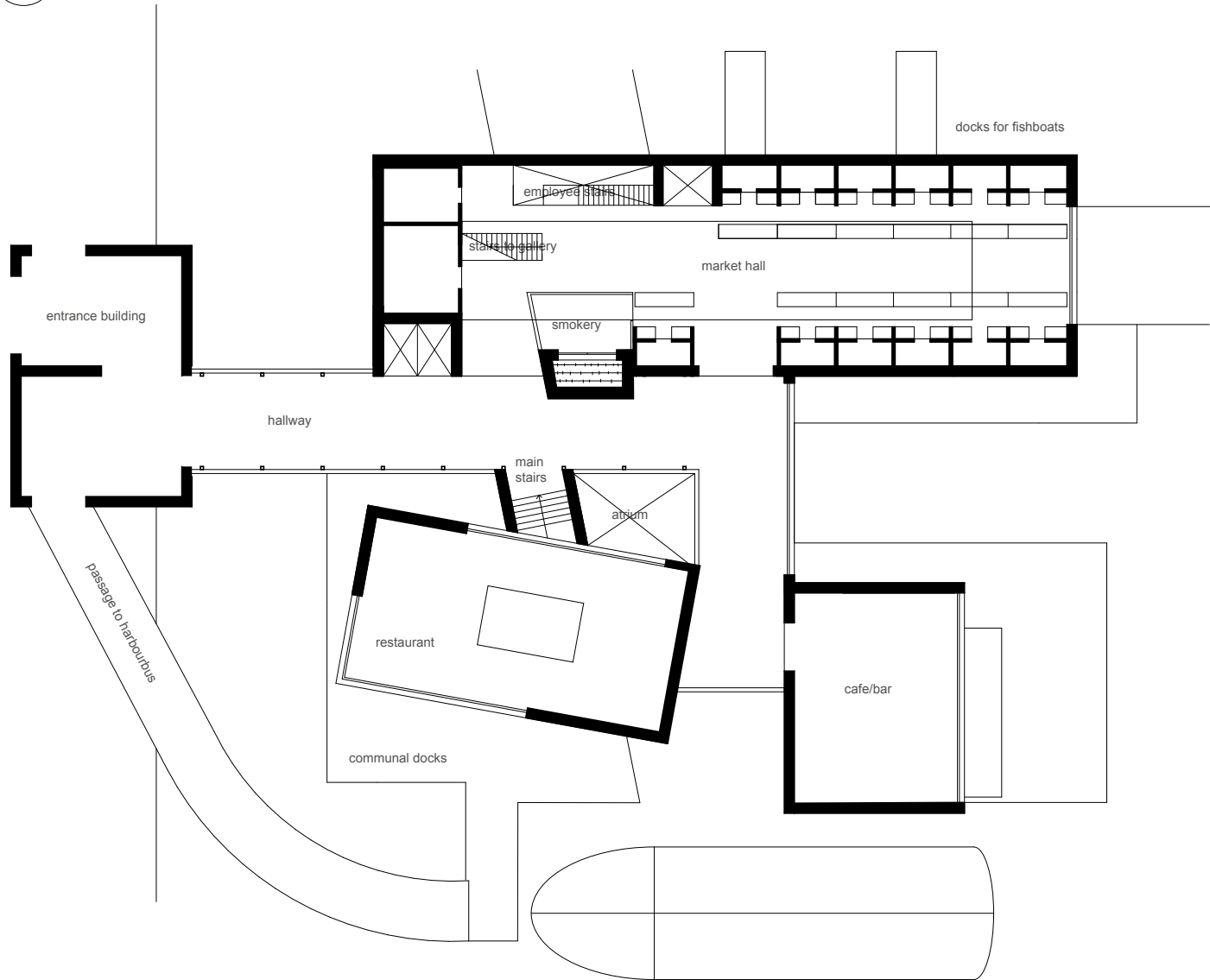
the meeting
of typologies
village to roof/hall

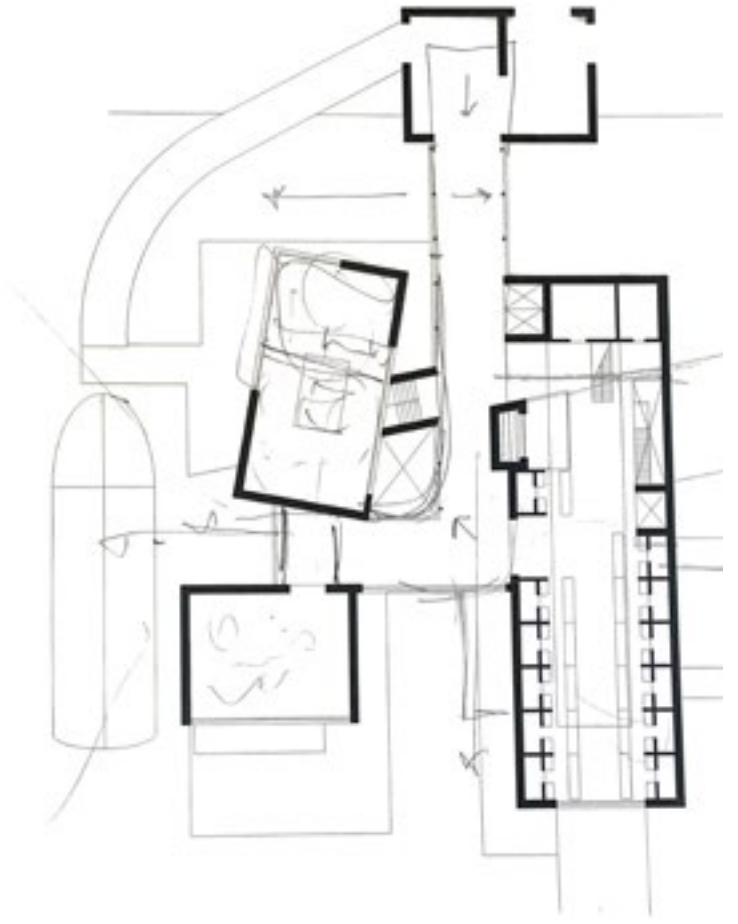
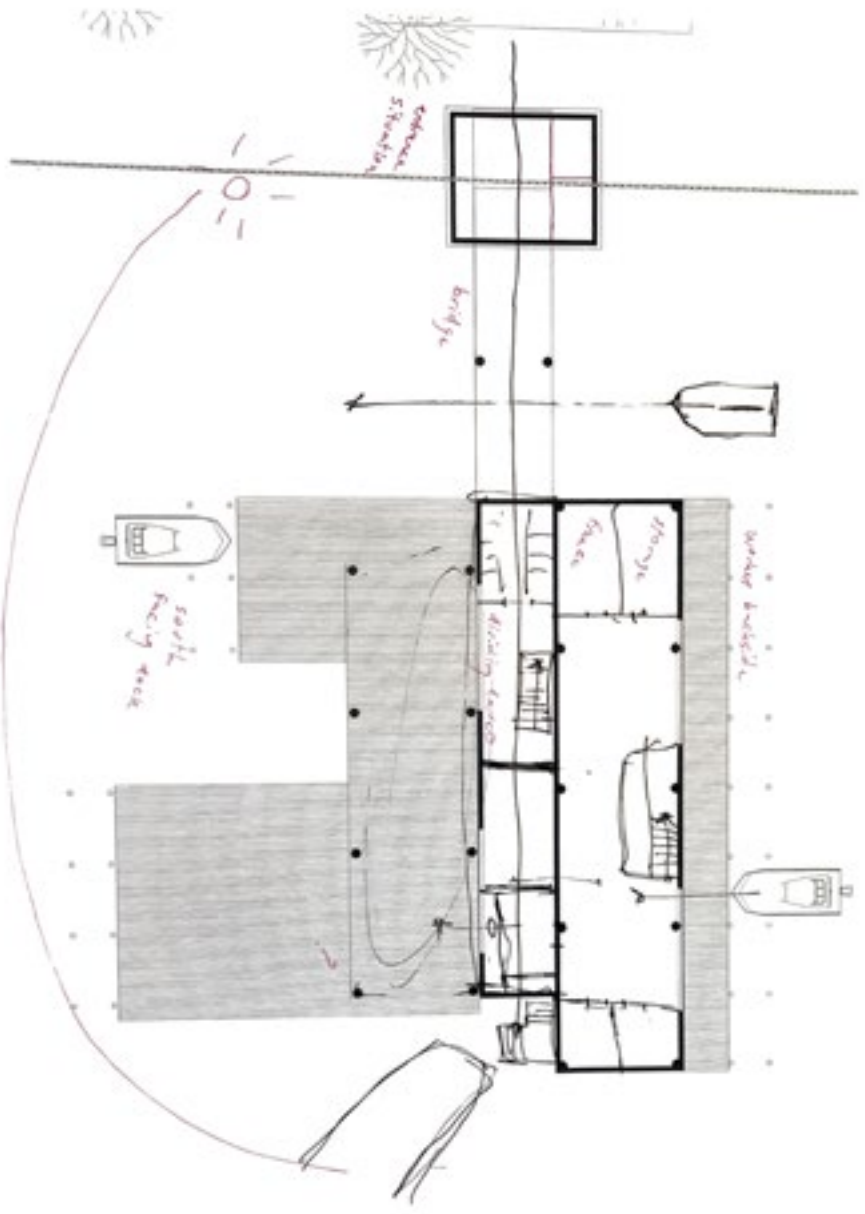


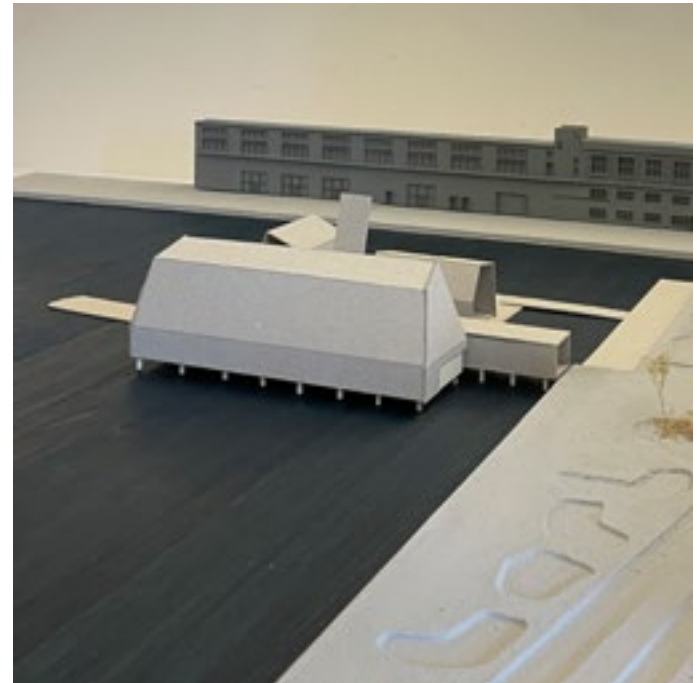
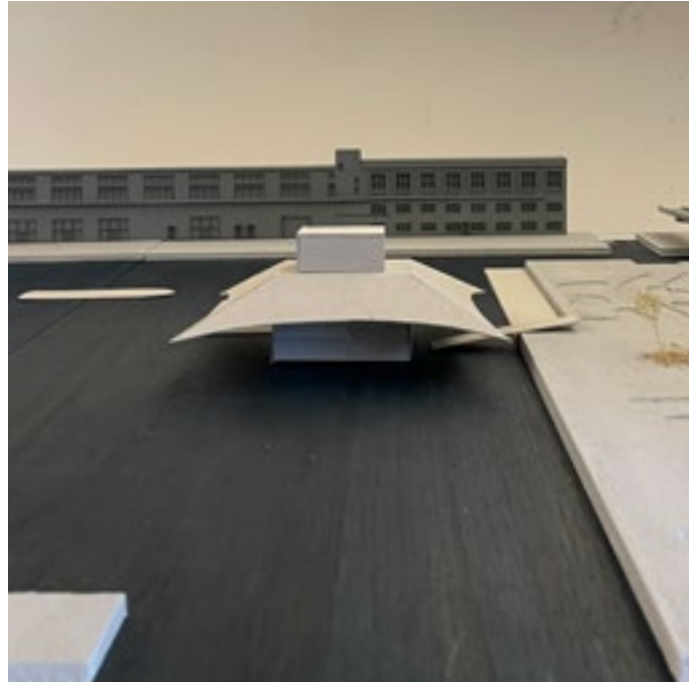
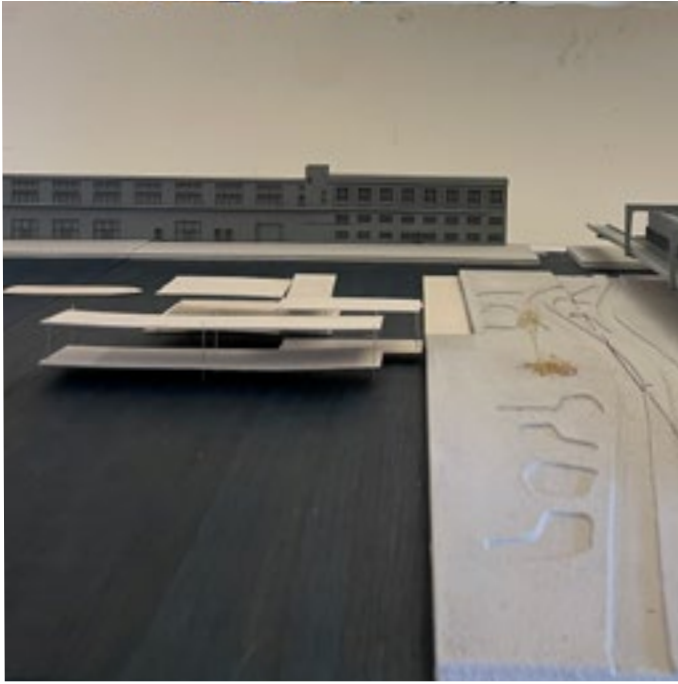


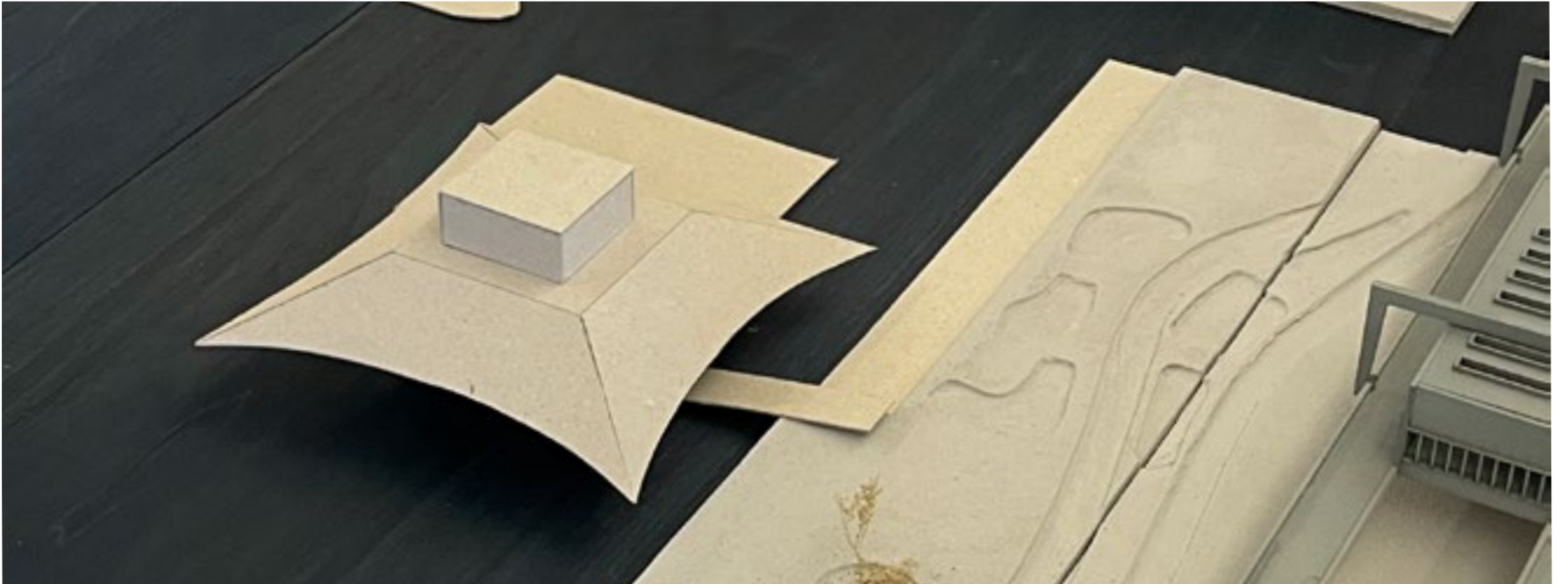
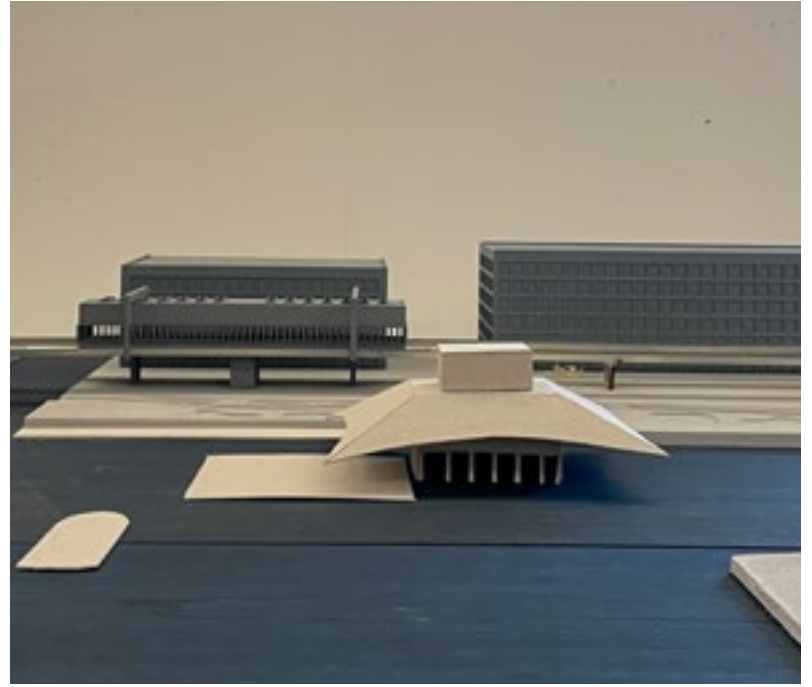
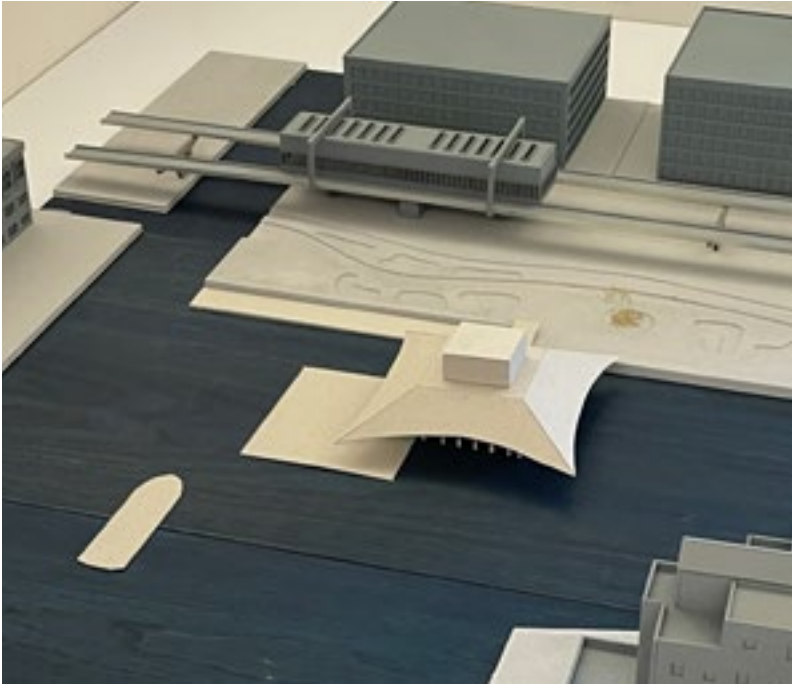


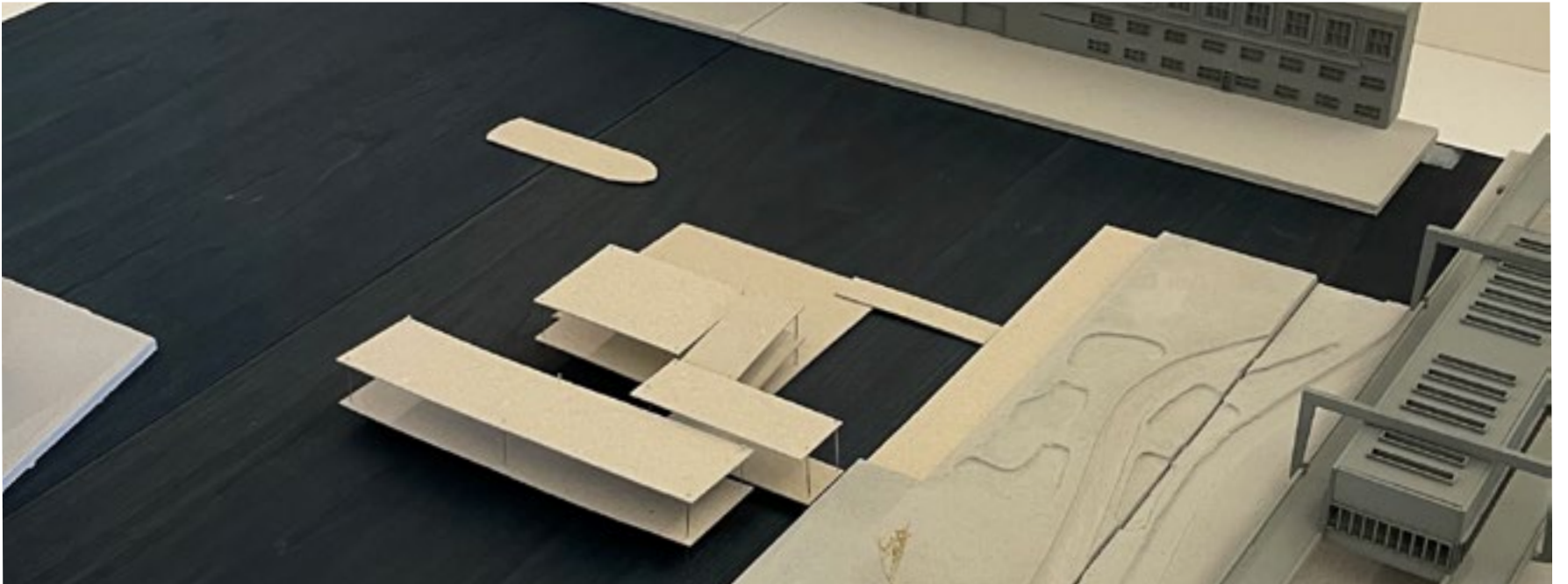
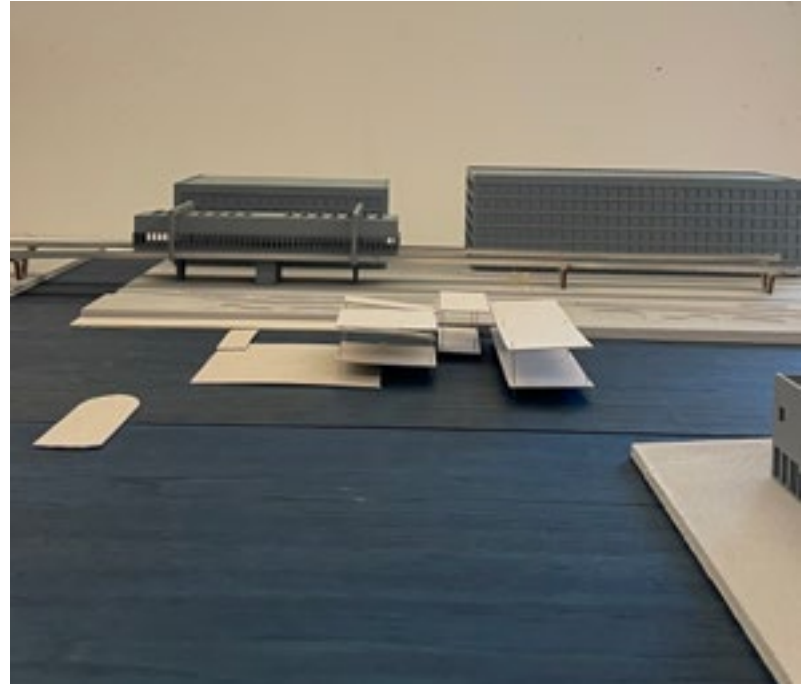
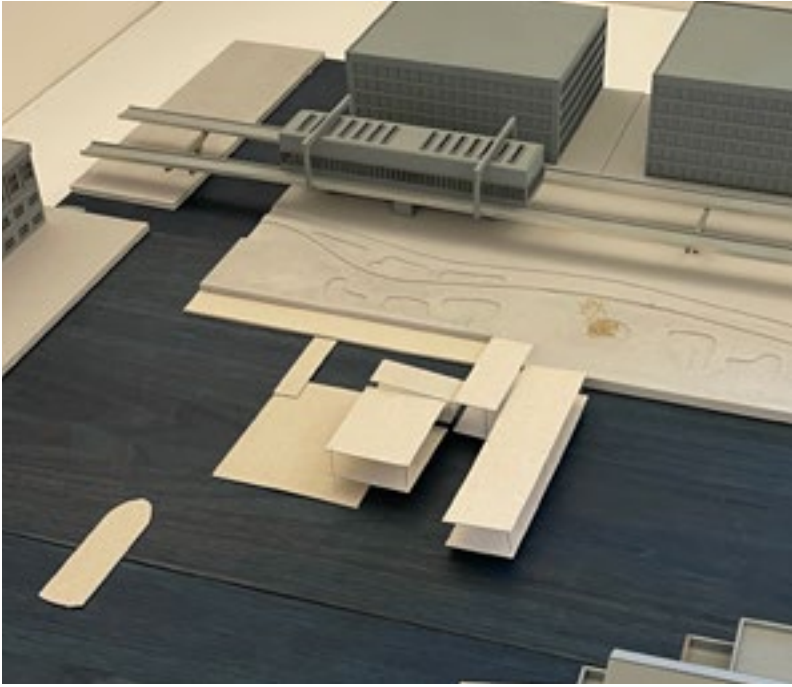


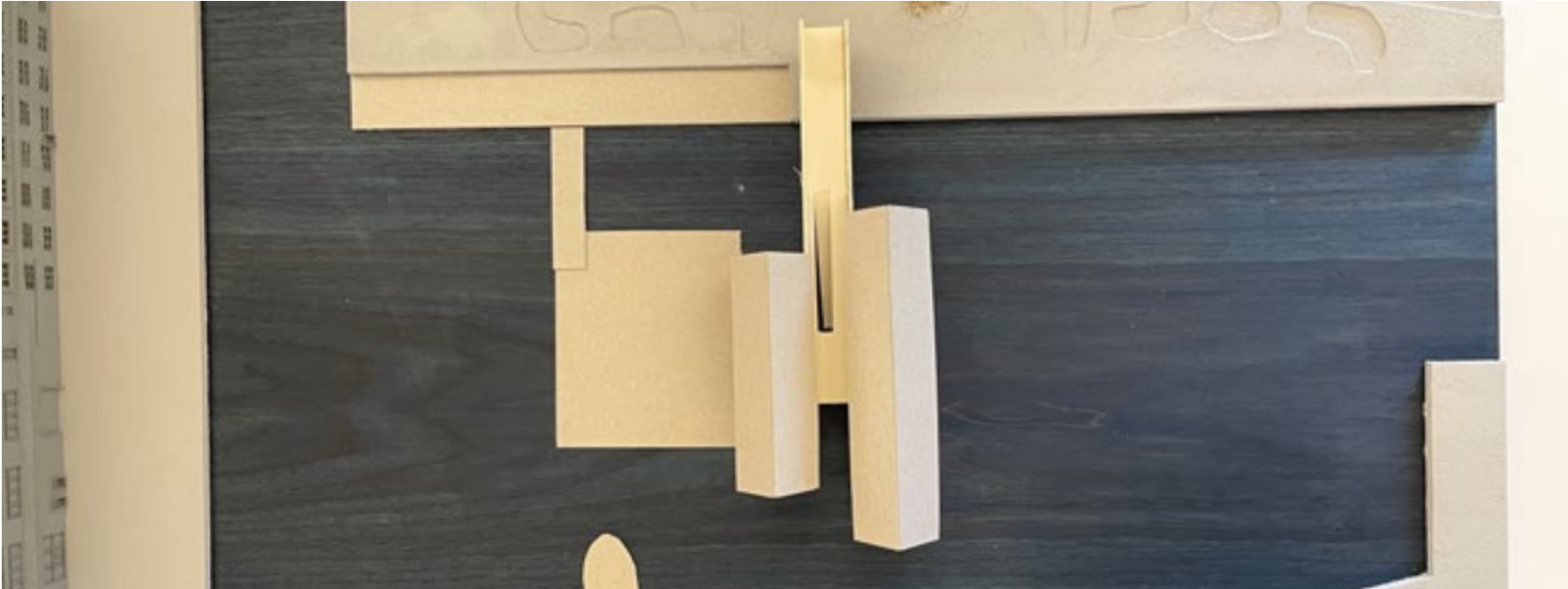
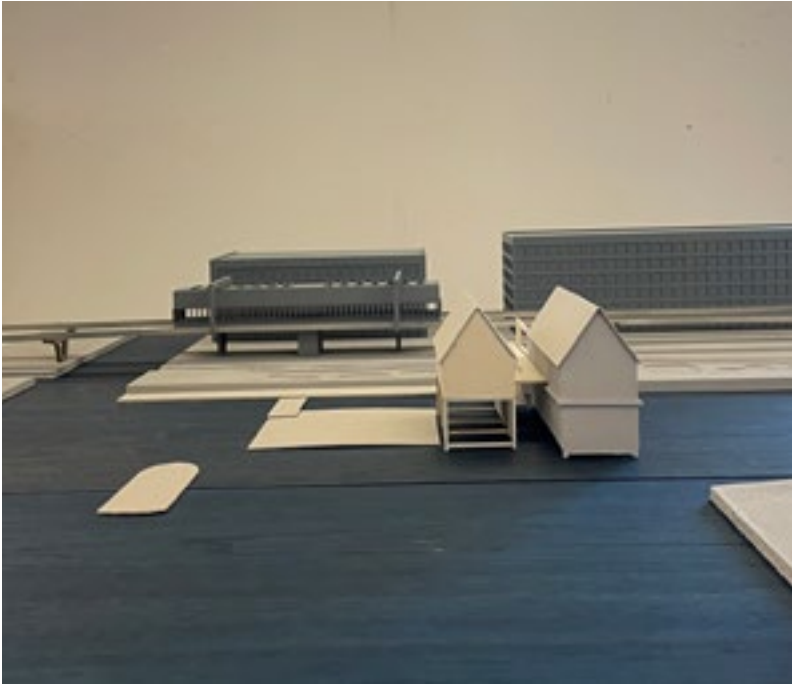
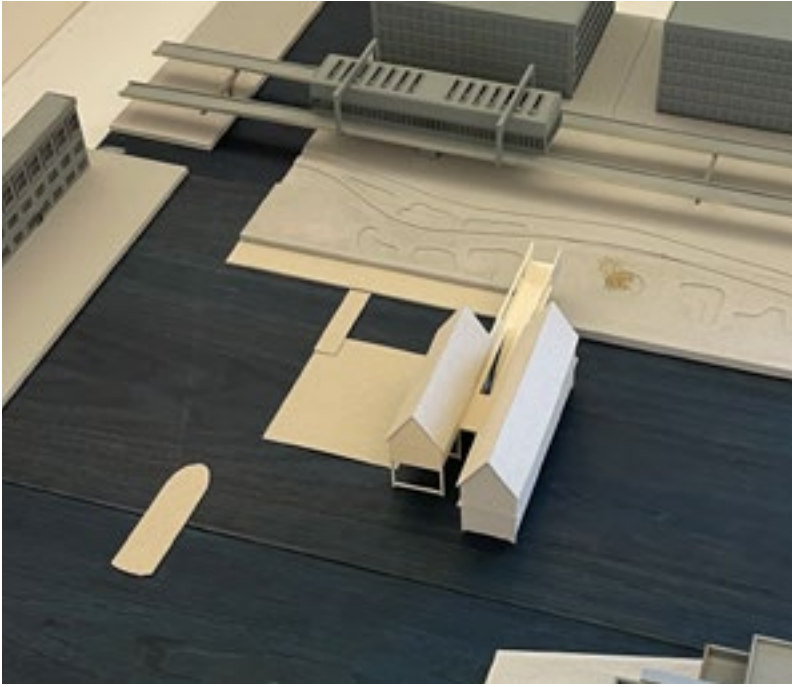


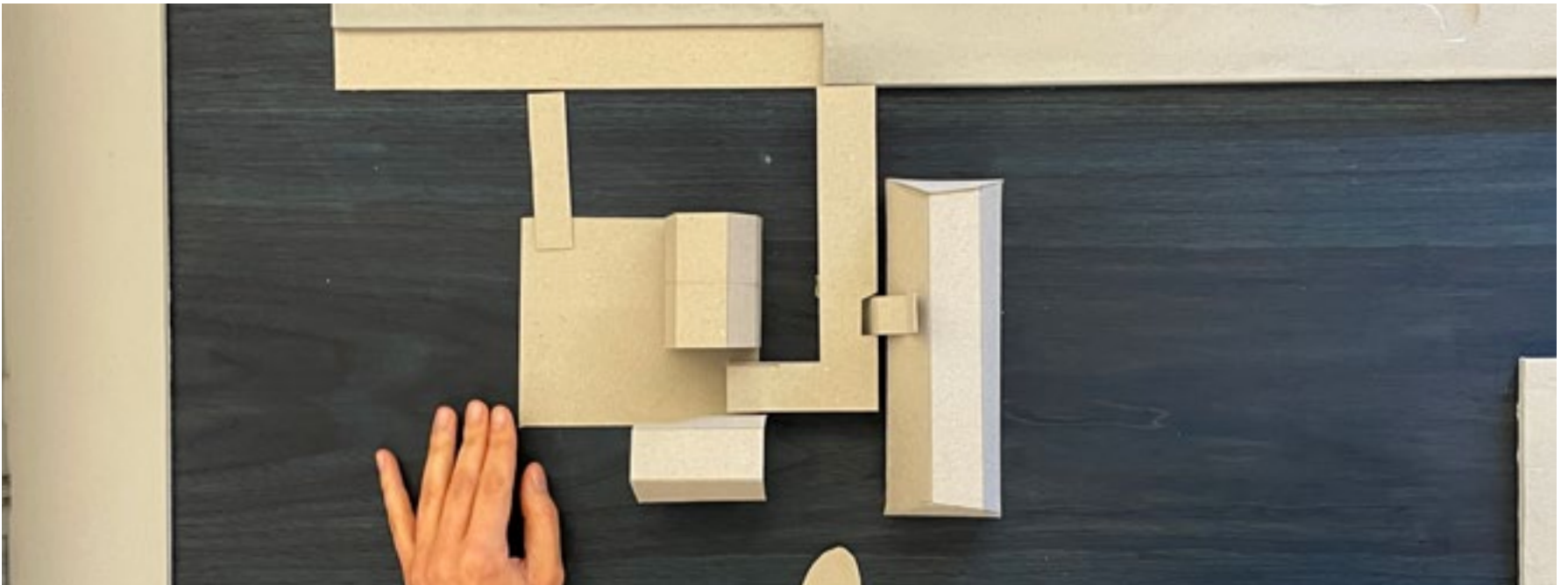
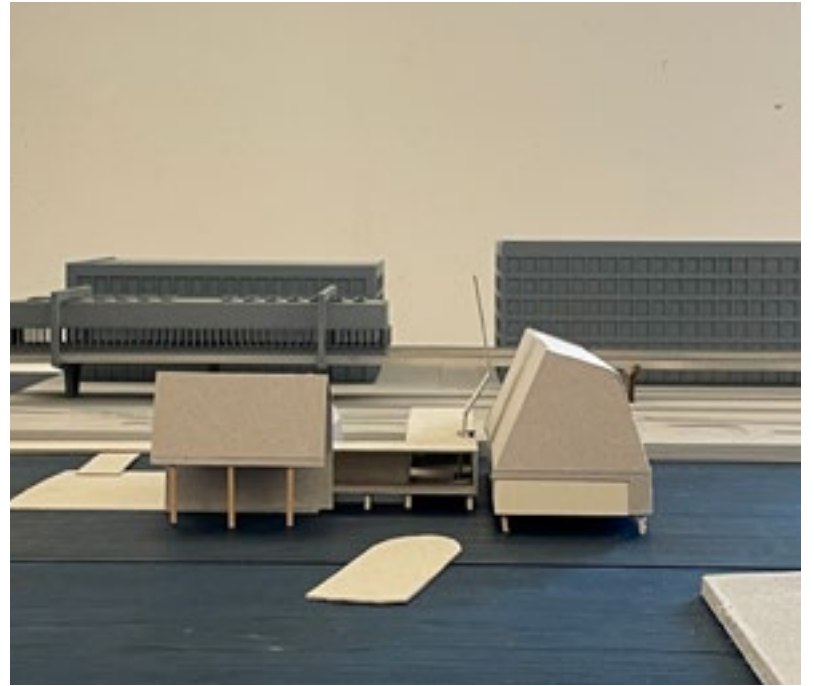
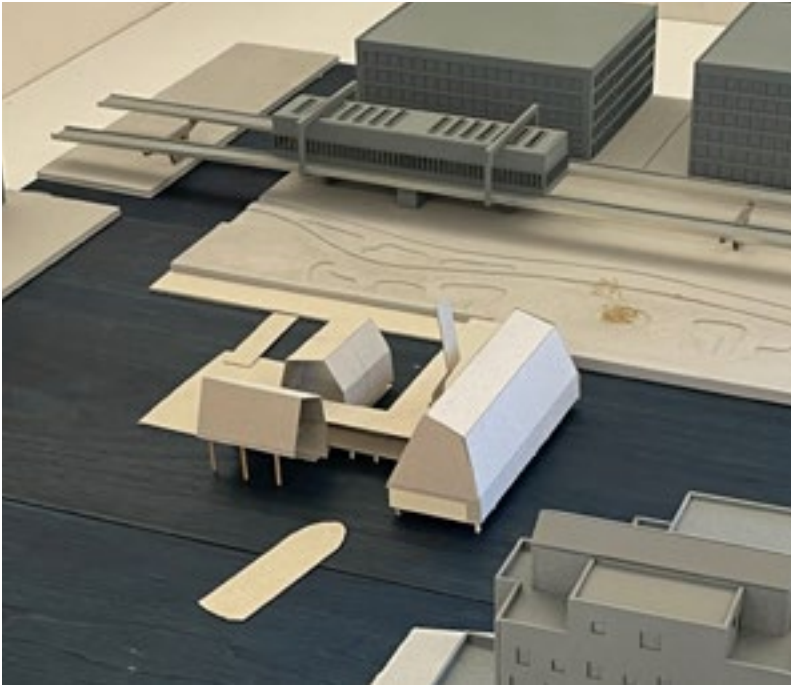


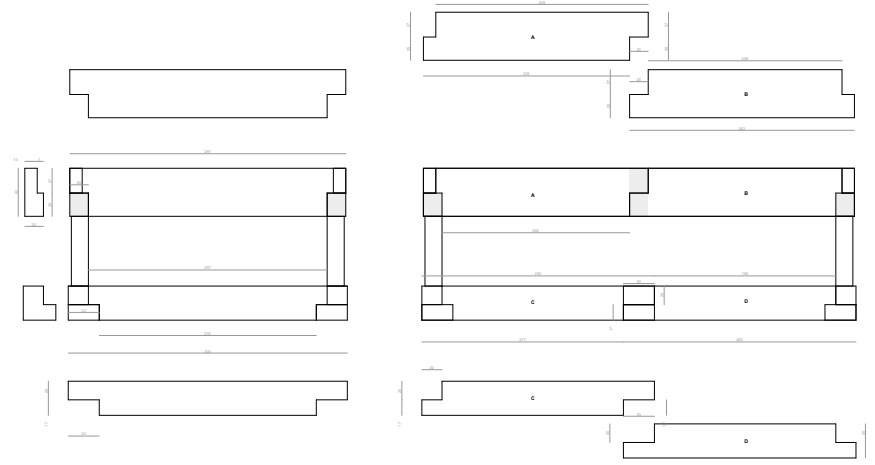
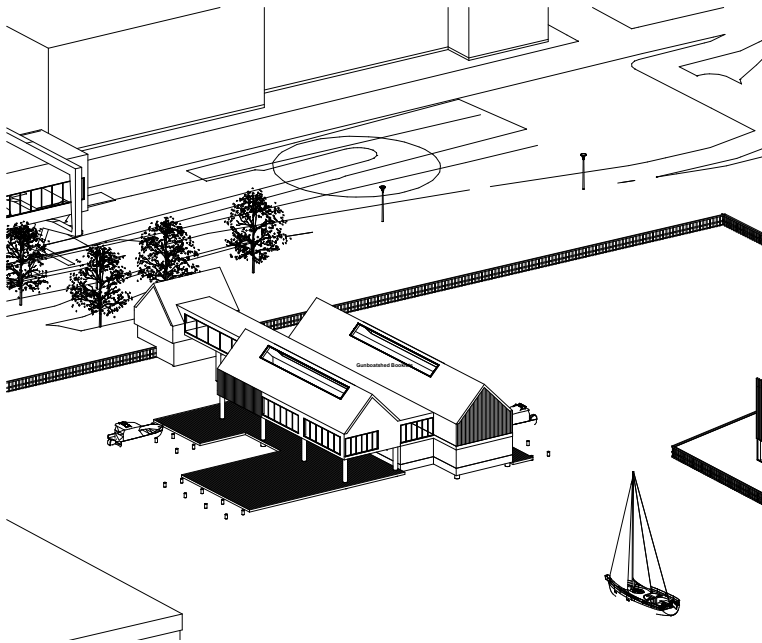
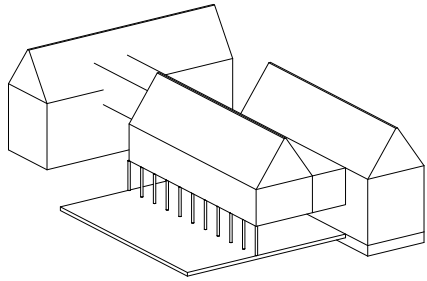


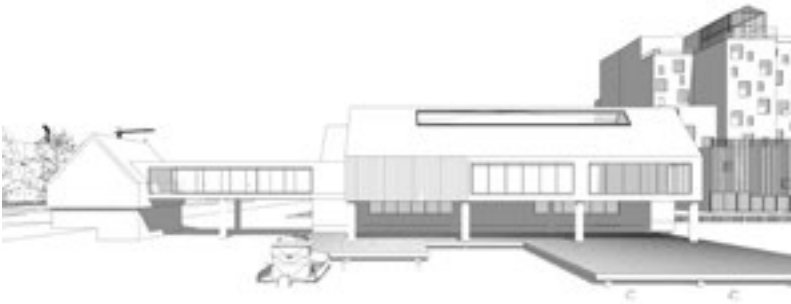
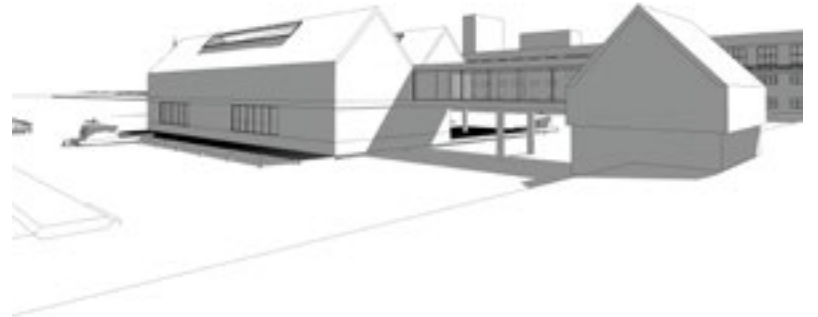


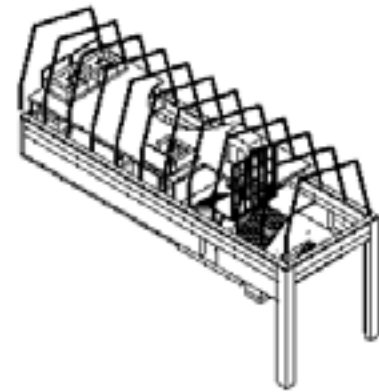
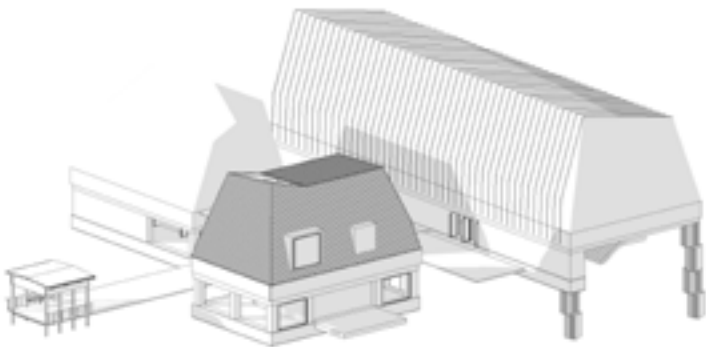
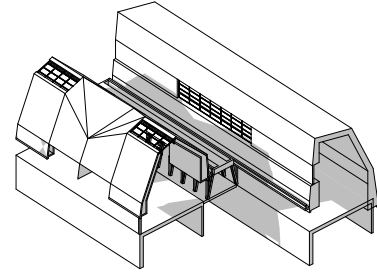
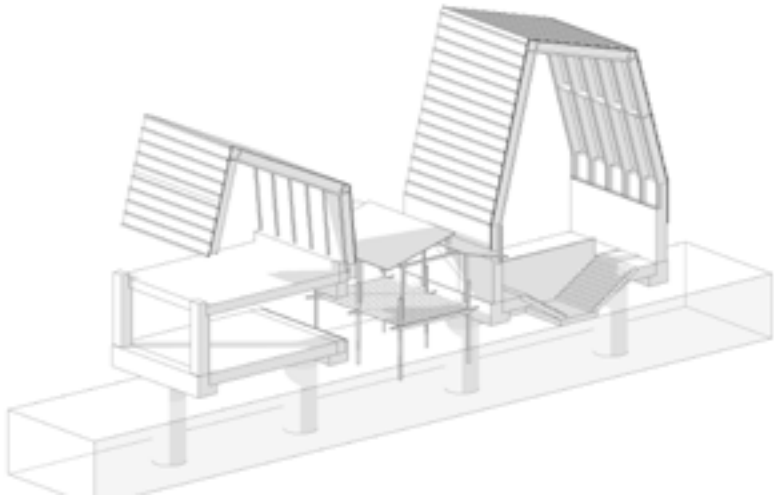


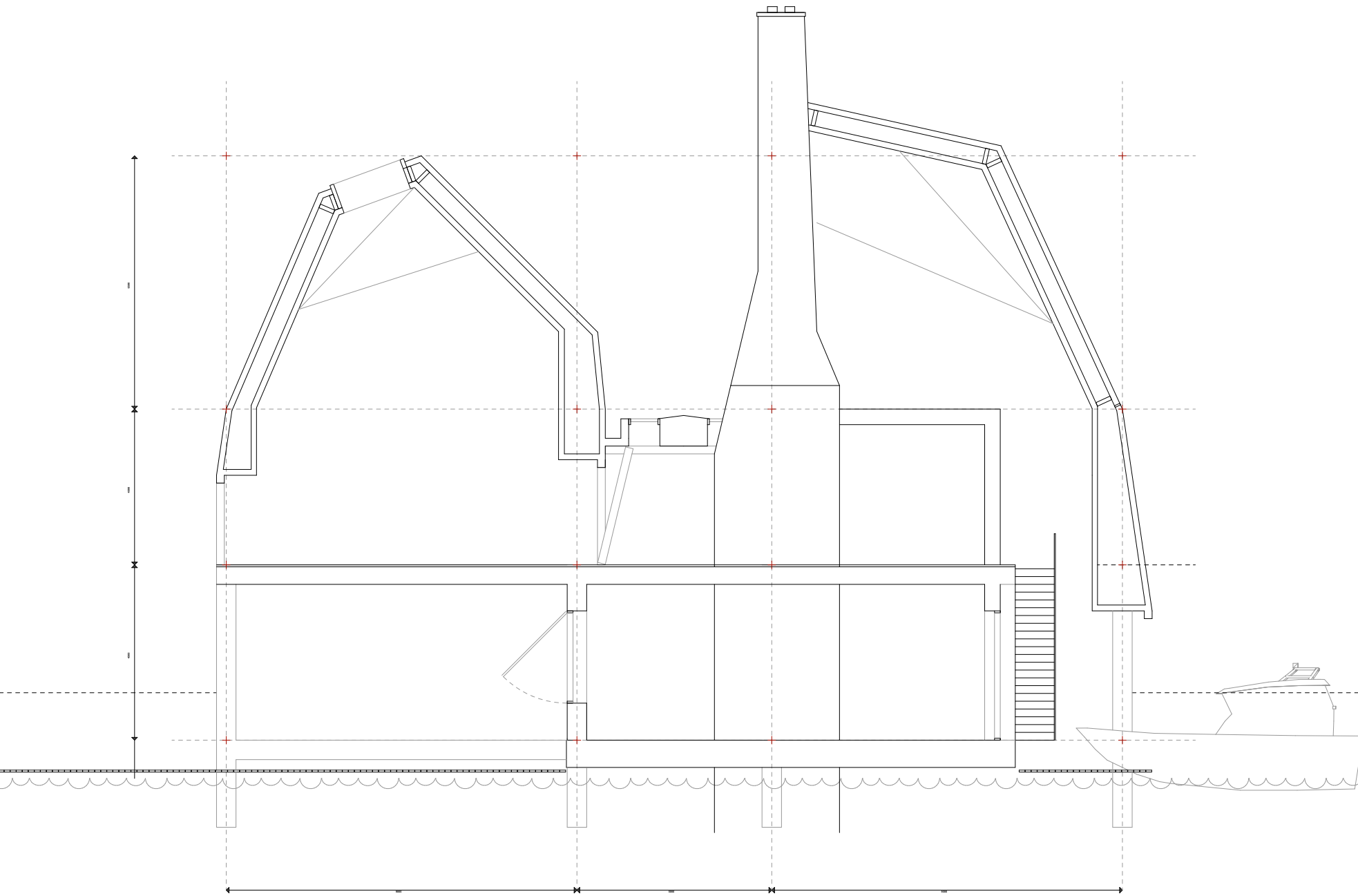


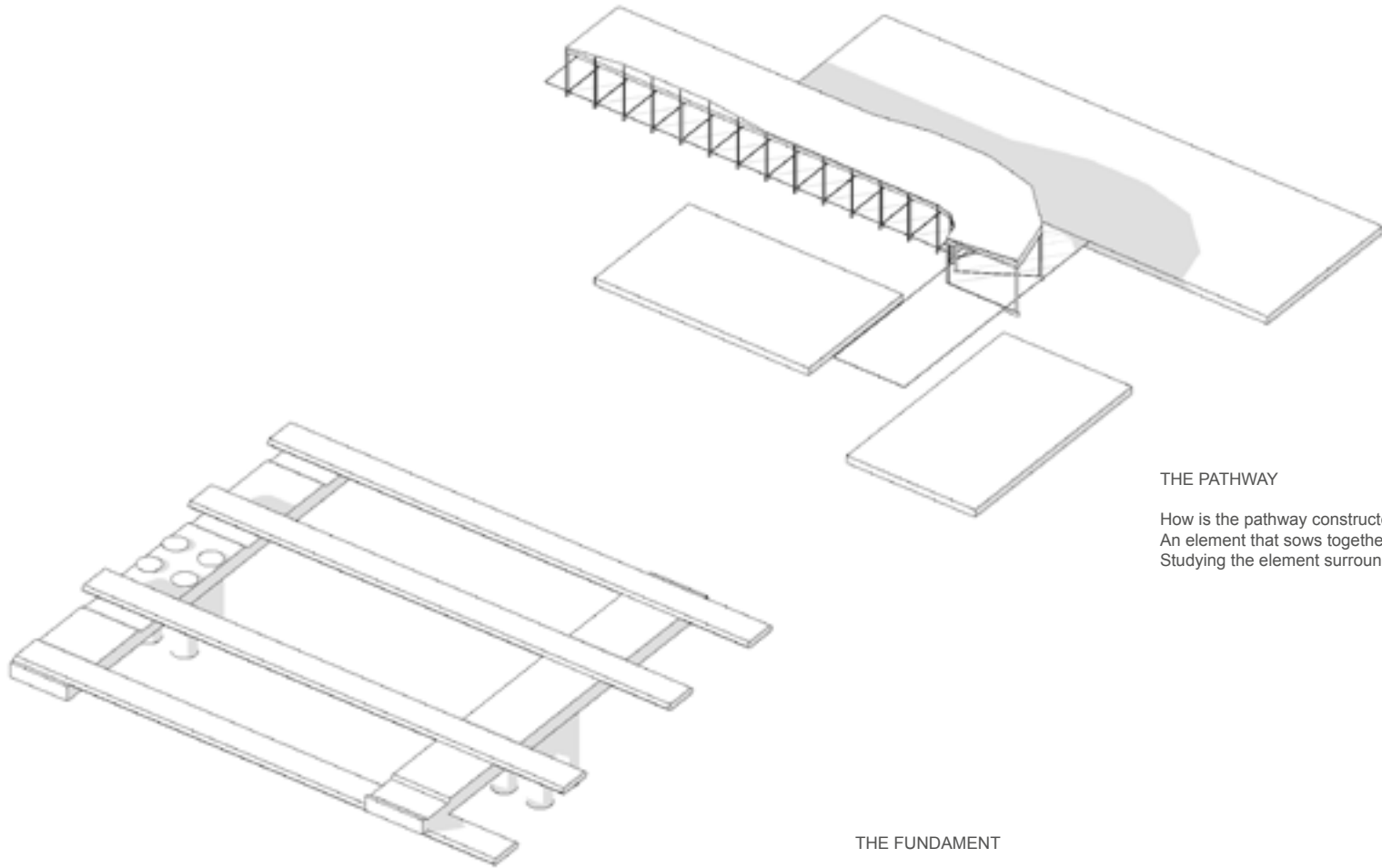










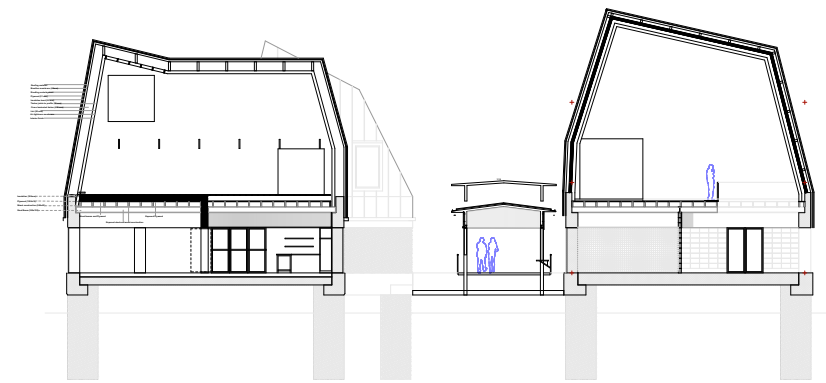
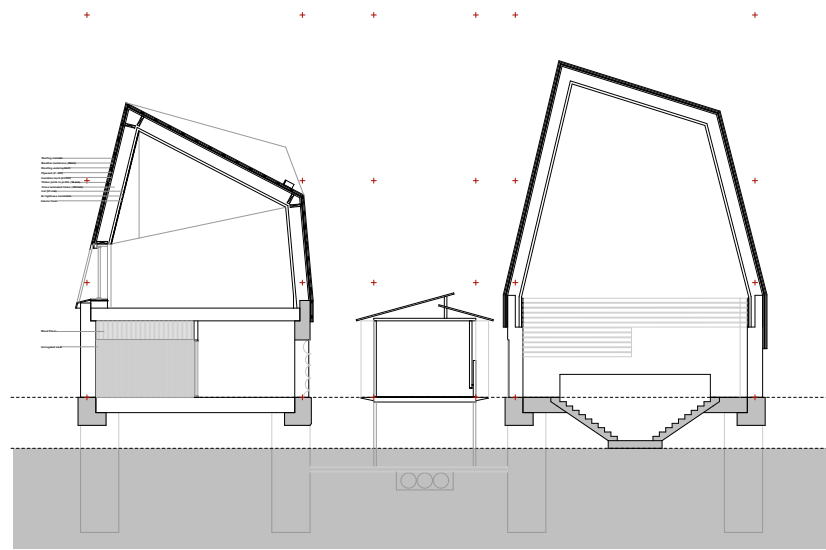
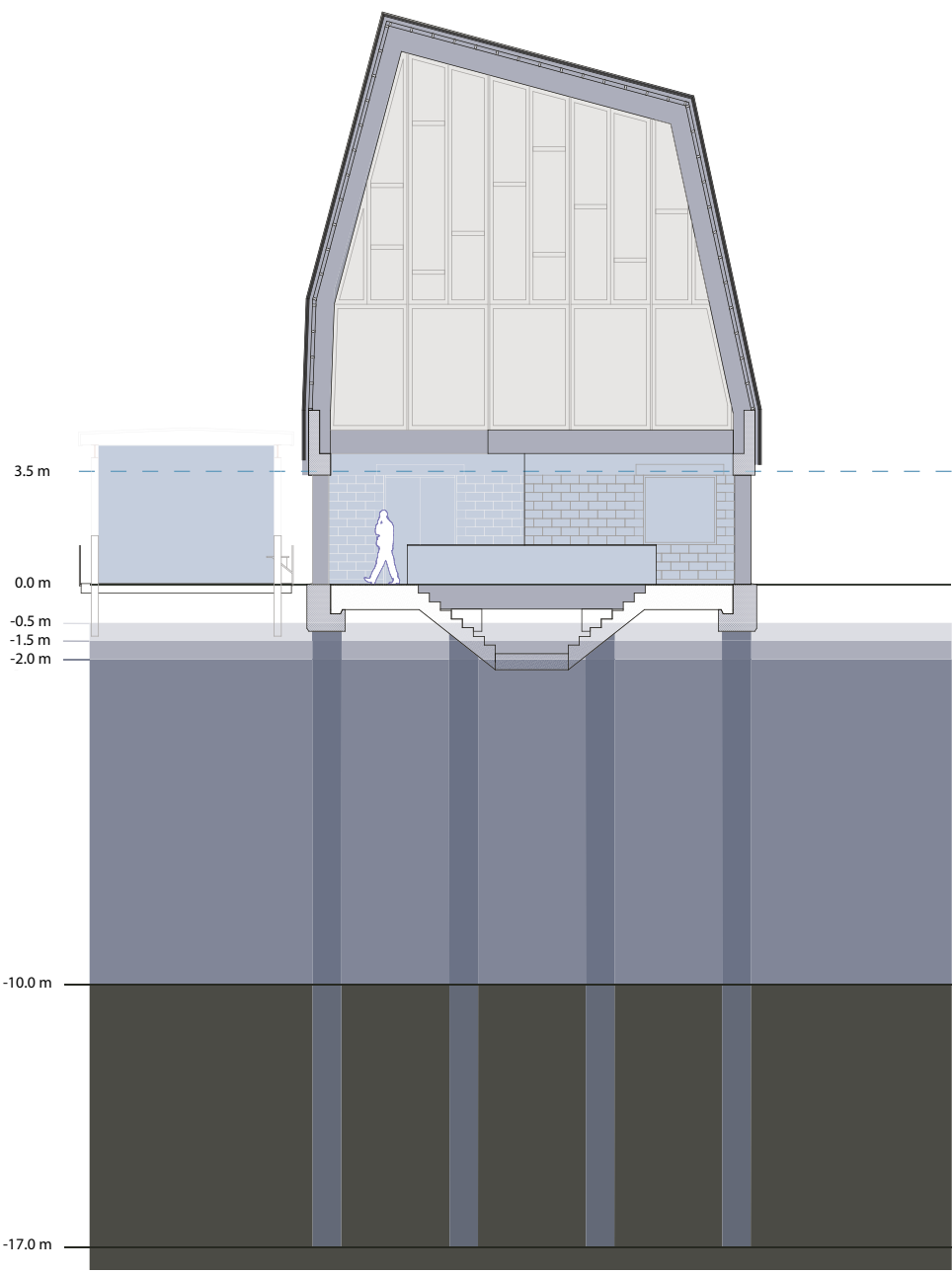


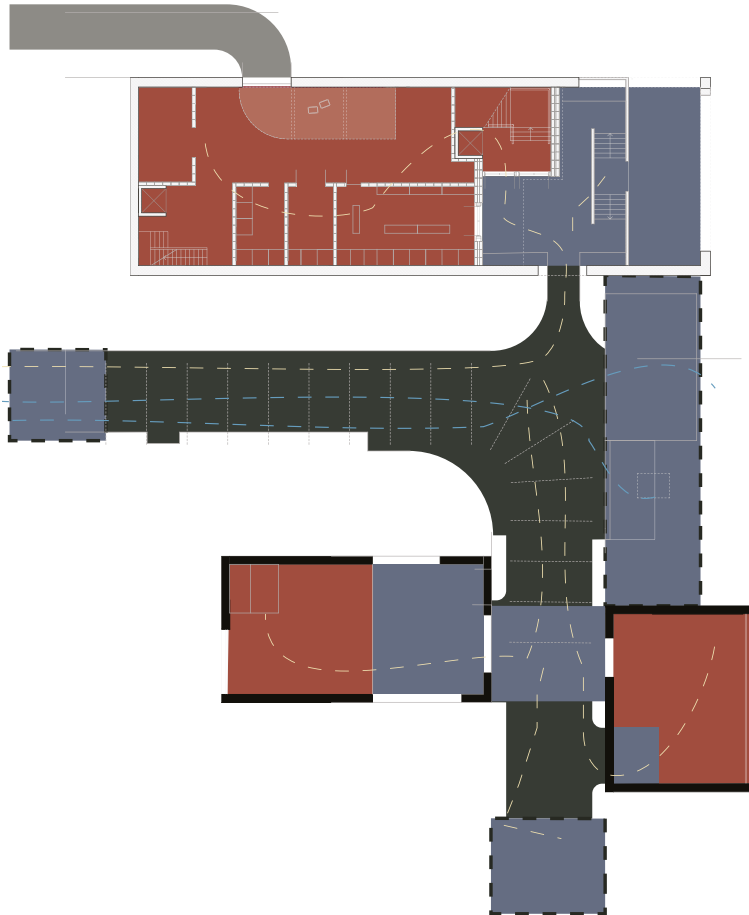
THE PATHWAY

How is the pathway constructed, what is its language?
An element that sows together the rest of the buildings?
Studying the element surrounding the buildings.

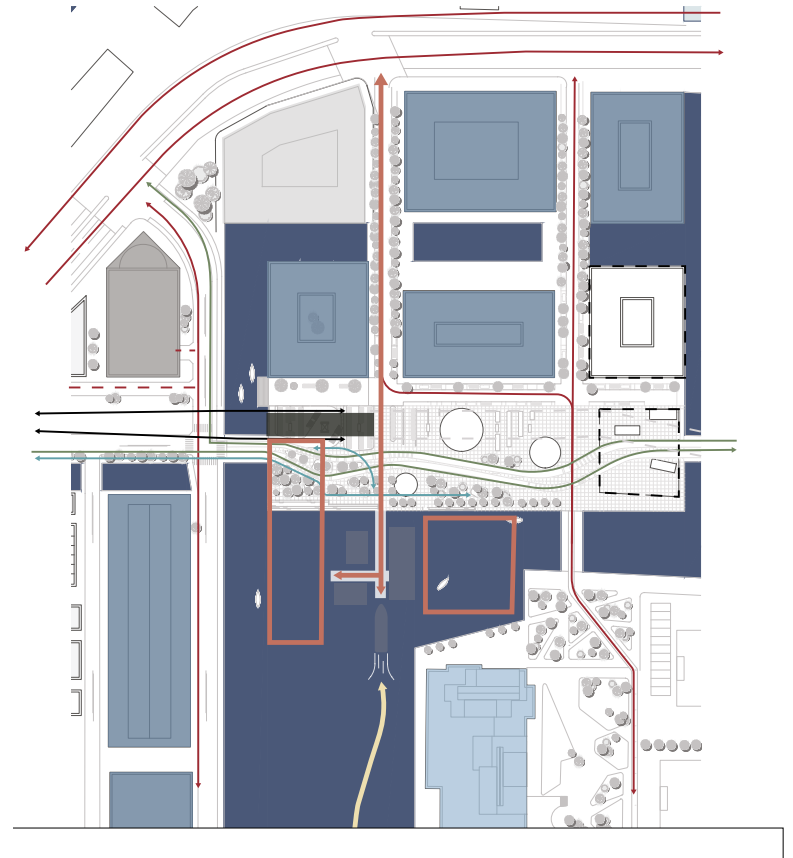
THE FUNDAMENT

How is the fundament sitting in the water, and how is the building constructed onto it?
Does it relate to similar constructions on our site?
Studying the element beneath the buildings.





- isolated
- commuters
- unisolated
- pavillions
- guests



- CARS
- BICYCLES
- PEDESTRIAN
- METRO
- HARBOURBUS
- OFFICES
- PARKING HOUSE
- COURT HOUSE
- METRO
- NEW DEVELOPMENT

