

registration of
tectonic and textural details

frederiksberg and nørrebro
2022



pauline renlef

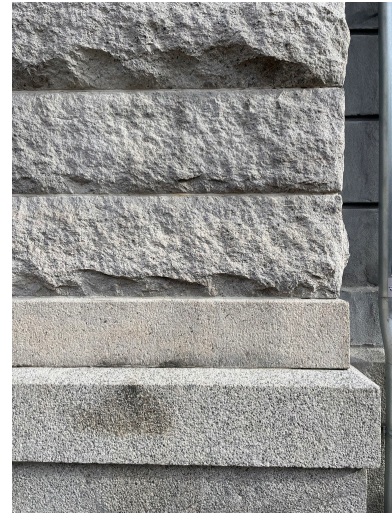
a local refuge

cellar entrance
odinsgade 8



levels of brick

facade
hørsholmsgade 22



layers of granite

window piece
prins constantins vej



emphasized by contrasting bricks

facade
hørsholmsgade



contrasting cornice

facade
thorsgade 61



red bricks and grey plaster

facade base
ågade 98



textured grey plaster

facade
ågade 110



glazed brickwork
at entrance framing

facade
ågade 106



glazed brickwork
at entrance framing

facade
ågade 92



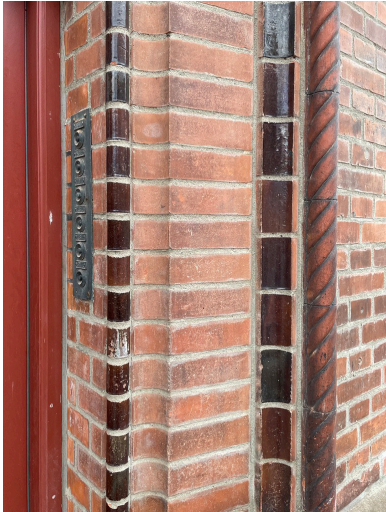
red bricks and grey plaster detail

facade
ågade 138



red bricks and grey base

entrance framing
ågade



shifting levels and glazed details

cellar entrance
hans egedes gade



direction in brickwork

facade
krügersgade



contrasting cornice detail

entrance framing
gilbjergsgade



brick direction

entrance stairs
husumgade



concrete base and tile top

demarcation wall
rolighedsvej



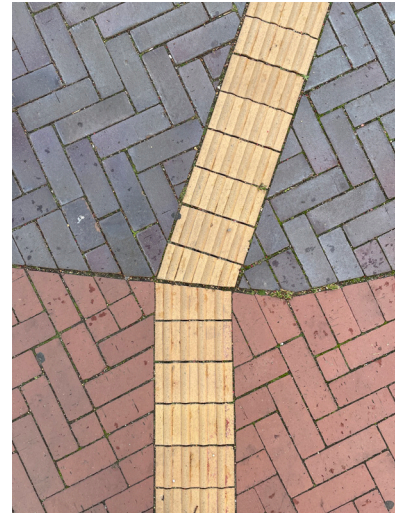
monolithic brick wall

cellar window
ågade 108



brick detail around window

flooring
den røde plads



shift in flooring colours

church entrance
falkoner alle 132



circular levels of bricks
emphasizing entrance

facade
hornbækgade 10



window detail with
red bricks and grey plaster

facade piece
åboulevarden



monolithic detail emphasizing wall opening

entrance framing
åboulevarden



emphasized entrance



Royal
Danish
Academy

Architecture
Design
Conservation