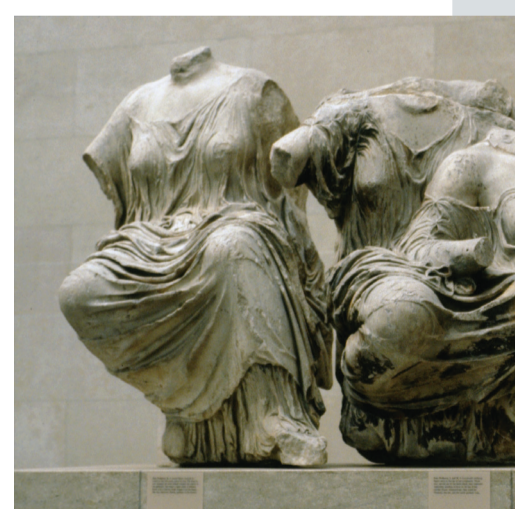
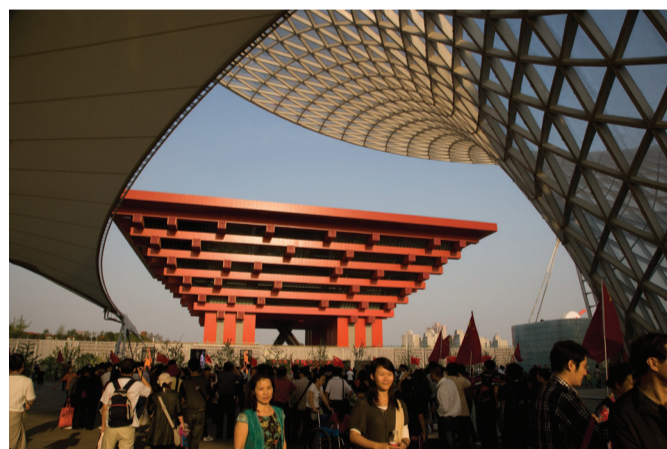
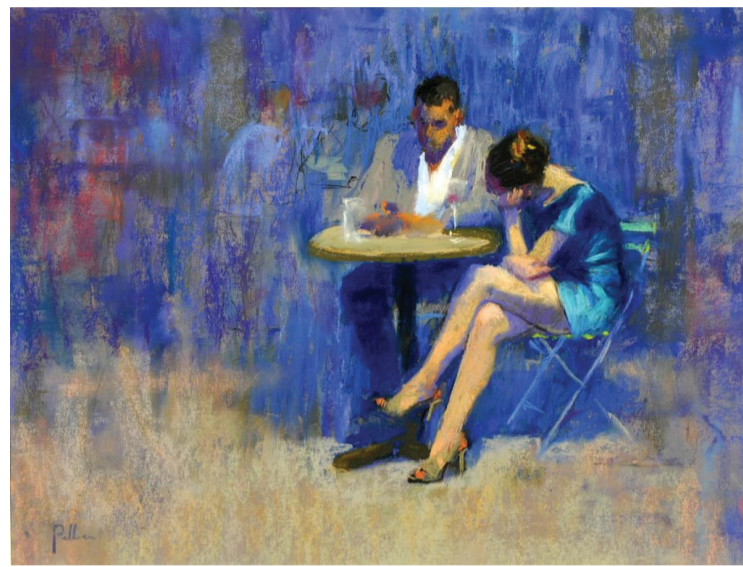


ARTSTOR

A PEERLESS IMAGE RESOURCE. A POWERFUL SET OF TOOLS.

From cave paintings to photojournalism From ancient Rome to modern China From architecture to performance art



More than 2 million images from leading museums, archives, and scholars

Zoom in for close details • Create PowerPoint presentations • Easily export citations • Study with Flashcards using the Artstor app

Available through your institution now at artstor.org

1. LIEVEN VAN LATHEM, THE WAY TO CALVARY, CA. 1471. IMAGE AND ORIGINAL DATA PROVIDED BY THE J. PAUL GETTY MUSEUM. 2. GEORGES VANTONGERLOO, CONSTRUCTION OF VOLUMETRIC INTERRELATIONSHIPS DERIVED FROM THE INSCRIBED SQUARE AND THE SQUARE CIRCUMSCRIBED BY A CIRCLE, 1924. THE SOLOMON R. GUGGENHEIM FOUNDATION. © 2008 ARTISTS RIGHTS SOCIETY (ARS), NEW YORK / PROLITTERIS, ZURICH. 3. JOSEPH PELLER, NIGHT OWLS. © JOSEPH PELLER. 4. RICARDO LEGORRETA, UCSF MISSION BAY COMMUNITY CENTER, OUT DOOR COURTYARD ON FOURTH FLOOR, 2005. UCSF, SAN FRANCISCO. IMAGE AND ORIGINAL DATA PROVIDED BY ART ON FILE, ARTONFILE.COM. 5. ALEX KATZ, LITA, 1964. THE MUSEUM OF MODERN ART GIFT OF LITA HORNICK, THE MUSEUM OF MODERN ART. ART © ALEX KATZ / LICENSED BY VAGA, NEW YORK, NY. THIS WORK OF ART IS PROTECTED BY COPYRIGHT AND/OR RELATED RIGHTS AND MAY NOT BE REPRODUCED IN ANY MANNER, EXCEPT AS PERMITTED UNDER THE ARTSTOR DIGITAL LIBRARY TERMS AND CONDITIONS OF USE, WITHOUT THE PRIOR EXPRESS WRITTEN AUTHORIZATION OF VAGA, 350 FIFTH AVENUE, SUITE 2820, NEW YORK, NY 10118. TEL: 212-736-6666, FAX: 212-736-6767, EMAIL: INFO@VAGARIGHTS.COM FERDINAND HOFMANN, GRAND PIANO, CA. 1790. THE METROPOLITAN MUSEUM OF ART. IMAGE © THE METROPOLITAN MUSEUM OF ART. 6. ABBIE TRAYLER-SMITH, A TUAREG HERDSMAN FIGHTS HIS WAY THROUGH SANDSTORMS AT LAKE BANZENA. IT HAS NOT RAINED FOR MONTHS AND THE AREA IS SUFFERING FROM THE MOST SEVERE DROUGHT TO HIT MALI IN 25 YEARS. 2009. © ABBIE TRAYLER-SMITH / PANOS PICTURES/PANOS PICTURES. PANOS.CO.UK. 7. ROMAN, COLOSSEUM, ROME, ITALY, 70-82 A.D. ART HISTORY SURVEY COLLECTION. 8. CHINESE FOR THE TIBETAN MARKET, SADDLE, 17TH TO 18TH CENTURY. IMAGE © THE METROPOLITAN MUSEUM OF ART. 9. MARION POST WOLCOTT, ERODED FARMLAND, WADESBORO NORTH CAROLINA, 1958. THE PORTLAND ART MUSEUM. 10. FRANCO-CANTABRIAN SCHOOL, ALTAMIRA CAVE, BISON, C. 15,000-10,000 BCE. IMAGE AND ORIGINAL DATA PROVIDED BY SCALA, FLORENCE/ART RESOURCE, N.Y./ARTRES.COM; SCALARCHIVES.COM/© 2006, SCALA, FLORENCE/ART RESOURCE, N.Y. 11. CHINA PAVILION: VIEW THROUGH FUNNEL, STRUCTURE AND CANOPY OF THE PAVILION, 2010. SHANGHAI, CHINA. IMAGE AND ORIGINAL DATA PROVIDED BY ART ON FILE, ARTONFILE.COM. 12. KATSUSHIKA HOKUSAI, EJIRI IN SURUGA PROVINCE, FROM THE SERIES THIRTY-SIX VIEWS OF MOUNT FUJI, 1830/1831. THE PORTLAND ART MUSEUM. 13. UNKNOWN YOKUTS ARTIST, BASKET, CA. 1940. THE PORTLAND ART MUSEUM. 14. AFTER JEAN COUSIN THE YOUNGER, COPY OF A WORLD MAP MADE IN DIEPPE IN 1570, LATE 16TH CENTURY. IMAGE AND ORIGINAL DATA PROVIDED BY RÉUNION DES MUSÉES NATIONAUX / ART RESOURCE, N.Y./ARTRES.COM. 15. BRUCE NAUMAN, HUMAN/NEED/DESIRE, 1983. THE MUSEUM OF MODERN ART. © 2009 BRUCE NAUMAN / ARTISTS RIGHTS SOCIETY (ARS), NEW YORK. 16. GREEK, PARTHENON: E. PEDIMENT. (FIGS. K, L, M) THREE GODDESSES (HESTIA, DIONE, APHRODITE?), CA. 458-432 B.C. ART HISTORY SURVEY COLLECTION